

U.S. PUBLIC LAND SURVEY MONUMENT RECORD

For Public Land Survey Corners in:

WI ADMINISTRATIVE CODE A-E 7.08 REQUIREMENT

T. 3 N., R. 11 E

CORNER CODE INDEX

A	1	2	3	4	5	6	7	8	9	10	11	12	13	14	15	16	17	18	19	20	21	22	23	24	25
B																									
C	6					5					4				3						2			1	
D																									
E																									
F																									
G	1					8					9				10						11			12	
H																									
I																									
J	◆																								
K	13																								
L																									
M																									
N																									
O																									
P	19																								
Q																									
R																									
S																									
T	30																								
U																									
V																									
W																									
X	31																								
Y																									
Z																									

CENTER TWP

ROCK COUNTY WI

IF AVAILABLE
ROCK COUNTY COORDINATES PREFERRED

North _____ Elev. _____

East _____

Hor. Datum _____ Vert. Datum _____

LATITUDE _____ ELLIPS. HT. _____

LONGITUDE _____

GPS (X) _____ TRAVERSE (X) _____

BASED ON THE FOLLOWING CONTROL:

PLACE MONUMENT SYMBOL ◆ AT PROPER LOCATION ON ABOVE INDEX

◆ CORNER MONUMENT ○ WITNESS MONUMENT

(a)

BEARINGS ARE BASED ON:

FIELD BOOK _____ PAGE # _____

SHEET 1 OF 3

SHOW A PLAN VIEW DRAWING DEPICTING THE CORNER MONUMENT AND SURROUNDING PHYSICAL FEATURES, INCLUDING THE EXCAVATION AREA AND DEPTH.

PLANNING & ZONING COMMITTEE ADOPTED THE ABOVE FORM ON 12/2/1982

CORNER CODE 53

ce542

(B) Describe any record evidence, monument evidence, occupational evidence, testimonial evidence or any other material evidence you considered, and whether the monument was found or placed.

1833 HARRISON ORIGINAL SURVEYOR.

WEST BETWEEN 7 & 18

990' LEAVE PRAIRIE & ENTER MARSH

2640 QUARTER SEC COR IN MARSH NO MOUND WATER DEEP.

3300' LEAVE MARSH & ENTER ???

5056.92 WHITE OAK 12

5172.42 INT. WEST BOUNDARY 180.84' NORTH OF POST

WHITE OAK 24 N71E 62.04'; HICKORY 12 S82W 34.32'

1863 LOCKE VOL 1 PG 181 SUBDIVIDED SEC 18. SET STAKE IN MARSH. 2653.2' TO CENTER OF SEC 18 & 2653.2 TO S 1/4 COR SEC 18. DID NOT STATE WHAT HE FOUND NOR HOW HE ESTABLISHED THE CORNER.

1876 RUGER VOL 2 PG 218 & MAP #707 DROVE CEDAR STAKE AT CORNER. 2647.92' VAR 6-24 TO NE COR SEC 18, 1323.96' TO A FOUND HH STONE THAT HE PUT A LARGE HH STONE ON TOP OF IT & SURROUNDED IT WITH SMALLER STONES AT THE N 1/16TH COR OF THE NE 1/4 OF SEC 18, 2562.12' VAR 6-18 TO NW CORNER OF SEC 18, AND 1335.18 TO THE N 1/16TH COR OF THE NW 1/4 OF SEC 18 WHERE HE DROVE STAKE & PUT FLINT STONE ON E & W SIDES. HIS USE OF VAR. INDICATES THAT THE CORNER IS NOT ON A STRAIGHT LINE BETWEEN THE NE AND NW CORNERS OF SEC 18.

CORNER WAS DESTROYED BY CONSTRUCTION OF IRRIGATION DITCH. DID NOT PLACE MONUMENT BECAUSE IT IN THE DITCH. THE COMPUTED N 1/16TH CORNER OF THE NE 1/4 OF SEC 18 IS 1' NORTH OF THE E/W FENCE. DUG AT THE N 1/16TH CORNER AND DID NOT FIND RUGER'S MONUMENT.

C) Was the corner restored through acceptance of (1) an obliterated evidence location, or, (2) a found perpetuated location?

RESTORED CORNER THROUGH ACCEPTANCE OF OBLITERATED EVIDENCE LOCATION. TO CONTROL THE N/S POSITION I PLACED THE CORNER ON LINE BETWEEN THE NE & NW CORNERS OF SEC 18 WHICH IS IN HARMONY WITH THE E/W FENCE AND PRORATED WITH RUGER'S 1876 DISTANCES.

D) Describe any material discrepancy between the location of the corner as restored or reestablished and the location of that corner as previously restored or reestablished by distance and direction. Show the discrepancy on the plan view drawing under (a), above. Show the distances between the corner as previously restored or reestablished and (1) the corner as restored or reestablished, and (2) to at least 4 of the witness monuments shown on the drawing in (a), above.

(E) Was the corner reestablished through lost corner proportionate methods? If so, show the method, including the directions and distances to other public land survey corners used as evidence or used for proportioning the corner location.

I, Donald Barnes, hereby certify that the corner location as identified by the corner code index was determined by me under by direction and control and that this U.S. Public Land Survey Monument Record is correct and complete to the best of my knowledge and belief.

Donald Barnes
seal
OCT 4 1996

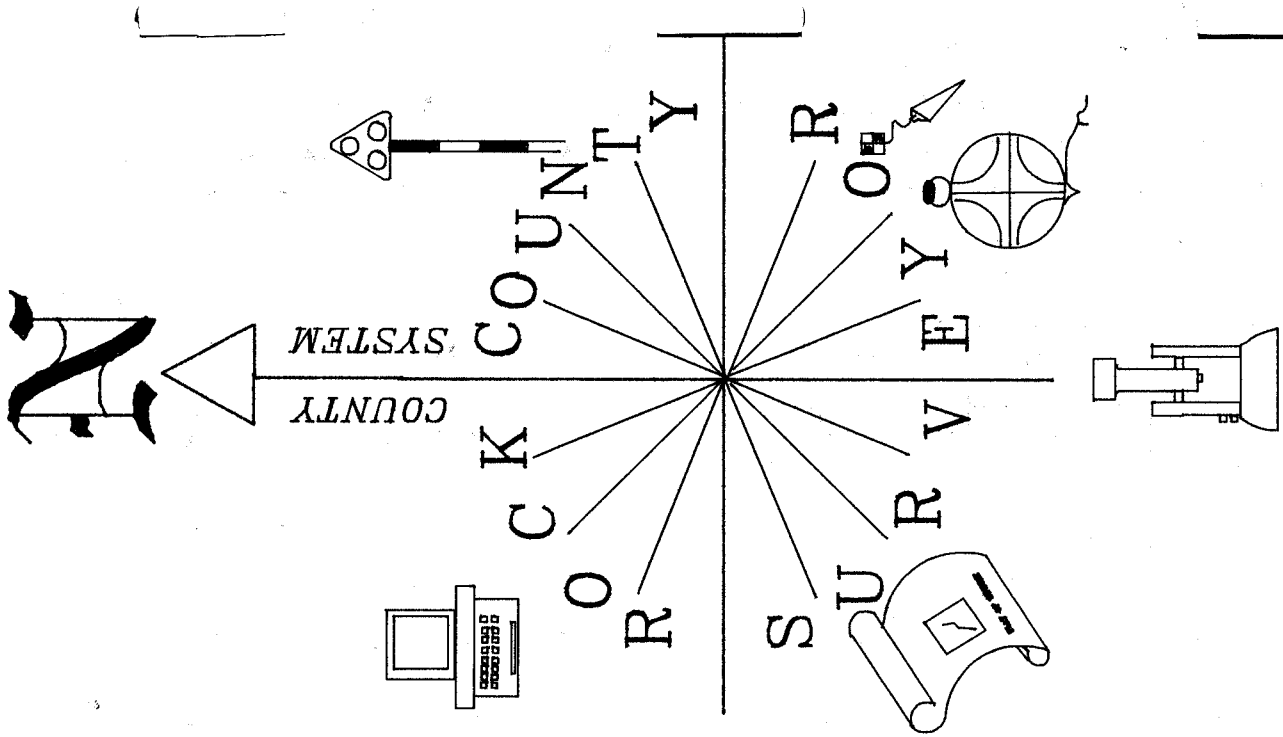
Number of included sheets 1

emboss

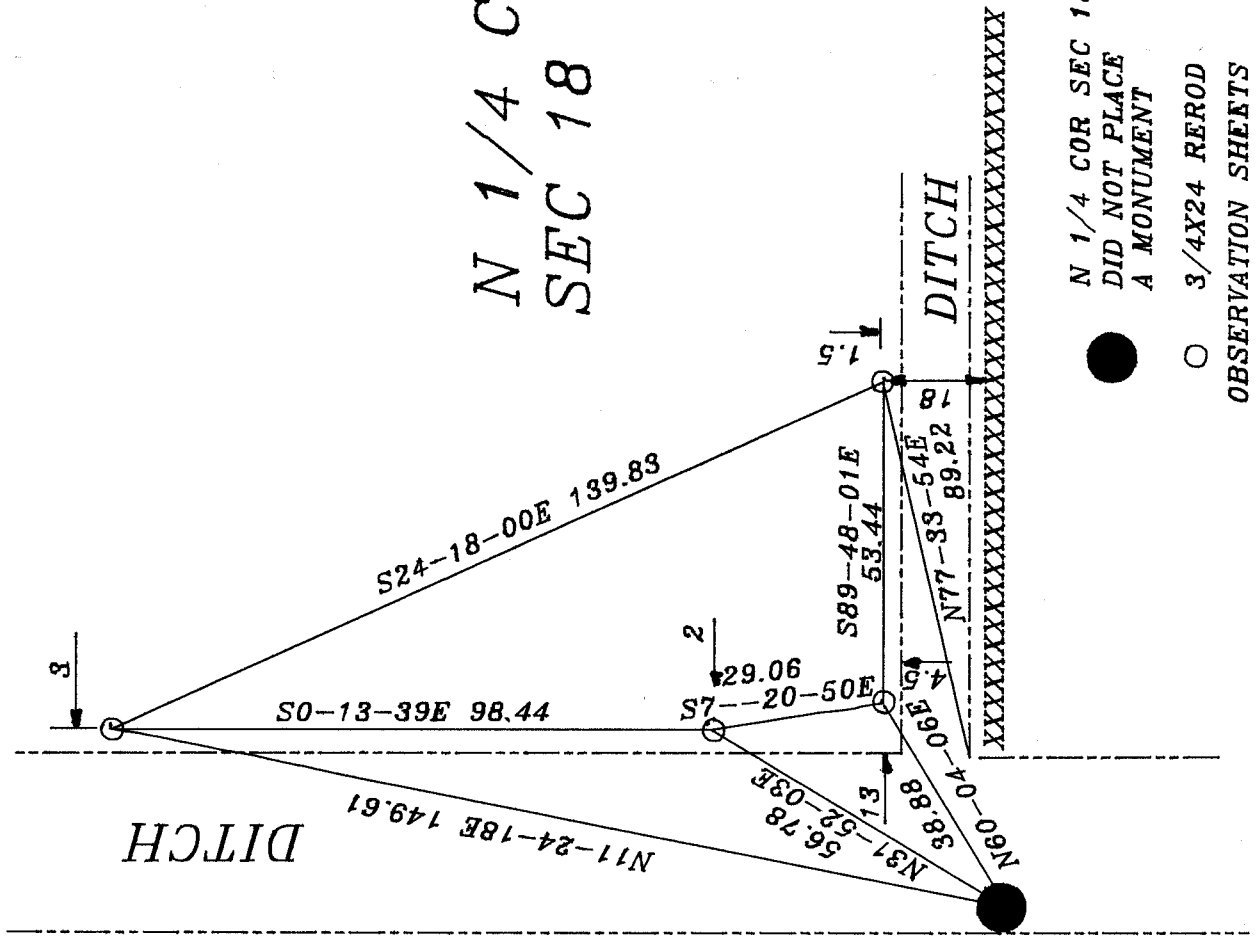
A-E 7.08 REQUIREMENT

CORNER CODE

53



N 1/4 COR
SEC 18



Ronald Barnes
OCT 3, 1996

XXXXXXXXXXXXXXXXXX

9661'2 PO
Barnes

N 1/4
 COR

NW COR

NB9-32-41E 2564.28
 RUGER 1876 2562.12
 1226.94 RUGER 1876 VAR 6-18 1335.18
 HARRISON 1833 2532.42

NB9-32-41E 2650.16
 RUGER 1876 2647.92
 1323.96 RUGER 1876 VAR 6-24 1323.96
 LOCKE 1864 2643.96
 HARRISON 1833 2640

NE COR

FD ALUM

FD ALUM

BARNES 1977 2664.23
 LOCKE 1863 2653.86
 SO-15-38E 2664.22

604.56 604.56 LOCKE 1328.25
 LOCKE 1863 2537.37
 FENCE NB9-29E 2543.9

FENCE SO-11W 2661.6
 LOCKE 1863 2653.2

LOCKE 1864 1323.96
 LOCKE 1863 2656.5

SEC 18

HARRISON 1833 2640
 LOCKE 1863 2655.18
 LOCKE 1863 VAR 7-30
 BARNES 1979 2657.45
 NO-07-52W 2657.54

W 1/4 COR
 FD ALUM

BARNES 1977 2663.30
 LOCKE 1863 2653.86
 SO-16-13E 2663.36

1326.93 LOCKE 1326.93

FARM FIELD
 NO FENCE LINE

1326.6 LOCKE 1326.6
 LOCKE 2653.2
 FENCE SO-13E 2659.9

FENCE NB9-27-30E 2664.5

1334 BARNES 79 1328.1

FD ALUM

E 1/4 COR

HARRISON 1833 2640
 LOCKE 1863 2655.18
 LOCKE 1864 2651.88
 LOCKE 1863 VAR 7-30
 SO-07-40E 2657.44

FD C.I.

SW COR

HARRISON 1833 2521.86
 604.56 604.56 LOCKE 1327.92
 1209.12 LOCKE 1863 1327.92
 LOCKE 1863 VAR 7-50
 LOCKE 1863 2537.04
 S89-24-20W 2541.44

HARRISON 1833 2640
 LOCKE 1864 2652.54
 LOCKE 1863 2655.84
 LOCKE 1863 VAR 7-60
 S89-24-20W 2660.45

FD ALUM

SE COR