

U.S. PUBLIC LAND SURVEY MONUMENT RECORD

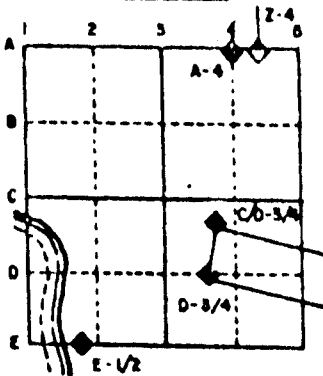
For Public Land Survey Corners in the
T. 3 N., R. 11 E.

CORNER CODE INDEX

	1	2	3	4	5	6	7	8	9	10	11	12	13	14	15	16	17	18	19	20	21	22	23	24	25
A																									
B																									
C	6																								
D		5																							
E			4																						
F				3																					
G					2																				
H																									
I																									
J	7																								
K		8																							
L			9																						
M				10																					
N					11																				
O						12																			
P							13																		
Q								14																	
R									15																
S										16															
T											17														
U												18													
V													19												
W														20											
X															21										
Y																22									
Z																	23								
																		24							
																			25						
																				26					
																					27				
																						28			
																							29		
																								30	
																									31
																									32
																									33
																									34
																									35
																									36

PLACE MONUMENT SYMBOL (◆) AT PROPER LOCATION ON ABOVE INDEX

EXAMPLE



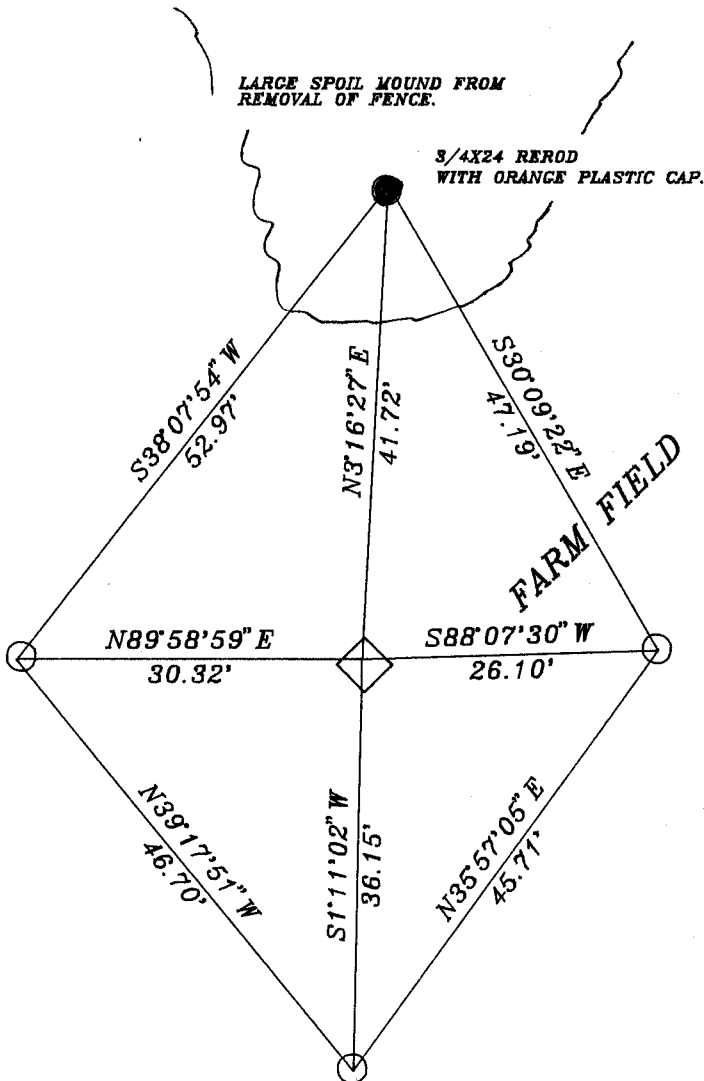
CENTER TWP
ROCK COUNTY WI

IF AVAILABLE
STATE PLANE COORDINATES

North (Y) _____ Eleve. (Z) _____
 East (X) _____ Zone _____
 Hor. Datum _____ Vert. Datum _____

◆ CORNER MONUMENT ○ WITNESS MONUMENT

BEARINGS ARE BASED ON: ASSUMED



FIELD BOOK #2 PG22

- 3/4X24 REROD 18" DEEP WITH MAGNET.
- ◆ FOUND CAST IRON MONUMENT WITH TOP BROKE OFF. MONUMENT IS 18" DEEP. PLACED TOP PART NEXT TO NORTH REROD

MICROFILMED

SHEET _____ OF _____

CORNER CODE: N 13

(B) Describe any record evidence, monument evidence, occupational evidence, testimonial evidence or any other material evidence you considered, and whether the monument was found or placed.

- 1858 CHURCH VOL 1 PG 79 STATES NOTHING ABOUT CORNER. CALLS FOR 2635.38 TO SOUTH QUARTER CORNER OF SECTION 16.
- 1875 RUGER VOL 2 PG 183 FOUND OLD STAKE. DROVE NEW STAKE IN PLACE OF OLD ONE AND SURROUNDED IT WITH 4HH STONES. 2677.62 TO SOUTH QUARTER CORNER OF SECTION 15.
- 1968 BATTERMAN JR. VOL 4 PG 381 FOUND STAKE SURROUNDED BY HARD HEADS. SET 2" PIPE. BELOIT RECORDS, "RESET CAST IRON IN PLACE OF PIPES"
- 196? LEE VOL 5 PG 467 CALLS FOR NAD(27) COORDINATES OF 261,1982.43;2,217,563.71.
- 1978 BARNES VOL 5 PG 474 CALLS FOR 2633.35 TO SOUTH QUARTER OF SECTION 16 AND A LEE DISTANCE OF 2673.99 TO THE E 1/4 CORNER OF SECTION 16.
- 1990 N. LEE MAP #2660 FOUND CAST IRON MONUMENT WITH TOP BROKE OFF. CALLS FOR 2656.12 TO W 1/4 CORNER, 2680.66 TO N 1/4 CORNER OF SECTION 22.

FOUND CAST IRON MONUMENT WITH TOP BROKE OFF.

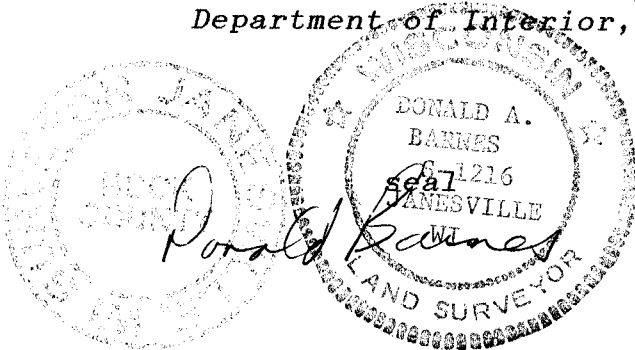
C) Was the corner restored through acceptance of (1) an obliterated evidence location, or, (2) a found perpetuated location?

ACCEPTED FOUND MONUMENT.

D) Describe any material discrepancy between the location of the corner as restored or reestablished and the location of that corner as previously restored or reestablished by distance and direction. Show the discrepancy on the plan view drawing under (a), above. Show the distances between the corner as previously restored or reestablished and (1) the corner as restored or reestablished, and (2) to at least 4 of the witness monuments shown on the drawing in (a), above.

(E) Was the corner reestablished through lost corner proportionate methods? If so, show the method, including the directions and distances to other public land survey corners used as evidence or used for proportioning the corner location.

I, Donald Barnes, hereby certify that the corner points as identified by the corner code index were, in a field survey on, October 25, 1990, established, re-established, monumented, re-monumented, recovered or restored as expressed below and in conformance with the regulations and rules as required in the current manual of survey instructions of the United States Department of Interior, Bureau of Land Management.



AFFIX YOUR LAND SURVEYOR SEAL

COUNTY SURVEYOR FILING DATA

Date of computer entry _____

Date microfilmed _____

Number of included sheets _____
CORNER CODE

N13