

# U.S. PUBLIC LAND SURVEY MONUMENT RECORD

For Public Land Survey Corners in:

WI ADMINISTRATIVE CODE A-E 7.08 REQUIREMENT

T. 3 N., R. 11 E

### CORNER CODE INDEX

A	2	3	4	5	6	7	8	9	10	11	12	13	14	15	16	17	18	19	20	21	22	23	24	25
B	6					5					A			3							2			1
C																								
D																								
E																								
F																								
G	1																							
H																								
I																								
J																								
K																								
L	18																							
M																								
N																								
O	19																							
P																								
Q																								
R																								
S																								
T	30																							
U																								
V																								
W																								
X	31																							
Y																								
Z																								

CENTER TWP

ROCK COUNTY WI

IF AVAILABLE  
ROCK COUNTY COORDINATES PREFERRED

North \_\_\_\_\_ Elev. \_\_\_\_\_

East \_\_\_\_\_

Hor. Datum \_\_\_\_\_ Vert. Datum \_\_\_\_\_

LATITUDE \_\_\_\_\_ ELLIPS. HT. \_\_\_\_\_

LONGITUDE \_\_\_\_\_

GPS (X) \_\_\_\_\_ TRAVERSE (X) \_\_\_\_\_

BASED ON THE FOLLOWING CONTROL:

PLACE MONUMENT SYMBOL  AT PROPER LOCATION ON ABOVE INDEX

CORNER MONUMENT

WITNESS MONUMENT

BEARINGS ARE BASED ON:

FIELD BOOK \_\_\_\_\_ PAGE # \_\_\_\_\_

SHEET 1 OF 3

SHOW A PLAN VIEW DRAWING DEPICTING THE CORNER MONUMENT AND SURROUNDING PHYSICAL FEATURES, INCLUDING THE EXCAVATION AREA AND DEPTH.

PLANNING & ZONING COMMITTEE ADOPTED THE ABOVE FORM ON 12/2/1982

CORNER CODE N3

CE562

(B) Describe any record evidence, monument evidence, occupational evidence, testimonial evidence or any other material evidence you considered, and whether the monument was found or placed.

1833 HARRISON ORIGINAL SURVEYOR 2640 TO SE COR & 2521.86 TO SW COR.  
1863 LOCKE VOL 1 PG 180 SET LIMESTONE 14X7X6. 2537.04 VAR 7-50 TO SW COR SEC 18, 2655.84 VAR 7-50 TO SE COR SEC 18, 1327.92 TO S 1/16TH COR OF SW 1/4 SEC 18 WHERE HE SET SANDSTONE 14X8X9, 2666.4 TO CENTER OF SEC 19, & 5332.8 TO S 1/4 COR SEC 19.  
1863 LOCKE VOL 1 PG 181 SET LIMESTONE 14X7X6. 2653.2 TO CENTER OF SEC 18, 5306.4 TO N 1/4 COR SEC 18, 2537.04 TO SW COR SEC 18.  
1976 BARNES VOL 5 PG 230 SAME INFORMATION AS IN VOL 5 PG 559.  
1979 BARNES VOL 5 PG 559 CALLS FOR 1332 TO N/S FENCE AT S 1/16TH OF SE 1/4 SEC 18 & 2664 TO SE COR SEC 18.

DUG LARGE HOLE 5.5' DEEP AS SHOWN ON THE DRAWING. ABOUT 3-4' DEEP FOUND PIECE OF GLASS AND PIECE OF METAL. HOLE VOID OF STONES AND OTHER MATERIALS. LOCKE'S 1863 INDICATES THAT HE ESTABLISHED THE CORNER AT SINGLE PROPORTIONATE DISTANCE WITH HARRISON'S ORIGINAL RECORD DISTANCE. ESTABLISHED CORNER ON LINE WITH SW & SE CORNERS OF SEC 18 AT PROPORTIONATE DISTANCE WITH LOCKE'S RECORD DISTANCES. THIS WAS IN HARMONY WITH OCCUPATION LINES AS SHOWN IN 1976 BY ME AND THE FENCE INTERSECTION AT THE CENTER OF SECTION 18.

C) Was the corner restored through acceptance of (1) an obliterated evidence location, or, (2) a found perpetuated location?  
RESTORED CORNER THROUGH ACCEPTANCE OF OBLITERATED EVIDENCE LOCATION FROM LOCKE'S SURVEY WHICH WAS SUPPORTED BY OCCUPATION LINES.

D) Describe any material discrepancy between the location of the corner as restored or reestablished and the location of that corner as previously restored or reestablished by distance and direction. Show the discrepancy on the plan view drawing under (a), above. Show the distances between the corner as previously restored or reestablished and (1) the corner as restored or reestablished, and (2) to at least 4 of the witness monuments shown on the drawing in (a), above.

(E) Was the corner reestablished through lost corner proportionate methods? If so, show the method, including the directions and distances to other public land survey corners used as evidence or used for proportioning the corner location.

I, Donald Barnes, hereby certify that the corner location as identified by the corner code index was determined by me under by direction and control and that this U.S. Public Land Survey Monument Record is correct and complete to the best of my knowledge and belief.

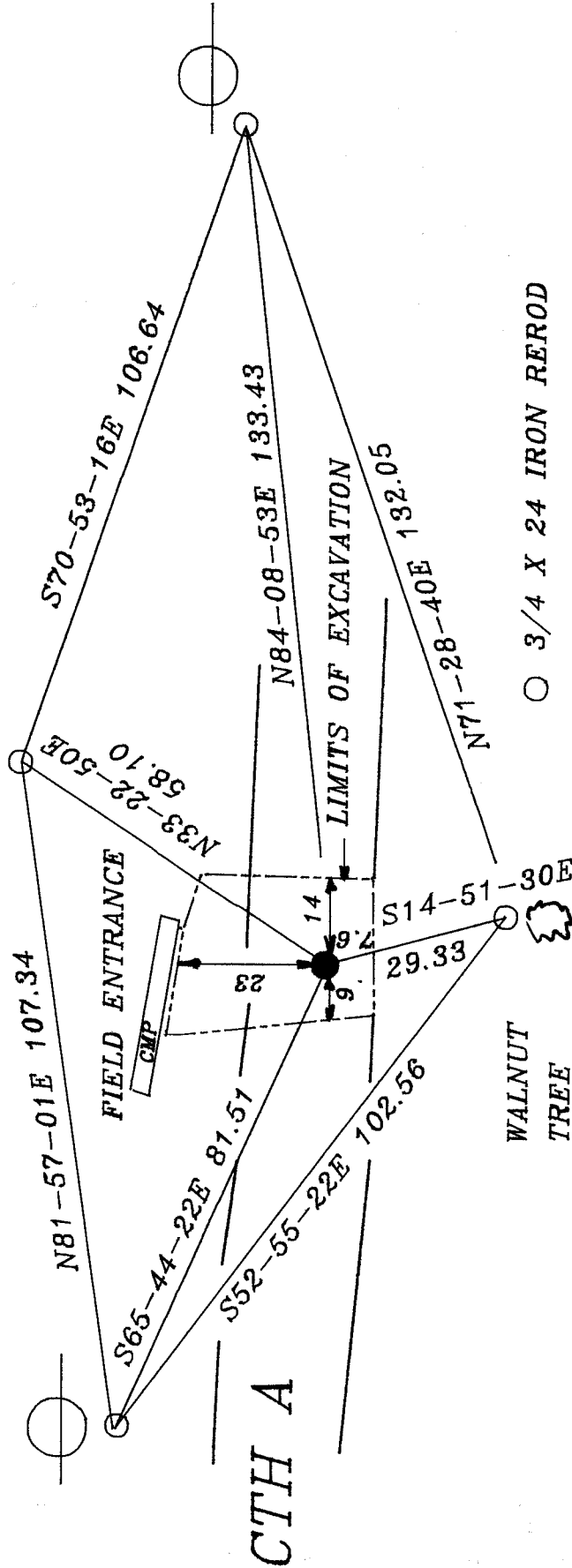
*Donald Barnes*  
OCT 3, 1996  
emboss

Number of included sheets 1

N 3

Donald Barnes  
Oct 3, 1996

S 1/4 COR  
SEC 18



○ 3/4 X 24 IRON REROD

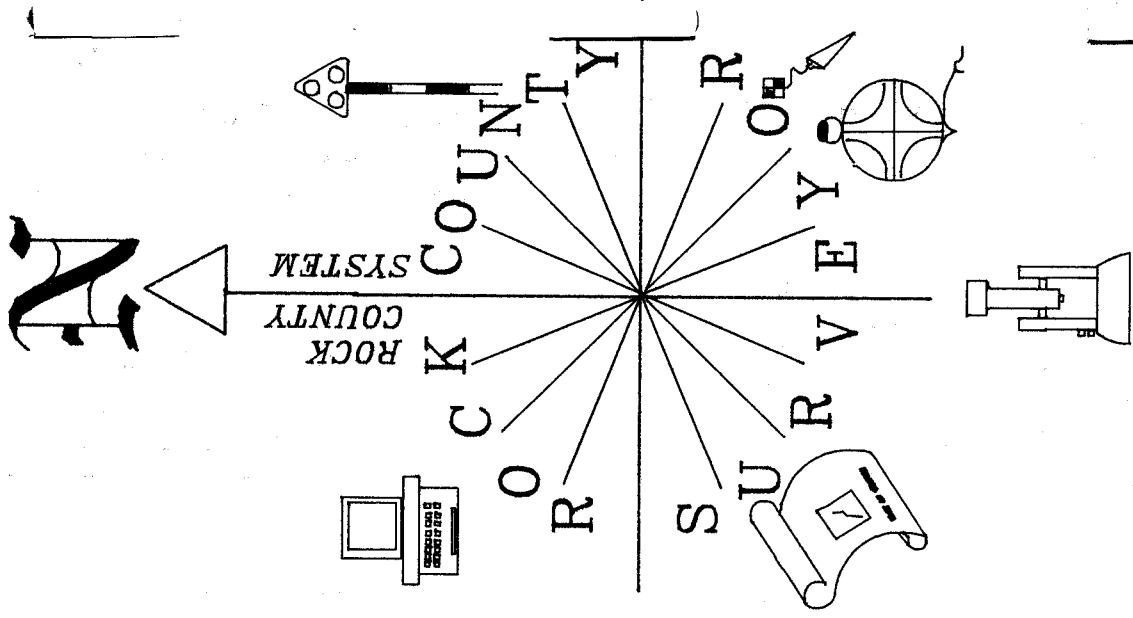
● S 1/4 COR  
SEC 18

OBSERVATION SHEETS

BRUSH LINE

WALNUT  
TREE

CTH A



9661 C 120  
*Donald Barnes*  
 1996

N 1/4  
 COR

NW COR

FD ALUM

N89-32-41E 2664.28  
 RUGER 1878 2562.12  
 1226.94 RUGER 1876 VAR 6-18 1335.18  
 HARRISON 1833 2532.42

1323.96 RUGER 1876 VAR 6-24 1323.96  
 LOCKE 1864 2643.96  
 HARRISON 1833 2640

NE COR

FD ALUM

HARRISON 1833 2640  
 LOCKE 1863 2655.18  
 LOCKE 1863 VAR 7-30  
 BARNES 1979 2657.45  
 NO-07-52W 2657.54

W 1/4 COR

FD ALUM

BARNES 1977 2664.23  
 LOCKE 1863 2653.86  
 SO-15-38E 2664.22

604.56 604.56 LOCKE 1328.25  
 LOCKE 1863 2537.37  
 FENCE N89-29E 2543.9

FENCE SO-11W 2661.6  
 LOCKE 1863 2653.2

SEC 18

LOCKE 1864 1323.96  
 LOCKE 1863 2656.5

FD ALUM

E 1/4 COR

BARNES 1977 2663.30  
 LOCKE 1863 2653.86  
 SO-16-13E 2663.36

1326.93 LOCKE 1326.93

FARM FIELD  
 NO FENCE LINE

1326.6 LOCKE 1326.6  
 LOCKE 2653.2  
 FENCE SO-13E 2659.9

1334 BARNES 79 1328.1

1326.27 LOCKE 1864 1326.27  
 1332 BARNES 1976 1332

HARRISON 1833 2640  
 LOCKE 1863 2655.18  
 LOCKE 1864 2651.88  
 LOCKE 1863 VAR 7-30  
 SO-07-40E 2657.44

FD C.I.

SW COR

HARRISON 1833 2521.86  
 604.56 604.56 LOCKE 1327.92  
 1209.12 LOCKE 1863 1327.92  
 LOCKE 1863 VAR 7-50  
 LOCKE 1863 2537.04  
 S89-24-20W 2541.44

HARRISON 1833 2640

LOCKE 1864 2652.54  
 LOCKE 1863 2655.84  
 LOCKE 1863 VAR 7-50  
 S89-24-20W 2660.45

FD ALUM

SE COR