

PLAT AND RECORD

233

Of a Survey on Section 33 T 1 N R 11 E of the 4 P. M. in NEWARK Township

Rock County, Wisconsin, made AUGUST the 24 1965

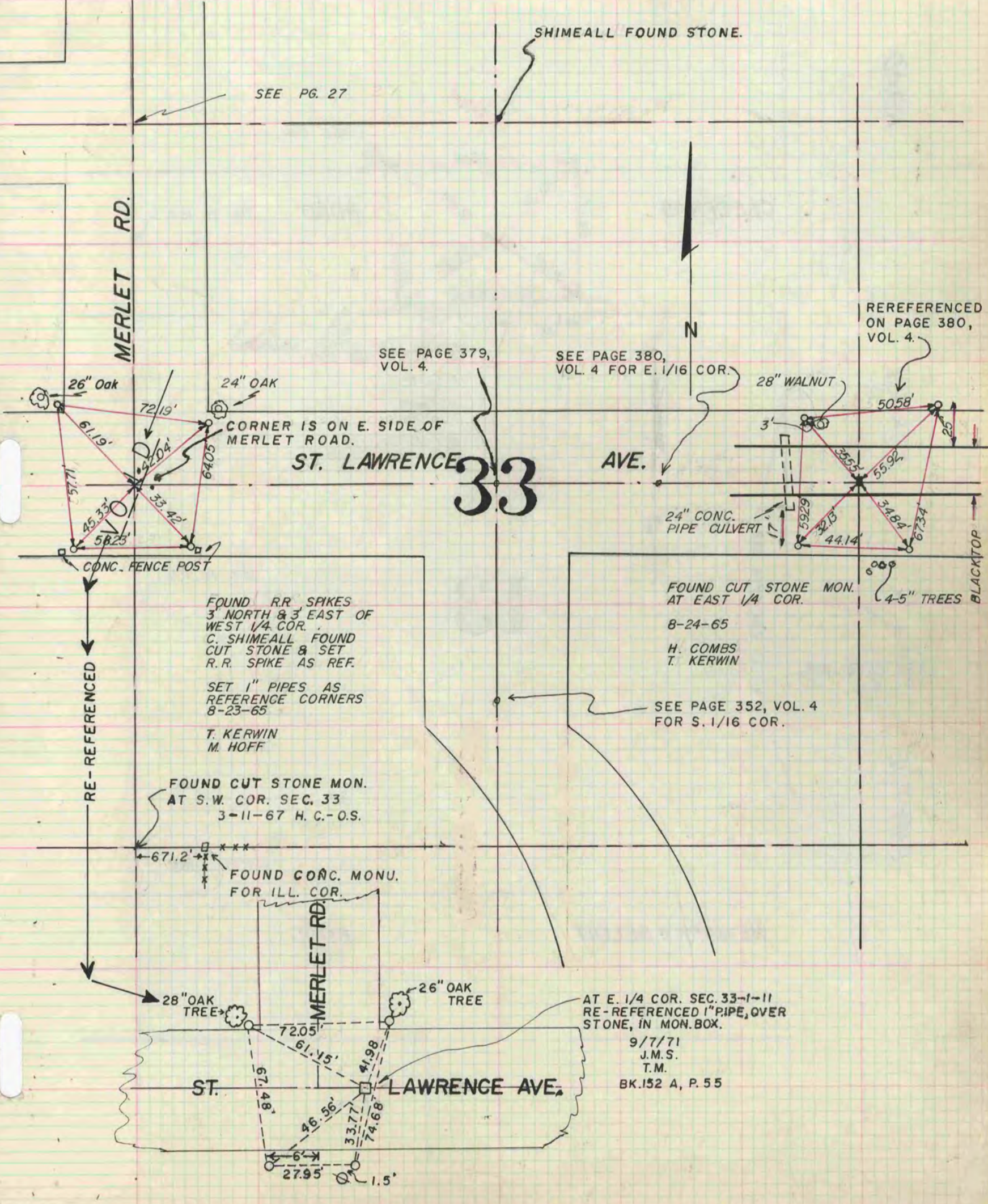
I hereby certify that the following is a correct record of said survey as made by me.

COUNTY BUILDING
IN CITY OF BELOIT

Robert E. ...

County Surveyor.

THE GEO. B. BARBARO COMPANY, ST. LOUIS



SEE PG. 27

SEE PAGE 379, VOL. 4.

SEE PAGE 380, VOL. 4 FOR E. 1/16 COR.

RE-REFERENCED ON PAGE 380, VOL. 4.

CORNER IS ON E. SIDE OF MERLET ROAD.

ST. LAWRENCE 33 AVE.

24" CONC. PIPE CULVERT

FOUND CUT STONE MON. AT EAST 1/4 COR.

8-24-65

H. COMBS
T. KERWIN

SEE PAGE 352, VOL. 4 FOR S. 1/16 COR.

RE-REFERENCED

FOUND CUT STONE MON. AT S.W. COR. SEC. 33
3-11-67 H. C.-O.S.

FOUND CONC. MONU. FOR ILL. COR.

AT E. 1/4 COR. SEC. 33-1-11 RE-REFERENCED 1" PIPE, OVER STONE, IN MON. BOX.

9/7/71
J.M.S.
T.M.
BK.152 A, P. 55

ST. LAWRENCE AVE.

MERLET RD.

MERLET RD.

26" OAK TREE

28" OAK TREE

BLACKTOP