

# PLAT AND RECORD

Of a Survey on Section 26 T 4 R 11 E. of the 4 P. M. in Porter Township

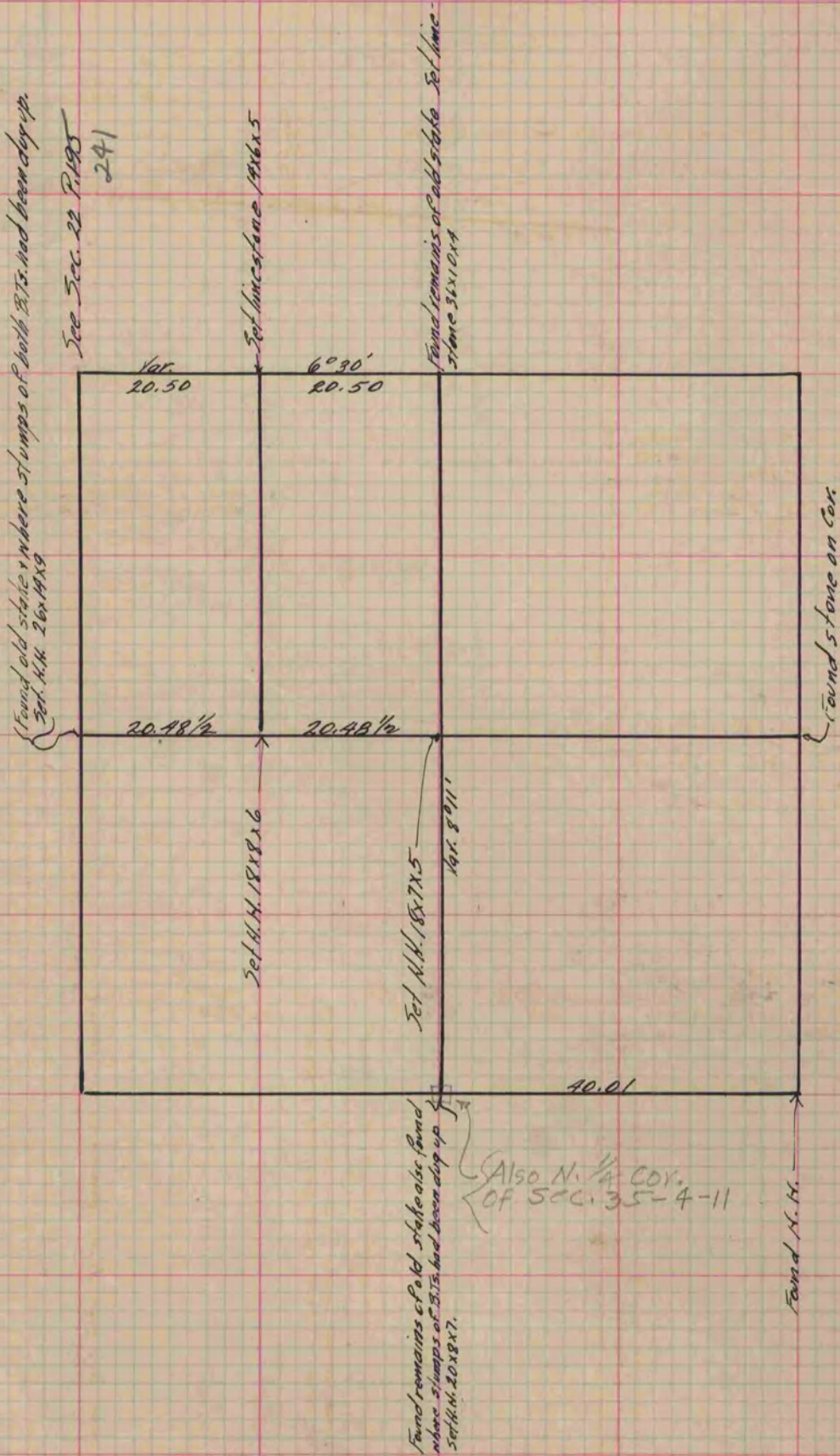
Rock County, Wisconsin, made April the 10 1878

I hereby certify that the following is a correct record of said survey as made by me.

COUNTY BUILDING  
IN CITY OF BELOIT

(Signed) Edward Roger  
RAB

County Surveyor.



Copied from P. 196 Vol. 2 County Surveyor's Record.