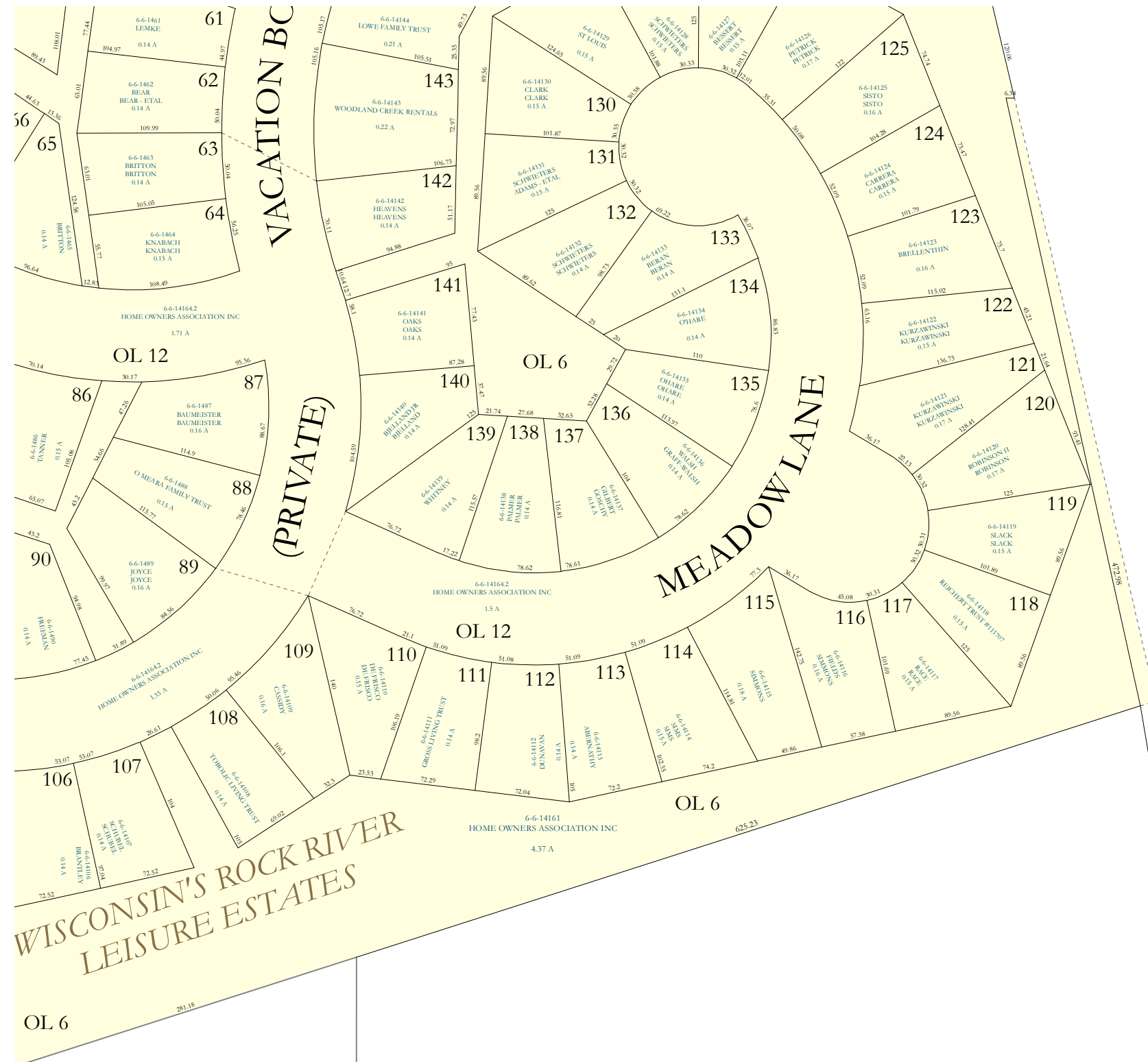


12 SENW



12 N1/4W

1

6-6-112-10  
WISCONSIN'S ROCK RIVER LEISURE ESTATES HOME OWNERS ASSOCIATION INC  
11.99 A

1992.68

6-6-112-11  
ARTHUR T & KAREN M DONALDSON REVOCABLE TRUST  
36.88 A

PT GL 4

6-6-112  
SHARON DEEGAN  
18.22 A

6-6-113  
WENDELL A & NANCY L LITZ REVOCABLE TRUST

96.58 A

1

C

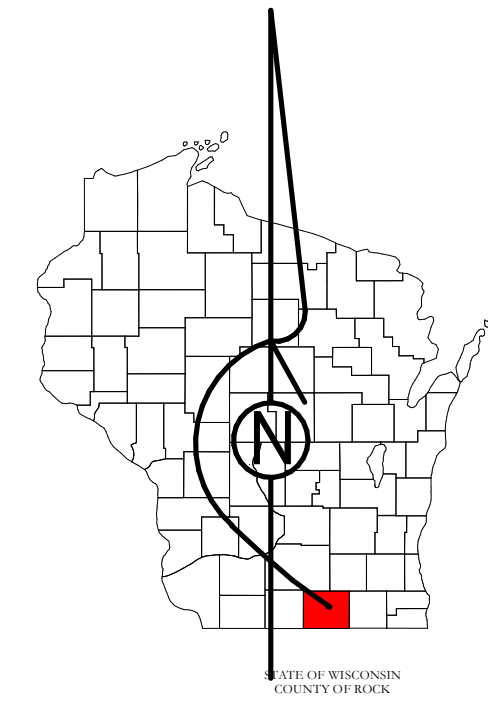
1114.19

# Property Division Map

Town of  
Fulton

T. 4 N. - R. 12 E.

Section 12 NESW



PREPARED BY

REAL PROPERTY DESCRIPTION  
DEPARTMENT

USING

ROCK COUNTY  
GEOGRAPHIC INFORMATION SYSTEM

DUPLICATION OF THIS MAP PROHIBITED  
WITHOUT THE WRITTEN CONSENT OF THE  
REAL PROPERTY DESCRIPTION DEPARTMENT.

THIS MAP WAS PREPARED PURSUANT  
TO SECTION 70.09 WIS. STATS.  
USING PUBLIC RECORDS. IT IS NOT INTENDED  
TO BE A SUBSTITUTE FOR AN  
ACTUAL FIELD SURVEY  
AND IS ADVISORY ONLY.

DISTANCES SHOWN ON THIS  
MAP WERE PRODUCED BY  
THE GIS SYSTEM AND ARE  
FOR REFERENCE ONLY.  
SEE DOCUMENT OF RECORD  
FOR ACTUAL DISTANCE.

0 12.5 25 50 75 100  
Feet

- Gap
- Overlap
- City of Edgerton
- CSM
- CSMHYDRO
- CSMLOT
- CSMLOTHYDRO
- MFL
- dam
- easement
- hydro
- lots
- parcels
- parcelshydro
- roadrw

See Pages

January 1, 2019

12 NESW