

Paper weight-110# (minimum)

Black nonfading ink required

U.S. PUBLIC LAND SURVEY MONUMENT RECORD

For Public Land Survey Corners In:

WI ADMINISTRATIVE CODE A-E 7.08 REQUIREMENT

T. 3N. R. 11E. 4th P.M.

REV 10/23/2004

USMONREC.DWG

CORNER CODE INDEX

CENTER TWP

ROCK COUNTY WI

IF AVAILABLE

ROCK COUNTY COORDINATES PREFERRED

A	1	2	3	4	5	6	7	8	9	10	11	12	13	14	15	16	17	18	19	20	21	22	23	24	25	A	
B		6				5				4					3					2						1	B
C																											C
D																											D
E																											E
F																											F
G																											G
H																											H
J																											J
K																											K
L																											L
M																											M
N																											N
O																											O
P																											P
Q																											Q
R																											R
S																											S
T																											T
U																											U
V																											V
W																											W
X																											X
Y																											Y
Z																											Z
	1	2	3	4	5	6	7	8	9	10	11	12	13	14	15	16	17	18	19	20	21	22	23	24	25		

PLACE MONUMENT SYMBOL AT PROPER LOCATION ON ABOVE INDEX

North _____ Elev. _____

East _____

Hor. Datum _____ Vert. Datum _____

LATITUDE _____ ELLIPS. HT. _____

LONGITUDE _____

NAD83(91) _____ NETWORK ADJ. YR _____

GPS (X) _____ TRAVERSE (X) _____

BASED ON THE FOLLOWING CONTROL: _____

CORNER MONUMENT

WITNESS MONUMENT

BEARINGS ARE BASED ON: _____

FIELD BOOK _____ PAGE # _____

SHEET 1 OF 6

SHOW A PLAN VIEW DRAWING DEPICTING THE CORNER MONUMENT AND SURROUNDING PHYSICAL FEATURES, INCLUDING THE EXCAVATION AREA AND DEPTH.

PLANNING & ZONING COMMITTEE ADOPTED THIS FORM ON 12/2/1982

CORNER CODE 2-21(2)

CE631 SECORSEC35

(B) Describe any record evidence, monument evidence, occupational evidence, testimonial evidence or any other material evidence you considered, and whether the monument was found or placed.

- 1833 MULLETT WEST ON SOUTH SIDE SECTIONS 34 & 35 {35}**
1518 LEAVE PRAIRIE TO ENTER MARSH
2442 STREAM 6.6' C SOUTH
2508 LEAVE MARSH AND ENTER PRAIRIE
SET QUARTER SECTION POST IN PRAIRIE AND MADE MOUND
5280 SET POST CORNERS SECTIONS 34 & 35 IN PRAIRIE AND MADE MOUND. LAND ROLLING PRAIRIE SECOND RATE. BY OBSERVATION VAR 7-45E
NORTH BETWEEN SECS 1 & 2
2640 QUARTER SEC COR {BURR O 12 N71E 148.5' BURR O 24 S47W 48.84' BURR O 12 BURR O 24} MARKED
5240.4 INT. N BDG 3.3' W OF P {BURR O. 24 S41E 316.8' BURR O. 14 S45W 293.7 LAND HIGH & ROLLING 2ND RATE BUR & BLACK O. TIMBER FRIDAY DEC 20TH 1833
- 1833 MULLETT VAR 7-55 WEST ON SOUTH SIDE OF SECTION 36 T3N R11E**
2640 SET QUARTER SECTION POST IN PRAIRIE AND MADE MOUND
5280 SET POST CORNER SECTIONS 35 & 36 BUR OAK 10 N70E 411.84' BUR OAK 8 N64 1/2 W 557.7' LAND ROLLING SECOND RATE PRAIRIE.
- 1833 HARRISON NORTH BETWEEN SECS 1 & 2**
2640 QUARTER SEC COR {BURR O 12 N71E 148.5' BURR O 24 S47W 48.84' BURR O 12 BURR O 24} MARKED
5240.4 INT. N BDG 3.3' W OF P {BURR O. 24 S41E 316.8' BURR O. 14 S45W 293.7 LAND HIGH & ? 2ND RATE BUR & BLACK O. TIMBER FRIDAY DEC 20TH 1833
- 1845 TWP RD RECORDS BK 1 PG 5 BEGINNING AT THE NW COR OF SEC 1 AND RUNNING SOUTH ON THE LINE BETWEEN SEC 1 & 2 IN SAID TWP 2602.38' TO THE QUARTER POST ON THE WEST SIDE OF SEC 1 AFORESAID; THENCE SOUTH ON THE LINE AFOREMENTIONED TO THE SW COR OF SAID SEC 1 IN ALL 5242.38'? ((7) 49 CH & 43 LKS)**
- 1846 TWP RD REC BK 1 PG 14 BEGINNING AT THE 1/4 POST ON WESTSIDE OF SEC 12 T2N R11E AND RUNNING NORTH 2640 ON THE WEST SIDE OF SAID SEC 12; THENCE NORTH 5240.4' ON THE WEST SIDE OF SEC 1 IN SAME TOWN AND RANGE; THENCE NORTH 5280 ON THE WEST SIDE OF SEC 36, T3N OF RANGE 11 EAST. SAID RD IS 66' IN WIDTH. VARIATION OF NEEDLE 8 E.**
- 1868 LOCKE PLYMOUTH TWP REMONUMENTATION NOTES.**
PG 35 SOUTH BETWEEN SECS 1 & 2 VAR 7-10
2621.52 INTERSECTED 1/4 LINE AT COR. FOUND SOUTH BT AND STAKE & STONE SET ON CORNER. COR IN CENTER OF HIGHWAY AND IN LINE OF E & W FENCE.
CONTINUED SOUTH WITH VAR 7-25
5285.28 INTERSECTED SOUTH BOUNDARY 2.97' EAST OF COR. VAR CORRECTED 7-21 AUG 27 1868
PG 34 WEST ON NORTH LINE SECTION 1.
2668.38 INTERSECTED 1/4 LINE FOR TOWN 3 (CENTER) 1.98' SOUTH OF COR. FOUND LARGE LIMESTONE IN CENTER OF HIGHWAY AND IN LINE OF N AND S FENCES.
5334.12 INTERSECTED WEST BOUNDARY 14.52' SOUTH OF COR. FOUND BT IN SEC 2

Donald James

SEAL

10-12-2009

CE631 SECORSEC35

5330.82 INTERSECTED COR FOR TOWN 3 FOUND BT IN SEC 35 AND STUMP OF BT IN SEC 36. COR IN CENTER OF HIGHWAY.

2667.06 SET 1/4 COR 1.32' EAST OF 1/4 COR FOR TOWN 3 FOR FIRST HALF MILE VAR CORRECTED 6-58, FOR LAST HALF MILE VAR CORRECTED 7-11 1/4 MONUMENT MARKED WITH FIGURE 1 ON SOUTH FACE AUG 27, 1868

PG 38 EAST ON NORTH LINE SEC 2 VAR 5-45

505.56 CENTER SLUICE BRIDGE

2657.49 INTERSECTED 1/4 LINE FOR TOWN 3 7.26' NORTH OF COR. FOUND STONE WITH STAKE SET BY ANDREW CODDINGTON IN OLD MOUND. COR. IN CENTER OF HIGHWAY AND IN LINE OF FENCE RUNNING N. VAR CORRECTED 5-36

CONTINUED EAST FROM 1/4 COR OF T3 WITH VAR 7-12

3034.02 CENTER OF BRIDGE 33' WIDE OVER CREEK.

5313.66 INTERSECTED EAST BOUNDARY AT COR.

5316.96 INTERSECTED EAST BOUNDARY OF SEC 35 T3N AT COR.

2656.83 SET 1/4 COR 0.66' WEST OF 1/4 COR FOR T3N 1/4 MONUMENT MARKED WITH FIG 2 ON SOUTH FACE. [MID WAY BETWEEN NW & NE CORNERS SEC 2] AUG 28, 1868

1877 RUGER VOL 2 PG 234 FOUND STONE MONUMENT @ NE COR SEC 1. CALLS FOR 2652.54' TO N 1/4 CORNER OF SECTION 2 AND 2616.89' TO EAST QUARTER CORNER OF SECTION 2. STATES THAT THE N 1/4 COR SEC 2 IS SOUTH OF A LINE DRAWN FROM SECTION CORNER TO SECTION CORNER [NW SEC 2 TO NE SEC 2].

1933 SUNNY VOL 3 PG 234 & 235 @ NE COR SEC 2 SET 1X30" LONG PIPE IN CONCRETE PAVEMENT, 2.4' NORTH OF CENTER OF SAME. CALLS FOR 2667.2' TO N 1/4 CORNER OF SECTION 1 AND 2621.6 TO W 1/4 CORNER OF SECTION 1.

1962 BATTERMAN JR. VOL 4 PG 142 @ NE COR SEC 2 FOUND 1" PIPE UNDER BLACKTOP AND REFERENCED SAME.

1962 STH 11 #11267 STATES NOTHING ABOUT MON.

1971 LEE GSM VOL 2 PG 30 PK @ SE COR SEC 35.

1975 COMBS GSM 5-169 FD PIPE FD IRON PIPE @ NE COR SEC 2. LOT NEAR NE COR.

1976 BARNES VOL 5 PG 222 2664 +/- FROM SE COR SEC 35 TO E 1/4 COR SEC 35

1977 BARNES VOL 5 PG 362 FOUND A PK AS RECORDED AS THE NE CORNER OF SECTION 2 T2N R11E PLYMOUTH IN VOL 4 PG 142 & VOL 5 PG 140. IT IS ERRONEOUS. DUG AND FOUND 1" PIPE 0.3' DEEP. IT AGREED WITH THE DISTANCE TO THE N 1/4 CORNER OF SECTION 2 AS RECORDED IN VOL 3 PG 235. SET ALUMINUM MONUMENT. DUG AND FOUND NOTHING AT SE CORNER OF SECTION 35. SET ALUM MONUMENT AT RECORD DISTANCE FROM NE CORNER OF SEC 2 AS RECORDED IN VOL 3 PG 235. CALLS FOR 2656.86 TO N 1/4 CORNER OF SECTION 2.

1979 SCHROEDER VOL 5 PG 531 SE COR SEC 35 TO S 1/4 COR SEC 35 IS 2659.5, SE COR SEC 35 TO E 1/4 COR SEC 35 IS 2661.58, & ANGLE @ SE COR SEC 35 IS 89-48 FROM S 1/4 COR TO E 1/4 COR SEC 35.

1979 SCHROEDER GSM VOL 8 PG 333 STATES NOTHING ABOUT MON. ANGLE 89-48 @ SE COR SEC 35 FROM S 1/4 TO E 1/4 COR SEC 35.

1979 SCHROEDER GSM VOL 8 PG 334 STATES NOTHING ABOUT MON. @ SE COR SEC 2. ANGLE 89-48 @ SE COR SEC 35 FROM S 1/4 TO E 1/4 COR SEC 35. LOTS CREATED NEAR SE COR SEC 35.

ENDORSED

SEALED

10/12-2009
D. Barnes

SHEET 2 OF 6
CORNER CODE Z-21 (2)

CE631 SECORSEC35

- 1979 NORTHROP MAP #809 BERNTSEN @ NE COR SEC 2 FD ALUM. MON. OF REC. WEST OF SE COR SEC 35. 2660.25 FROM SE COR SEC 35 TO E 1/4 COR SEC 35.
- 1980 BARNES CENTER TWP REMON. CALLS FOR SW COR SEC 36 AS 3.3 EAST OF NW COR SEC 1.
- 1987 SCHROEDER #12727 STATES NOTHING ABOUT SE COR SEC 35 MON.
- 1988 BARNES VOL 6 PG 388 & 389 CALLS FOR RECORD DISTANCES AND CALLS FOR NB9-14-40E 2654.68 FROM NE COR SEC 2 TO N 1/4 COR SEC 2, SO-41-45E 2621.72 FROM NE COR SEC 2 TO N 1/4 COR SEC 1, SB9-56-08E 2667.20 FROM NW COR SEC 1 TO N 1/4 COR SEC 1, AND N1-01-11W 2660.68 TO FROM SE COR SEC 35 TO THE E 1/4 CORNER OF SECTION 35. FOUND DOT DISK @ SE COR SEC 35 & NE COR SEC 2.
- 1988 BARNES Z-21 (CENTER TWP) SE COR SEC 35 USING DOT CONTROL N/S 246,046.57; E/W 2,228,589.77 ALUM. MON SEE OLD TIE SHEET.
- 1989 WIDOT PROJ. MAP #16692 #1704-03-22 ALUM 246,128.43; NB8-48-56E 3.29 TO SE COR SEC 35 CENTER TWP. ALUM AT SE COR SEC 35 CENTER TWP (246,128.50; 2,228,589.06). CI AT E 1/4 COR SEC 33 (248,788-70; 2,228,541.64)
- 1992 BARNES A-21 (MAY) ALUM. MONUMENTS WILL BE DESTROYED BY ROAD CONSTRUCTION. DISTANCES & BEARINGS TO OLD REFERENCE MONUMENTS & NEW DOT REFERENCE MONUMENTS. NB8-04-47E 3.28' FROM NE COR SEC 2 TO SE COR SEC 35 CENTER TWP.
- 1992 BARNES A-21(1) & Z-21(1) (NOV) FOUND DOT DISKS @ NE COR SEC 2 & SE COR SEC 35 & ACCEPTED IT. REFERENCED SAME. 3.34' (REC 3.28') BETWEEN NE COR SEC 2 & SE COR SEC 35.
- 1993 COMBS MAP #10329 FD ALUM. MON.
- 2000 COMBS A-19(4) FD DOT DISK NB3-58-10W 13.25 FROM SET PK NAIL. THIS DISK DID NOT CHECK D.O.T. RIGHT OF WAY MAP DISTANCES EAST-WEST FOR SECTION CORNER LOCATION. DISK DID NOT CHECK D. BARNES PREVIOUSLY MEASURED DISTANCES EAST-WEST. NB9-14-40E 2657.74 TO DOT DISK @ SE COR SEC 35, SB9-20-22E 2659.14 TO DOT DISK @ SW COR SEC 35, 0.66' EAST OF N 1/4 COR SEC 3, AND STATEMENT "PRORATED DISTANCES USING DON BARNES ANGLE. D. BARNES ANGLE @ S 1/4 COR SEC 35 FROM SW TO SE COR SEC 34 IS 178-35-02. REFERENCED SAME. FD DOT DISK NB3-58-10W 13.25 & SET IRON REBAR FOR REF. MONUMENTS. SET PK MASONRY NAIL AT S 1/4 COR SEC 35.
- 2000 COMBS GCM 24-55 @ NE COR SEC 2 FD DOT DISK, @ N 1/4 COR SEC 2 & S 1/4 COR SEC 35 SET PK. 2655.02 FROM NE COR SEC 2 TO N 1/4 COR SEC 2 & S 1/4 COR SEC 35 IS 0.66 EAST OF N 1/4 COR SEC 2.
- 2001 COMBS GCM VOL 24 PG 186 DOT MON. 2654.36 FROM SE COR SEC 35 TO PK AT S 1/4 COR SEC 35
- 2001 LATHROP GCM VOL 25 PG 164 -166 FD DISK @ NE COR SEC 2 & 2621.95 TO W 1/4 COR SEC 1.
- 2002 COMBS #14515 @ NE COR SEC 2 FD DOT MON. SB9-56-51E 3.33 TO DOT MON. @ SW COR SEC 36 & 2667.19 FROM NW COR SEC 1 TO N 1/4 COR SEC 1.
- 2003 BARNES A-21(2) USED MY 1992 OBSERVATIONS. ACCEPTED DOT DISK & REFERENCE MONUMENTS
- 2004 BARNES PLYMOUTH TWP REMON. NB9-24-13E 3.28 FROM NW COR SEC 1 TO SW COR SEC 36, SB9-18-28E 2662.85 FROM SW COR SEC 36 TO S 1/4 COR SEC 36

SHEET 3 OF 6

CORNER CODE Z-21 (2)

Donald Barnes
10-12-2009

CE631 SECORSEC35

2005 GOMBS CSM VOL 28 PG 159 FD DISK @ NW COR SEC 1 & PK @ N 1/4 COR SEC 1. 2667.18 BETWEEN CORNERS.

2005 GOMBS CSM VOL 28 PG 266 FD DISK @ NW COR SEC 1 & PK @ W 1/4 COR SEC 1. 2661.95 BETWEEN CORNERS.

2005 LATHROP #15224 FD DOT MON. @ NE COR SEC 2 S89-56-51E 3.33 TO DOT MON @ SW COR SEC 36. 2667.19 FROM NW COR SEC 1 TO N 1/4 COR SEC 1.

2006 GOMBS CSM VOL 30 PG 268 FD DISK @ NE COR SEC 2.

2008 GOMBS CSM VOL 32 PG 179 FD DISK @ S 1/4 COR SEC 36 & SW COR SEC 36. 2662.72 BETWEEN S 1/4 COR TO SW COR SEC 36.

2008 GOMBS CSM VOL 32 PG 220 SAME AS PG 179 BUT ALTERED LOT.

FD WIDOT DISKS @ NE COR SEC 2 & SE COR SEC 35 & ALL 4 WIDOT REF. DISKS. @ SE COR THE 1992 REG ALUM IS .10' NORTH & 0.02' WEST OF WIDOT DISK. @ NE COR SEC 2 THE 1992 REG ALUM IS 0.04 NORTH & 0.03 EAST OF THE WIDOT DISK.

C) Was the corner restored through acceptance of (1) an obliterated evidence location, or, (2) a found perpetuated location?

ACCEPTED THE ALUM. MONUMENT POSITION. @ THE SE COR SEC 35 THE WIDOT DISK IS S10-45-47E 0.10' OF THE REG. ALUM. @ THE NE COR SEC 2 THE WIDOT DISK IS S38-10-57W 0.05' OF THE REG. ALUM.

D) Describe any material discrepancy between the location of the corner as restored or reestablished and the location of that corner as previously restored or reestablished by distance and direction. Show the discrepancy on the plan view drawing under (a), above. Show the distances between the corner as previously restored or reestablished and (1) the corner as restored or reestablished, and (2) to at least 4 of the witness monuments shown on the drawing in (a), above.

SEE REFERENCE TIES.

I, **Donald Barnes**, hereby certify that the corner location as identified by the corner code index was determined by me under my direction and control and that this U.S. Public Land Survey Monument Record is correct and complete to the best of my knowledge and belief.

Donald Barnes
Seal

Emboss

10/2-2009

SHEET 4 OF 6

CORNER CODE **Z-21 (2)**

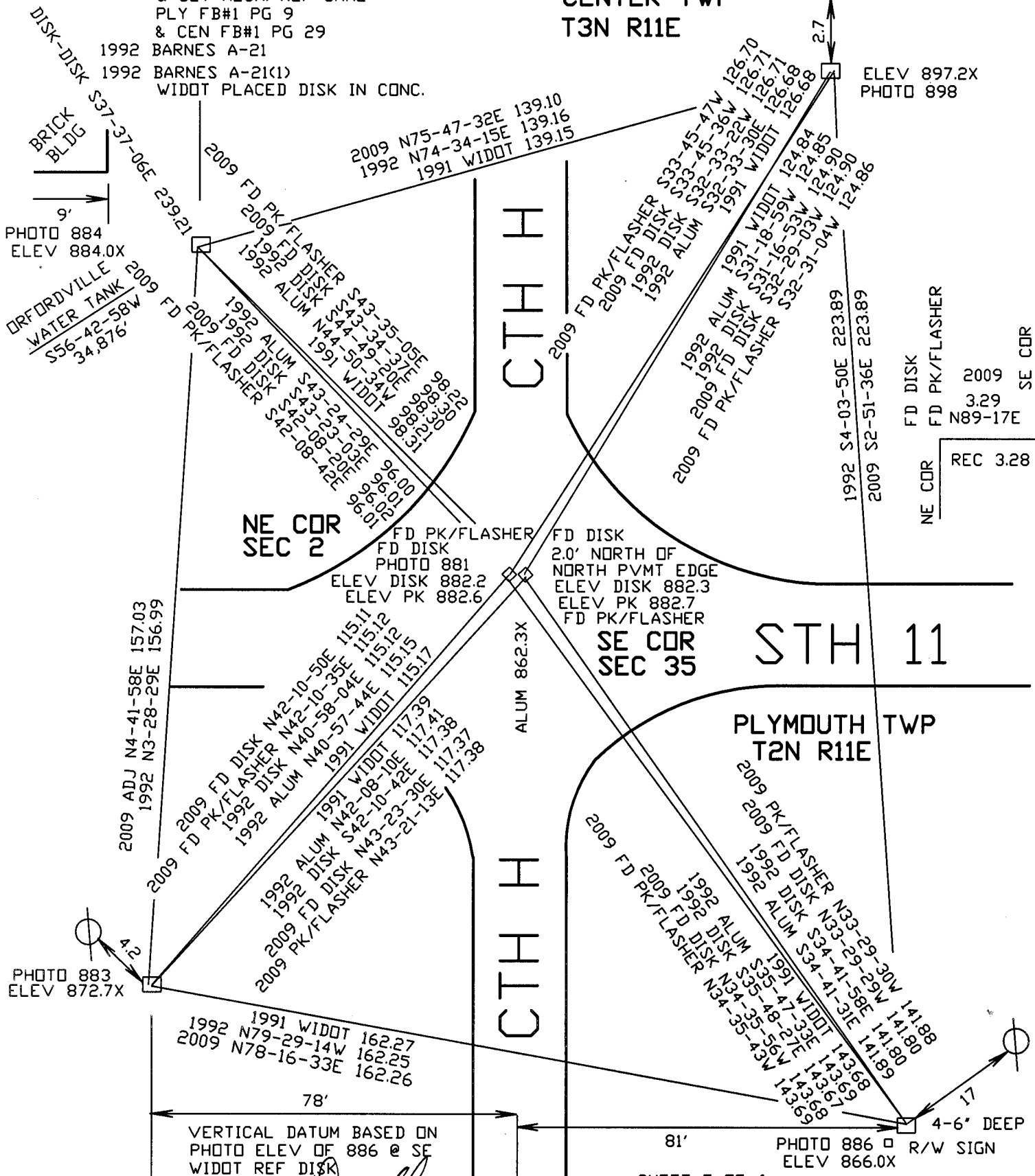
A-E 7.08 REQUIREMENT

G:\PLYDISK\DISK1\PL511.DWG
 G:\PLYDISK\DISK3\PL511(SOFT)

□ FOUND DOT DISK
 IN CONCRETE MONUMENT
 WIDOT SET IN 1992

1962 BATTERMAN VOL 4 PG 142
 1976 BARNES PLY FB#1 PG 2
 FD PK
 1977 PLY FB #1 PG 9 FD PIPE
 1977 CENTER TWP FB #1 PG 29
 OBSERVATION SHEETS 6-511,1-511,3-511,4-511
 1977 BARNES VOL 5 PG 362 FD PIPE
 & SET ALUM. REF SAME
 PLY FB#1 PG 9
 & CEN FB#1 PG 29
 1992 BARNES A-21
 1992 BARNES A-21(1)
 WIDOT PLACED DISK IN CONC.

CENTER TWP
 T3N R11E



ELEV 897.2X
 PHOTO 898

PHOTO 884
 ELEV 884.0X

ORFORDVILLE WATER TANK
 S56-42-58W 2009
 S56-42-58W 34.876'

NE COR
 SEC 2

FD PK/FLASHER
 FD DISK
 PHOTO 881
 ELEV DISK 882.2
 ELEV PK 882.6

SE COR
 SEC 35

FD DISK
 FD PK/FLASHER
 2009
 3.29
 N89-17E
 SE COR
 REC 3.28

STH 11

PLYMOUTH TWP
 T2N R11E

PHOTO 883
 ELEV 872.7X

PHOTO 886 □ 4-6' DEEP
 ELEV 866.0X R/W SIGN

VERTICAL DATUM BASED ON
 PHOTO ELEV OF 886 @ SE
 WIDOT REF DISK

SHEET 5 OF 6

Z-21(2)

1012-2009
[Signature]
 EMBOSSED SEAL

Donald Barnes

10-12-2009

CENTER TWP T3N R11E

2009 BARNES 178-34-54
2004 BARNES 178-34-54
1997 BARNES 178-35-02
1992 COMBS A-19 178-35-02

1979 BARNES 88-68-48
2009 BARNES 88-68-48
1979 SCHROEDER 88-68-48

2009 BARNES 89-52-46E 2657.30
2004 BARNES 89-52-46E 2657.30
2000 COMBS A-19 89-14-40E 2657.74
1997 BARNES 89-52-52E 2657.32
1989 WIDOT 2657.31
1988 BARNES 6-389 89-14-41E 2657.31
1979 SCHROEDER 5-531 2659.50
1868 LOCKE 2659.47
1833 MULLETT 2640

2009 ADJ BARNES 89-18-24E 2662.93
2008 COMBS CSM 2662.72
2004 BARNES 89-18-28E 2662.85
1997 BARNES 89-18-19E 2662.64
1989 DOT INVERSE 89-56-30E 2662.74
1989 DOT 2662.77
1988 BARNES 6-389 89-56-30E 2662.72
1933 SUNNY 3-234 2662.58
1868 LOCKE 2662.44
1833 MULLETT VAR7-55 2640

2009 BARNES N89-24-25E 3.28
2005 LATHROP #15224 S89-56-51E 3.33
2004 BARNES N89-24-13E 3.28
2002 COMBS #15224 S89-56-51E 3.33
1997 BARNES S89-24-30W 3.30
1992 BARNES A21 3.28
1989 WIDOT N88-46-52E 3.29
1988 BARNES 6-389 3.28
1977 BARNES 5-362 3.3
1933 SUNNY 3-235 3.3
1868 LOCKE #6828 3.3
1868 LOCKE 3.30
1833 HARRISON 3.3

35

35

35

35

36

36

36

2

2

2

2

2

2

2

(21-2)

246,124.14
2,223,273.46
1989 WIDOT

1868 LOCKE VAR5-36 2656.83
1877 RUGER 2-234 VAR4-45 2654.19
1933 SUNNY 3-235 2656.9
1988 BARNES 6-389 S89-20-19E 2658.06
1989 WIDOT INVERSE S89-20-19E 2658.07
2000 COMBS CSM24-63 2658.48
2004 BARNES S88-42-06E 2658.17
2009 BARNES S88-42-07E 2658.21

1868 LOCKE #6828 VAR7-12 2656.83
1868 LOCKE REMON 2656.83
1877 RUGER 2-234 VAR4-45 2652.54
1933 SUNNY 3-235 2656.9
1977 BARNES 5-362 2656.86
1988 BARNES 6-389 89-14-44E 2654.68
1989 WIDOT INVERSE 89-14-43E 2654.65
1997 BARNES 89-52-54E 2654.69
2000 COMBS CSM24-55 2655.02
2004 BARNES 89-52-48E 2654.67
2009 BARNES 89-52-49E 2654.67

1868 LOCKE 2621.5
1933 SUNNY 2621.5
1877 RUGER 2-234 2616.89
1868 LOCKE V7-10 2621.52
1845 RD REC BK1-15 2602.38
1989 WIDOT 246,124.14
2,228,589.06
2,228,589.06

2009 BARNES 50-25-42E 2701.37
1988 BARNES 6-389 S1-03-59E 2701.33
1877 RUGER 7-16 2702.7
1868 LOCKE VAR 7-16 2702.7

2009 BARNES 50-03-12E 2667.19
2004 BARNES 589-18-11E 2667.37
2005 COMBS CSM28-159 2667.18
2005 LATHROP #15224 2667.19
2009 BARNES 589-18-07E 2667.45

1989 WIDOT

1989 WIDOT

1989 WIDOT

1989 WIDOT

1989 WIDOT

1989 WIDOT

PLYMOUTH TWP T2N R11E