

# U.S. PUBLIC LAND SURVEY MONUMENT RECORD

For Public Land Survey Corners in:

WI ADMINISTRATIVE CODE A-E 7.08 REQUIREMENT

T. 3N., R. 11E

### CORNER CODE INDEX

A	1	2	3	4	5	6	7	8	9	10	11	12	13	14	15	16	17	18	19	20	21	22	23	24	25
B																									
C	6					9				A					3						2				1
D																									
E																									
F																									
G	7																								
H																									
I																									
J																									
K																									
L	18									11					16						15				13
M																									
N																									
O																									
P	19																								
Q																									
R																									
S																									
T	30																								
U																									
V																									
W																									
X																									
Y																									
Z																									

CENTER TWP

ROCK COUNTY WI

IF AVAILABLE  
ROCK COUNTY COORDINATES PREFERRED

North \_\_\_\_\_ Elev. \_\_\_\_\_

East \_\_\_\_\_

Hor. Datum \_\_\_\_\_ Vert. Datum \_\_\_\_\_

LATITUDE \_\_\_\_\_ ELLIPS. HT. \_\_\_\_\_

LONGITUDE \_\_\_\_\_

GPS (X) \_\_\_\_\_ TRAVERSE (X) \_\_\_\_\_

BASED ON THE FOLLOWING CONTROL:

PLACE MONUMENT SYMBOL  AT PROPER LOCATION ON ABOVE INDEX

CORNER MONUMENT

WITNESS MONUMENT

(a)

BEARINGS ARE BASED ON:

FIELD BOOK \_\_\_\_\_ PAGE # \_\_\_\_\_

SHEET 1 OF 3

SHOW A PLAN VIEW DRAWING DEPICTING THE CORNER MONUMENT AND SURROUNDING PHYSICAL FEATURES, INCLUDING THE EXCAVATION AREA AND DEPTH.

PLANNING & ZONING COMMITTEE ADOPTED THE ABOVE FORM ON 12/2/1982

CORNER CODE 219(2)

(B) Describe any record evidence, monument evidence, occupational evidence, testimonial evidence or any other material evidence you considered, and whether the monument was found or placed.

- 1868 LOCKE REMONUMENTATIN INTERSECTED  $\frac{1}{4}$  LINE FOR TOWN 3 7.26' NORTH OF COR. FOUND STONE WITH STAKE SET BY ANDREW CODDINGTON IN OLD MOUND. COR IN CENTER OF HWY & IN LINE OF FENCE RUNNING NORTH. PLACED NORTH  $\frac{1}{4}$  COR OF SECTION 2 0.66' WEST OF  $\frac{1}{4}$  COR OF SECTION 35. PLACED CUT LIMESTONE AT NORTH  $\frac{1}{4}$  COR. SHOWS A DISTANCE OF 2657.49' FROM THE SW TO S  $\frac{1}{4}$  CORNERS OF SEC 35.
- 1877 RUGER VOL 2 PG 234 SUBDIVIDED SECTION 2 STATES NOTHING ABOUT THE S  $\frac{1}{4}$  COR BUT STATES THAT THE N  $\frac{1}{4}$  COR OF SECTION 2 IS SOUTH OF A LINE DRAWN FROM THE NW TO NE CORNERS OF SEC 2.
- 1933 SUNNY VOL 3 PG 235 AT THE N  $\frac{1}{4}$  COR OF SECTION 2 SET 1"X36" PIPE IN CONCRETE PAVEMENT 8.0' SOUTH OF CENTER OF SAME. SHOWS A DISTANCE OF 2656.9 TO BOTH THE NW AND NE CORNERS OF SECTION 2. SHOWS THE N  $\frac{1}{4}$  COR 0.66' WEST OF THE S  $\frac{1}{4}$  COR OF SECTION 35. STATES NOTHING ABOUT THE S  $\frac{1}{4}$  COR.
- 1977 BARNES VOL 6 PG 364 PLACED ALUM. MONUMENT ON LINE WITH N  $\frac{1}{4}$  COR OF SECTION 2 AND THE NE COR OF SECTION 2 AT RECORD DISTANCE, 0.66'. AT N  $\frac{1}{4}$  COR OF SEC 2 FOUND 1" PIPE 0.2' DEEP.
- 1988 BARNES A19 DUG AND FOUND CUT LIMESTONE 26" DEEP AT THE N  $\frac{1}{4}$  COR OF SEC 2 T2N R11E. THE STONE IS 3.26' FROM THE ALUMINUM MONUMENT. REJECTED THE PERPETUATED LOCATION THAT SUNNY ESTABLISHED IN 1933. ESTABLISHED THE SOUTH QUARTER ON LINE WITH THE CUT LIMESTONE AND THE NW CORNER OF SEC 2. DID NOT MONUMENT BECAUSE STH 11 WILL BE RECONSTRUCTED WITHIN THE NEXT TWO YEARS.
- 1992 BARNES Z-19(1) FOUND DOT DISK THAT APPEARED TO PERPETUATE THEIR STATION 379+20. ACCEPTED TIES OF RECORD. DOT DID NOT PLACE A MONUMENT

COMBS CONTACTED ME ABOUT EXISTING TIES. USED OLD OBSERVATIONS AND REDREW TIES TO CLARIFY THINGS.

C) Was the corner restored through acceptance of (1) an obliterated evidence location, or, (2) a found perpetuated location?

ACCEPTED TIES OF RECORD. DID NOT PLACE MONUMENT.

D) Describe any material discrepancy between the location of the corner as restored or reestablished and the location of that corner as previously restored or reestablished by distance and direction. Show the discrepancy on the plan view drawing under (a), above. Show the distances between the corner as previously restored or reestablished and (1) the corner as restored or reestablished, and (2) to at least 4 of the witness monuments shown on the drawing in (a), above.

(E) Was the corner reestablished through lost corner proportionate methods? If so, show the method, including the directions and distances to other public land survey corners used as evidence or used for proportioning the corner location.

I, Donald Barnes, hereby certify that the corner location as identified by the corner code index was determined by me under my direction and control and that this U.S. Public Land Survey Monument Record is correct and complete to the best of my knowledge and belief.

seal

*Donald Barnes*  
7/10/00  
emboss

Number of included sheets **1**

CORNER CODE **Z19(2)**

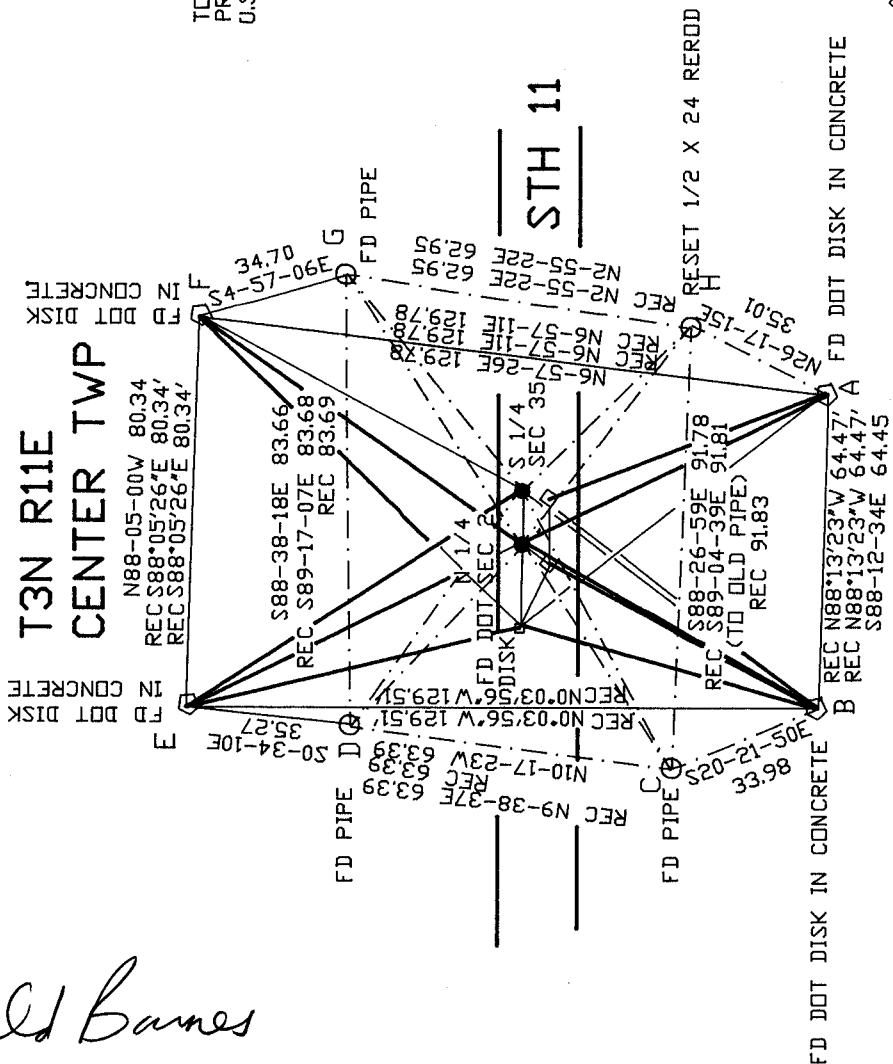
A-E 7.08 REQUIREMENT

Donald Barnes

EMBOSSSED SEAL

7/10/00

Z19(2)

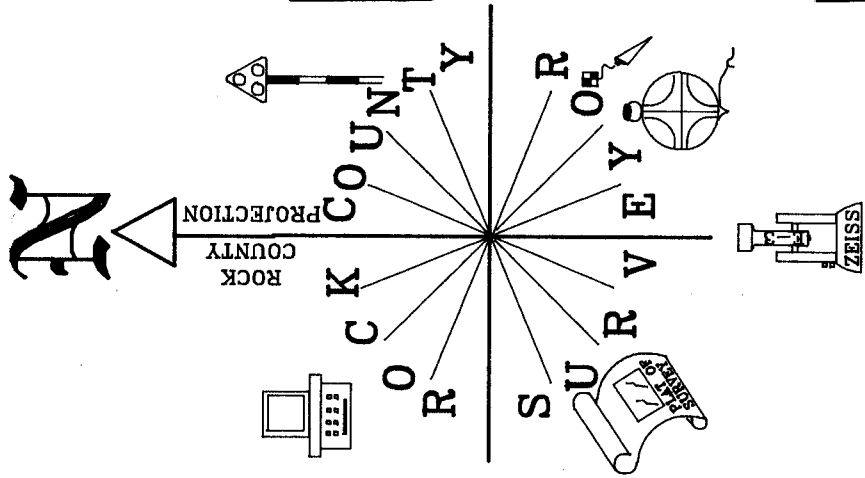


N 1/4 COR SEC 2 PLYMOUTH TWP IS ON THE WEST SIDE. FOUND CUT LIMESTONE.

T2N R11E PLYMOUTH TWP

TO CLARIFY ALL THE PREVIOUS TIES, I USED ALL THE PREVIOUS ANGLES AND DISTANCES TO COMPILE THE FOLLOWING U.S. PUBLIC MONUMENT RECORD.

N 1/4 COR SEC 2  
 S 1/4 COR SEC 35



TO N 1/4 COR SEC 2

LIMESTONE

A	N22-59-18W	67.06
B	N32-37-39E	70.91
C	N60-54-04E	57.29
D	S48-18-07E	51.88
E	S28-48-55E	79.64
F	S31-59-30W	79.10
G	S54-05-12W	55.44
H	N53-57-14W	51.57

RECORD

N23-00-52W	67.02
N32-38-34E	70.88
N60-34-50E	57.29
S48-15-39E	51.89
S28-47-59E	79.67
S31-58-29W	79.15
S54-02-47W	55.47
N54-00-23W	51.56

TO OLD ALUM. MON. @ ERRONEOUS S 1/4 COR SEC 35

A	N25-02-20W	65.52
B	N32-36-47E	68.08
C	N62-17-12E	54.81
D	S45-14-30E	52.38
E	S27-03-06E	81.01
F	S32-01-32W	81.93
G	S53-04-53W	58.09
H	N57-05-57W	51.49

TO ERRONEOUS DOT DISK RECORD

A	N31-44-37W	75.23
B	N21-50-34E	66.76
E	S20-18-40E	72.01
F	S40-27-38E	85.22

TO S 1/4 COR SEC 35  
NEW POSITION-ND MON.

A	N22-28-00W	66.80
B	N33-04-26W	71.27
C	N61-13-04E	57.86
D	S48-47-00E	52.37
E	S29-13-48E	79.96
F	S31-35-06W	78.76
G	S53-41-02W	54.91
H	N53-31-00W	51.03

RECORD

N22-28-50W	66.78
N33-05-18E	71.26
N61-14-37E	57.86
S48-45-43E	52.38
S29-13-32E	79.98
S31-34-07W	78.78
S53-39-04W	54.92
N53-32-58W	51.03

TO OLD ALUM. MON. @  
ERRONEOUS N 1/4  
COR SEC 2

A	N25-33-09W	65.81
B	N32-08-05E	67.74
C	N61-56-41E	54.23
D	S44-44-37E	51.90
E	S26-38-26E	80.70
F	S32-25-20W	82.27
G	S53-29-01W	58.61
H	N57-28-34W	52.06

RECORD

N25-32-52W	65.84
N32-07-16E	67.78
N61-55-02E	54.25
S44-45-56E	51.87
S26-39-14E	80.67
N32-25-45E	82.25
S53-30-00W	58.59
N58-03-15W	52.12

TO CLARIFY ALL THE PREVIOUS TIES, I USED ALL THE PREVIOUS ANGLES AND DISTANCES TO COMPLETE THE FOLLOWING U.S. PUBLIC MONUMENT RECORD.

*Dorothy Barnes*  
EMBOSSED SEAL  
07/10/00

RON COMBS REPORTED DISTANCE OF  
2671.2 FROM DOT DISK TO DOT DISK AT SE COR SEC 31