

U. S. PUBLIC LAND SURVEY MONUMENT RECORD

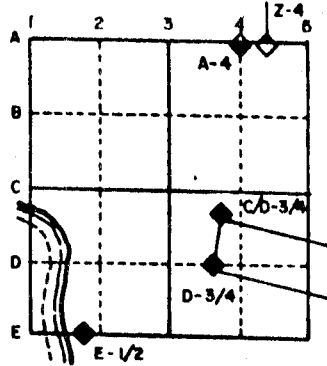
For Public Land Survey Corners in the
T. 3 N., R. 11 E.

CORNER CODE INDEX

	1	2	3	4	5	6	7	8	9	10	11	12	13	14	15	16	17	18	19	20	21	22	23	24	25
A																									
B																									
C	6																								
D		5																							
E			4																						
F				3																					
G					2																				
H																									
I																									
J	7																								
K		8																							
L			9																						
M				10																					
N					11																				
O						12																			
P							13																		
Q								14																	
R									15																
S										16															
T											17														
U												18													
V													19												
W														20											
X															21										
Y																22									
Z																	23								
																		24							
																			25						
																				26					
																					27				
																						28			
																							29		
																								30	
																									31
																									32
																									33
																									34
																									35
																									36

PLACE MONUMENT SYMBOL (◆) AT PROPER LOCATION ON ABOVE INDEX

EXAMPLE



CENTER TWP
ROCK COUNTY WI

IF AVAILABLE
STATE PLANE COORDINATES

North (Y) _____ Eleve. (Z) _____
 East (X) _____ Zone _____
 Hor. Datum _____ Vert. Datum _____

(a) ◆ CORNER MONUMENT ○ WITNESS MONUMENT

BEARINGS ARE BASED ON:

FIELD BOOK _____ PAGE # _____

SHOW A PLAN VIEW DRAWING DEPICTING THE CORNER MONUMENT AND SURROUNDING PHYSICAL FEATURES, INCLUDING THE EXCAVATION AREA AND DEPTH. THE CORNER MONUMENT SHALL HAVE THE FOLLOWING CHARACTERISTICS: 1) HAVE AT LEAST TWO PREDETERMINED BREAK-OFF POINTS. 2) IF BROKEN, LEAVE A PERMANENTLY MAGNETIZED REMNANT AT THE ORIGINAL POINT. 3) MUST BE EXTENDABLE. 4) THE CAP IS INSCRIBED: ROCK COUNTY SURVEY MONUMENT - PENALTY FOR DISTURBING MARKER. 5) OR AN EXISTING CUT LIMESTONE. AN IRON PIPE 1 1/2" x 4'0" (MINIMUM) MAY BE USED IN AREAS WHERE GROUND WATER IS WITHIN ONE FOOT OF THE SURFACE. IF THE CORNER IS OCCUPIED BY AN IMPROVEMENT (MANHOLE, BURIED CABLE, ETC.) ANY DURABLE, DISTINCT MONUMENT MAY BE USED. CORNERS SHALL BE REFERENCED WITH AT LEAST 4 DURABLE WITNESS MONUMENTS. WITNESS MONUMENTS SHALL BE MADE OF CONCRETE, NATURAL STONE, IRON OR OTHER EQUALLY DURABLE MATERIAL, EXCEPT WOOD. DESCRIBE THE CORNER AND THE WITNESS MONUMENTS.

MICROFILMED

CORNER CODE:

Z 25 (1)

(B) Describe any record evidence, monument evidence, occupational evidence, testimonial evidence or any other material evidence you considered, and whether the monument was found or placed.

- 1833 ORIGINAL GOVERNMENT SURVEY. SET POST CORNER TOWNSHIPS 2 & 3 N RANGES 11 & 12 E IN PRAIRIE AND RAISED A MOUND LAND ROLLING.
- 1868 LOCK REMONUMENTATION FOUND STONE & UNDERNEATH REMAINS OF STAKE. CORNER IN CENTER OF HIGHWAY AND NEARLY IN LINE WITH N & S FENCES.
- 1933 SUNNY VOL 3 PG 234 SET 1" IRON PIPE 30" LONG IN CONCRETE PAVEMENT 0.9' NORTH OF CENTER OF PAVEMENT & IN LINE WITH N & S FENCE. SHOWS A DISTANCE OF 2657.8 TO THE EAST QUARTER CORNER OF SECTION 1 AND 2667.2 TO THE NORTH QUARTER CORNER OF SECTION 1 AND 2629.45 TO THE NORTH QUARTER CORNER OF SECTION 6.
- 1970 BATTERMAN JR. VOL 4 PG 432 FOUND 3/4" IRON PIN AT CORNER 1' NORTH OF CENTER OF PAVEMENT. REFERENCED CORNER.
- 1987 BARNES Z-1(1) FOUND PK AND 3 OF THE REFERENCE PIPES. PLACED G-1 MONUMENT TO THE NORTH EAST.
- 1988 BARNES A-25 FOUND PIPE 15" DEEP IN OLD CONCRETE PAVEMENT. DUG LARGE HOLE AND FOUND CUT LIMESTONE 2 1/2 X 8" 40 INCHES DEEP. BROKE TOP 16" INCHES OFF. PLACED MAGNET ON TOP OF STONE. EXCAVATION AREA INDICATES THAT SUNNY DID NOT DIG FOR THE CORNER.

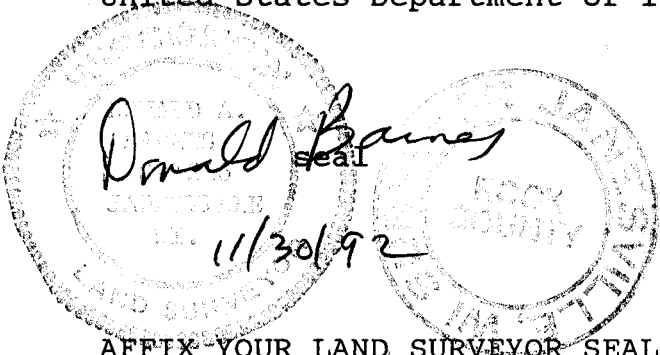
FOUND DOT DISK.

C) Was the corner restored through acceptance of (1) an obliterated evidence location, or, (2) a found perpetuated location?
ACCEPTED FOUND DOT DISK.

D) Describe any material discrepancy between the location of the corner as restored or reestablished and the location of that corner as previously restored or reestablished by distance and direction. Show the discrepancy on the plan view drawing under (a), above. Show the distances between the corner as previously restored or reestablished and (1) the corner as restored or reestablished, and (2) to at least 4 of the witness monuments shown on the drawing in (a), above.

(E) Was the corner reestablished through lost corner proportionate methods? If so, show the method, including the directions and distances to other public land survey corners used as evidence or used for proportioning the corner location.

I, Donald Barnes, hereby certify that the corner points as identified by the corner code index were, in a field survey on, November 9, 1992, established, re-established, monumented, re-monumented, recovered or restored as expressed below and in conformance with the regulations and rules as required in the current manual of survey instructions of the United States Department of Interior, Bureau of Land Management.



AFFIX YOUR LAND SURVEYOR SEAL

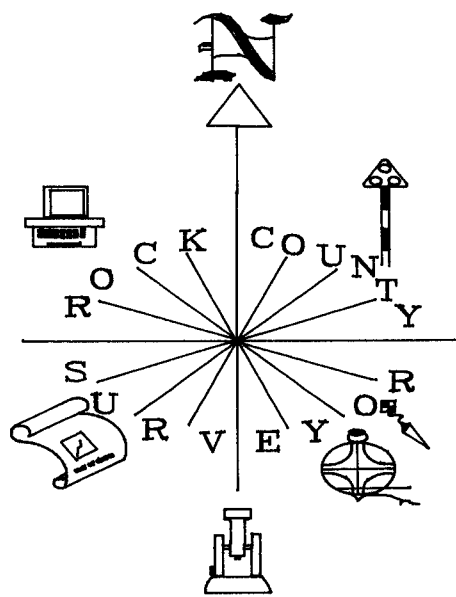
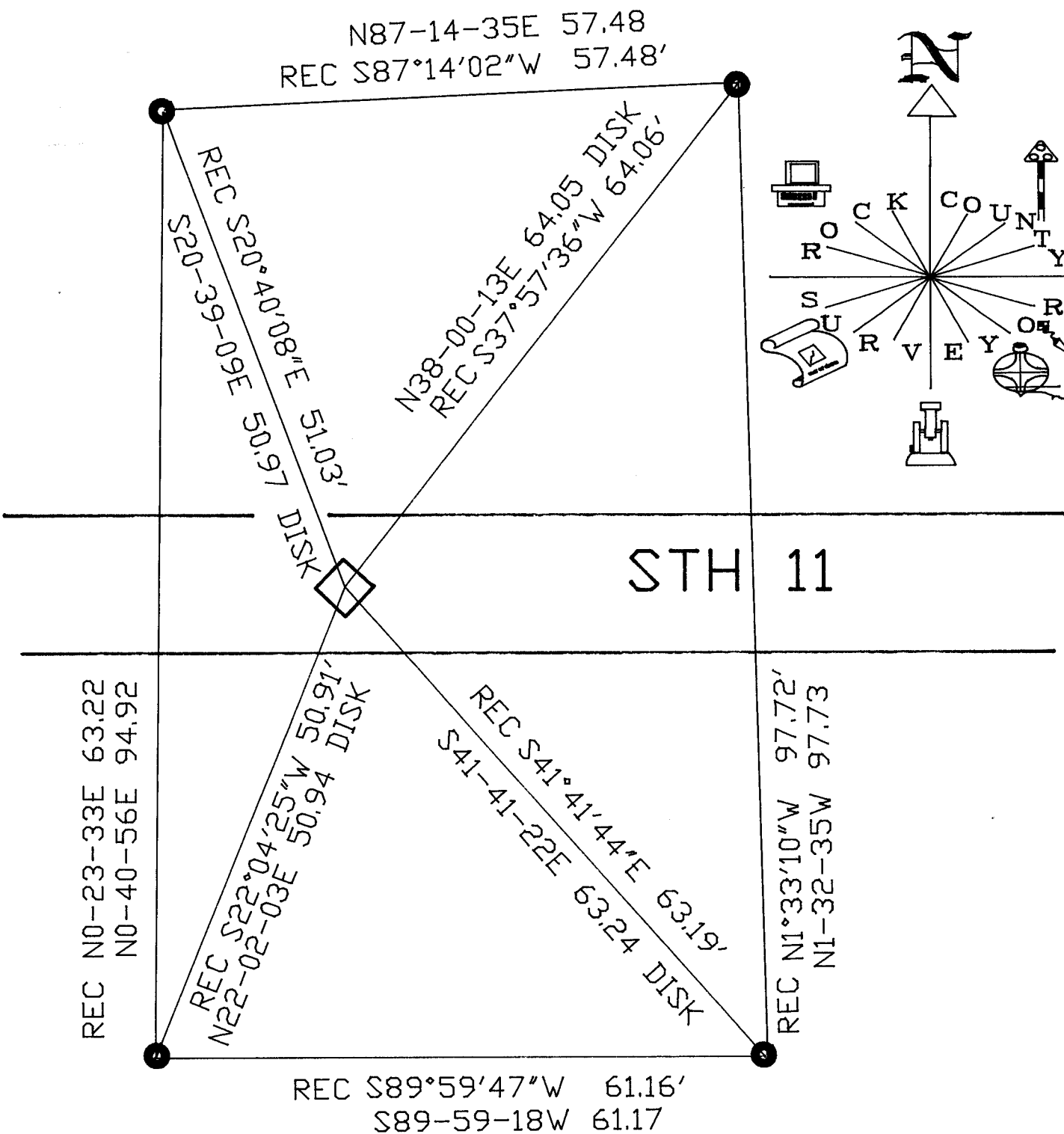
COUNTY SURVEYOR FILING DATA

Date of computer entry _____

Date microfilmed _____

Number of included sheets _____
CORNER CODE

Z 25 (1)



● FOUND DOT DISK IN CONCRETE

◇ LIMESTONE