

U.S. PUBLIC LAND SURVEY MONUMENT RECORD

For Public Land Survey Corners In: WI ADMINISTRATIVE CODE A-E 7.08 REQUIREMENT

T. 3 N. - R. 11 E. of the 4th P.M.

CORNER CODE INDEX

(PLACE "◆" SYMBOL AT PROPER PLSS CORNER LOCATION)

	2	3	4	5	6	7	8	9	10	11	12	13	14	15	16	17	18	19	20	21	22	23	24	25		
A																										A
B																										B
C	6											◆	3						2							C
D																										D
E																										E
F																										F
G																										G
H																										H
J																										J
K																										K
L	18																									L
M																										M
N																										N
O																										O
P																										P
Q	19																									Q
R																										R
S																										S
T	30																									T
U																										U
V																										V
W																										W
X	31																									X
Y																										Y
Z																										Z
	1	2	3	4	5	6	7	8	9	10	11	12	13	14	15	16	17	18	19	20	21	22	23	24	25	

CENTER _____ TWP
ROCK COUNTY WI

COORDINATES

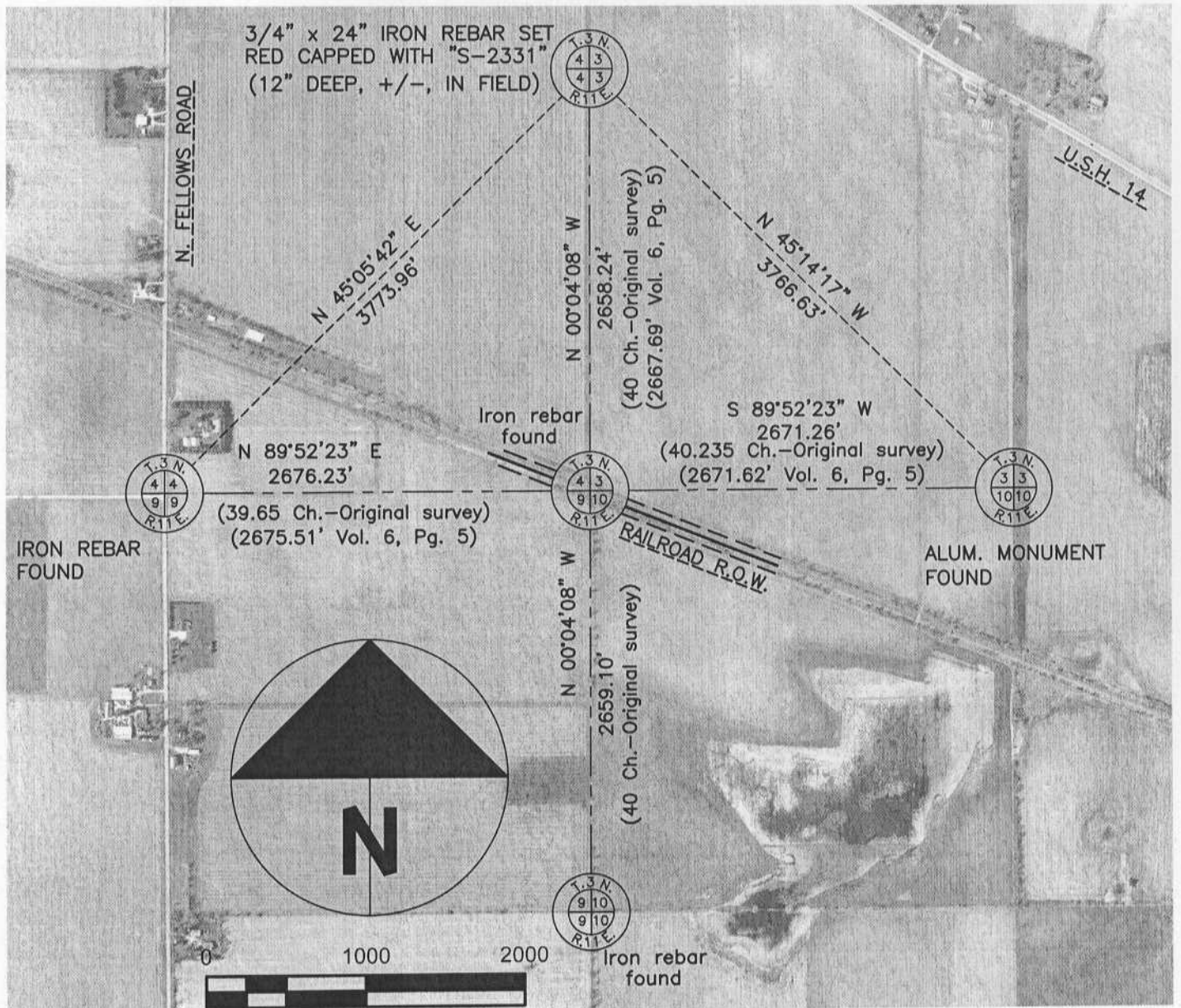
(GNSS DERIVED VIA WISCORS)

NORTHING: 294473.22 ELEV: N/A

EASTING: 448162.37

Hor. Datum: WCCS-ROCK, (NA2011)

Vertical Datum: NAVD 88, (If applicable)



B) Describe any record evidence, monument evidence, occupational evidence, testimonial evidence or any other material evidence you considered, and whether the monument was found or placed.

The record cast iron monument was found in several different pieces and was obviously hit during farming operations. Staff from Combs & Associates, Inc. and I excavated for quite some time at this location and ultimately arrived at what appeared to be the base of the cast-iron monument location; I set a red-capped ¾ x 24" rebar at the apparent base stamped with "S-2331". This is a subjective location but, is based on the best available evidence. The existing frost seriously hampered our efforts which included digging, chipping, shoveling and probing. Based on the measurements to adjacent corners, this location is reasonable and the red capped rebar is accepted.

C) Was the corner restored through acceptance of (1) an obliterated evidence location, or, (2) a found perpetuated location?

Found perpetuated location.

D) Describe any material discrepancy between the location of the corner as restored or reestablished and the location of that corner as previously restored or reestablished by distance and direction. Show the discrepancy on the plan view drawing under (a), above. Show the distances between the corner as previously restored or reestablished and (1) the corner as restored or reestablished, and (2) to at least 4 of the witness monuments shown on the drawing in (a), above.

I did not find a discrepancy between the corner restored and a previously documented corner location.

(E) Was the corner reestablished through lost corner proportionate methods? If so, show the method, including the directions and distances to other public land survey corners used as evidence or used for proportioning the corner location.

N/A

I, **Jason R. Houle**, hereby certify that the corner location as identified by the corner code index was determined by me under my direction and control and that this U.S. Public Land Survey Monument is correct and complete to the best of my knowledge and belief.

CORNER CODE: C-13
(A.E. 7.08 REQUIREMENT)

