

PLAT AND RECORD

Of a Survey on Section 4 T 2 R 14 E. of the 4 P. M. in Bradford Township

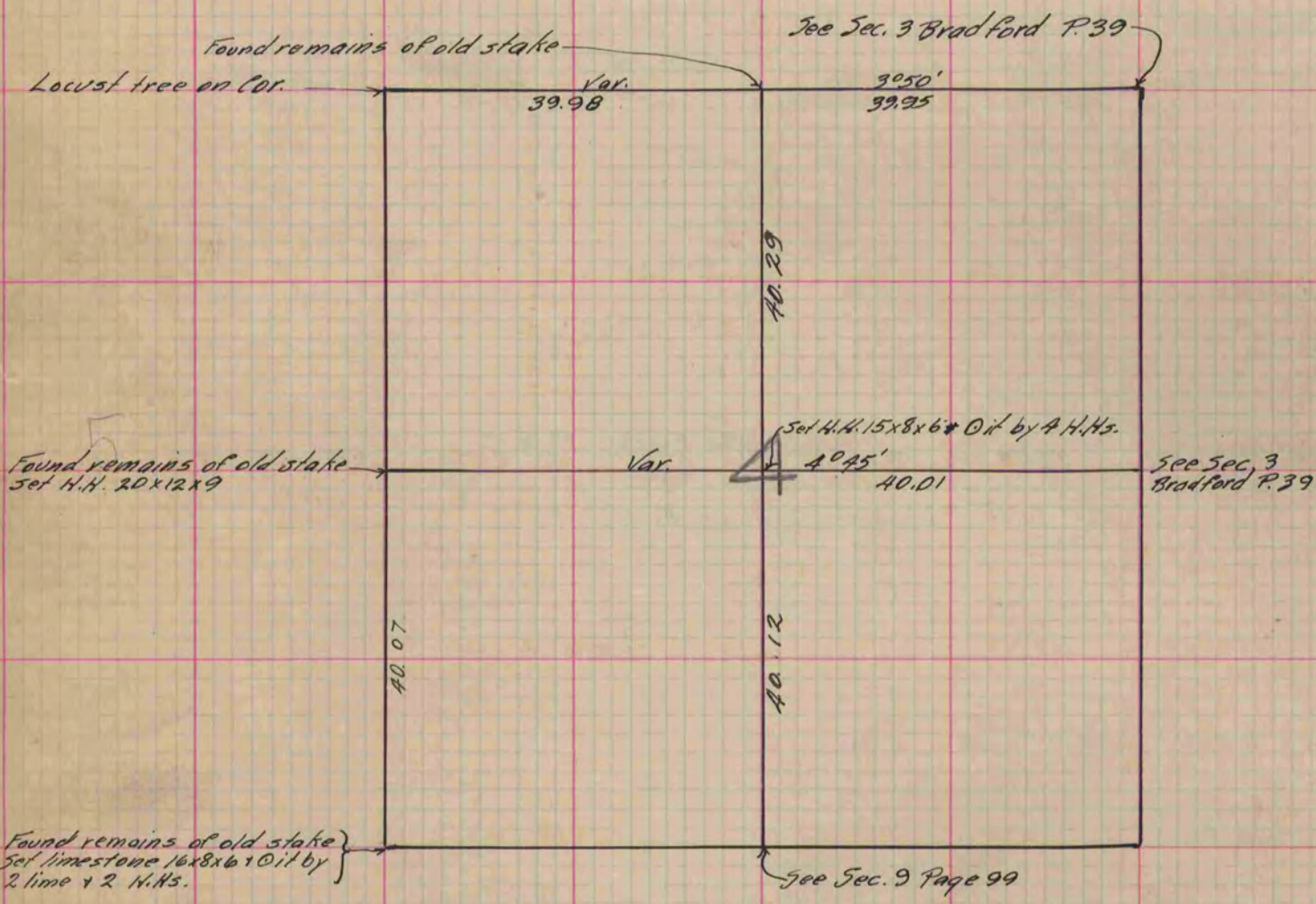
Rock County, Wisconsin, made May the 3rd 1878

**COUNTY BUILDING
IN CITY OF BELOIT**

I hereby certify that the following is a correct record of said survey as made by me.

(Signed) Edward Ryger
ERB

County Surveyor.



Copied from P. 200 Vol. 2 Original County Surveyor's Records.