

PLAT AND RECORD

427

Of a Survey on Section 21 & 16 T 4 R 12 E. of the 4 P. M. in Fulton Township

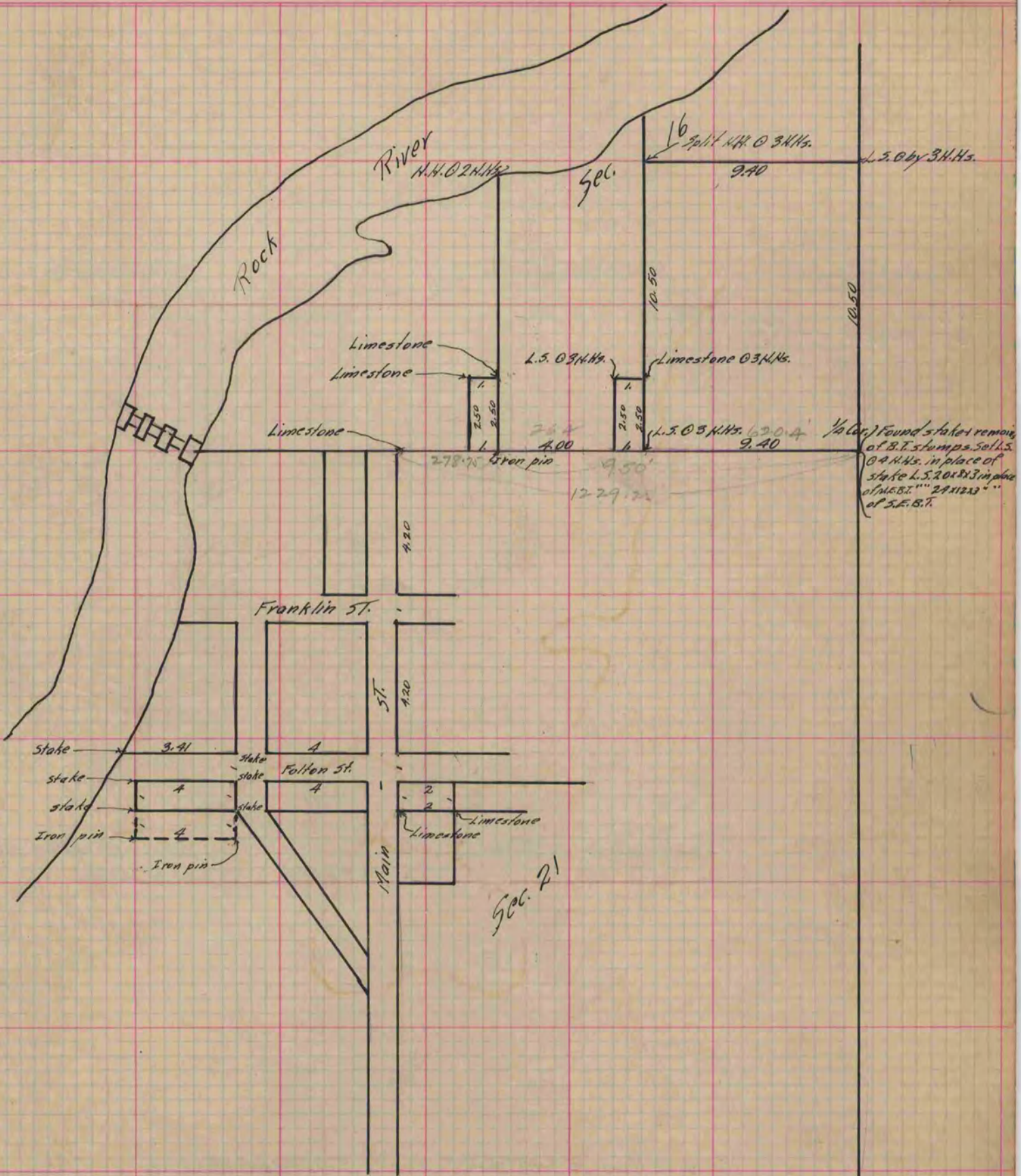
Rock County, Wisconsin, made Aug. the 28 & 30 1889

I hereby certify that the following is a correct record of said survey as made by me.

COUNTY BUILDING
IN CITY OF БЕЛОIT

(Signed) O.G. Bleedorn
R.A.H.

Dept. County Surveyor.



Copied from P. 344 Vol. 2 County Surveyor's Record.