

PLAT AND RECORD

Of a Survey on Section 3 T A R 12 E. of the 4 P. M. in Fulton Township

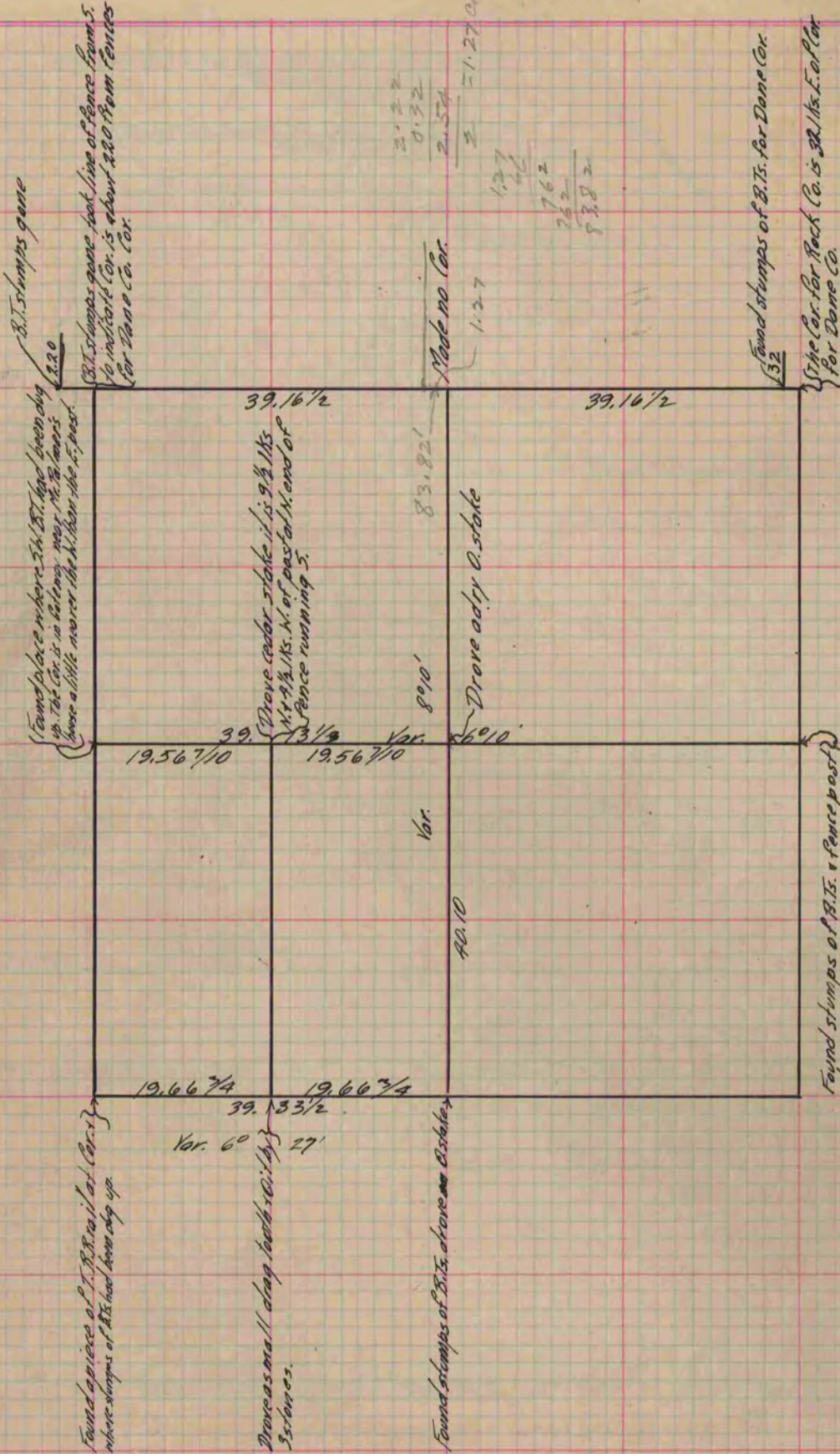
Rock County, Wisconsin, made May 30th + the 31st 1881

I hereby certify that the following is a correct record of said survey as made by me.

COUNTY BUILDING
IN CITY OF БЕЛОIT

(Signed) R. K. Lee
C.M.S.

County Surveyor.



Copied from P. 267 Vol. 2 County Surveyor's Record.