

PLAT AND RECORD

Of a Survey on Section 22 T 3 R 14 E. of the 4 P. M. in Johnstown Township

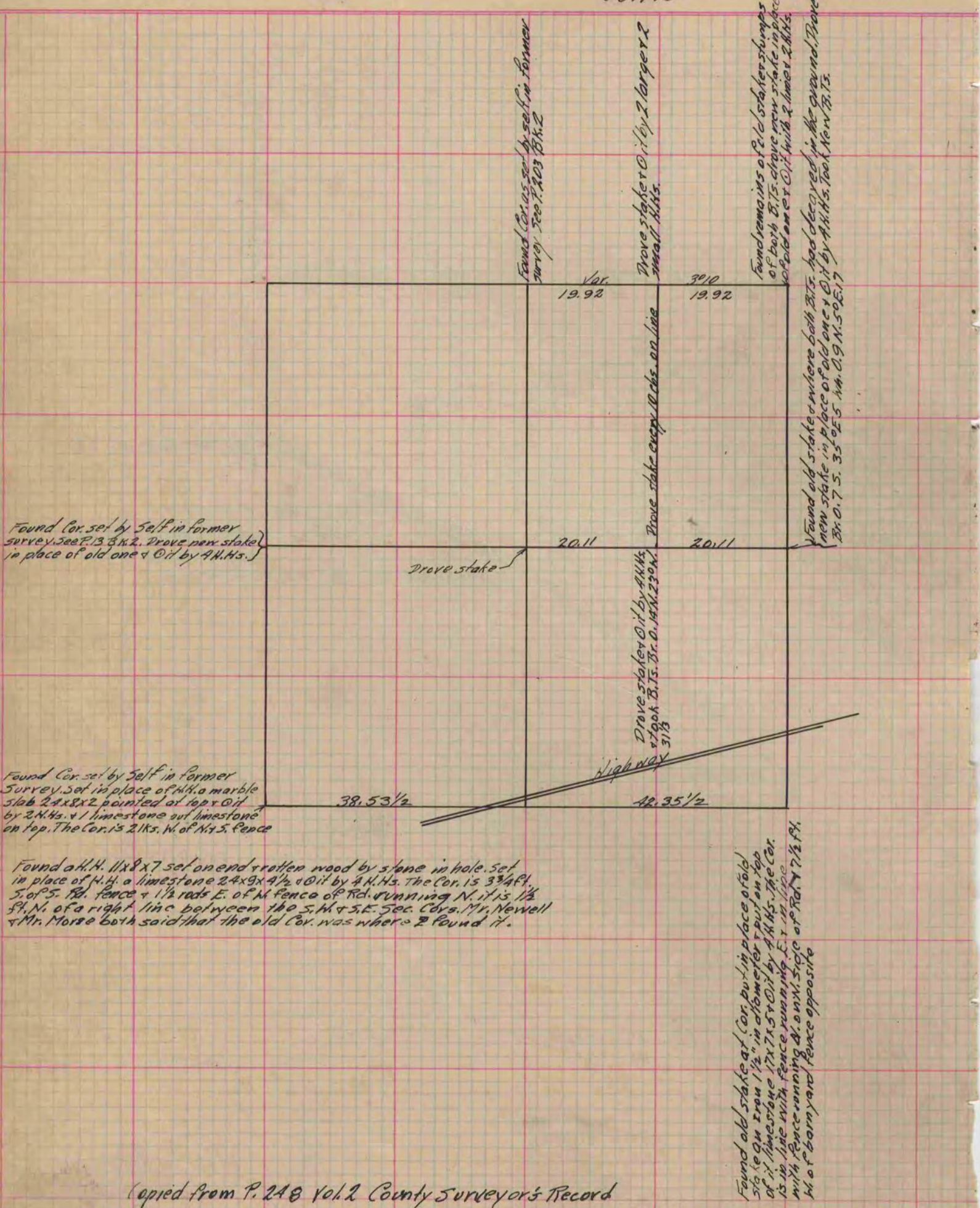
Rock County, Wisconsin, made December the 11th 1883

I hereby certify that the following is a correct record of said survey as made by me.

**COUNTY BUILDING
IN CITY OF БЕЛОIT**

(Signed) Edward Ruger
RMB

County Surveyor.



Copied from P. 248 Vol. 2 County Surveyor's Record