

# PLAT AND RECORD

Of a Survey on Section 30 T / R 13 E. of the 4 P. M. in Turtle Township

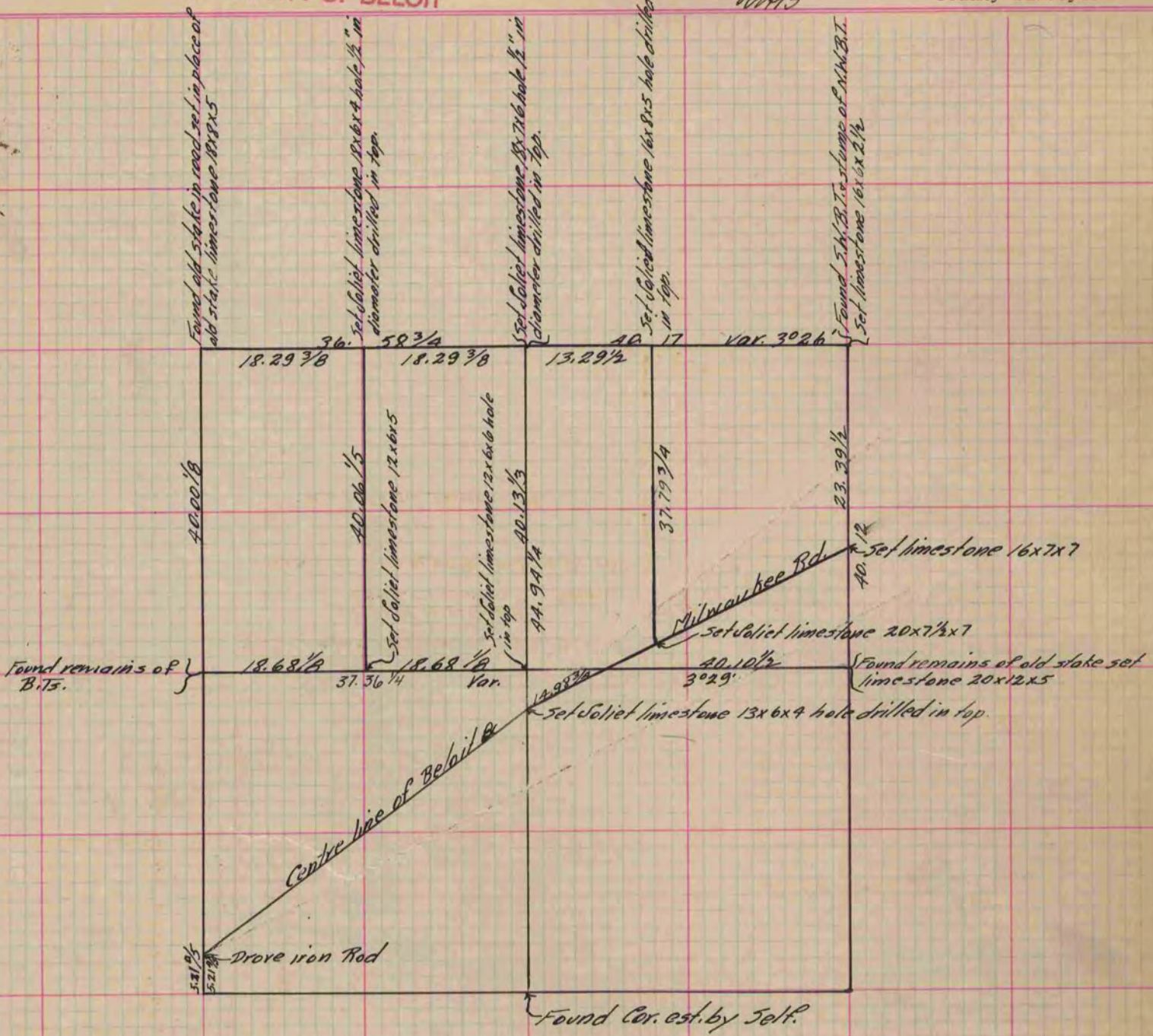
Rock County, Wisconsin, made November the 19-26 1885  
March 4 1886

I hereby certify that the following is a correct record of said survey as made by me.

COUNTY BUILDING  
IN CITY OF БЕЛОIT

(Signed) Edward Ruger

County Surveyor.



COUNTY BUILDING  
IN CITY OF БЕЛОIT

Copied from P. 247 Vol. 2 County Surveyor's Record