

PG 149 JANESVILLE
REC DAB 12/9/75

PLAT AND RECORD

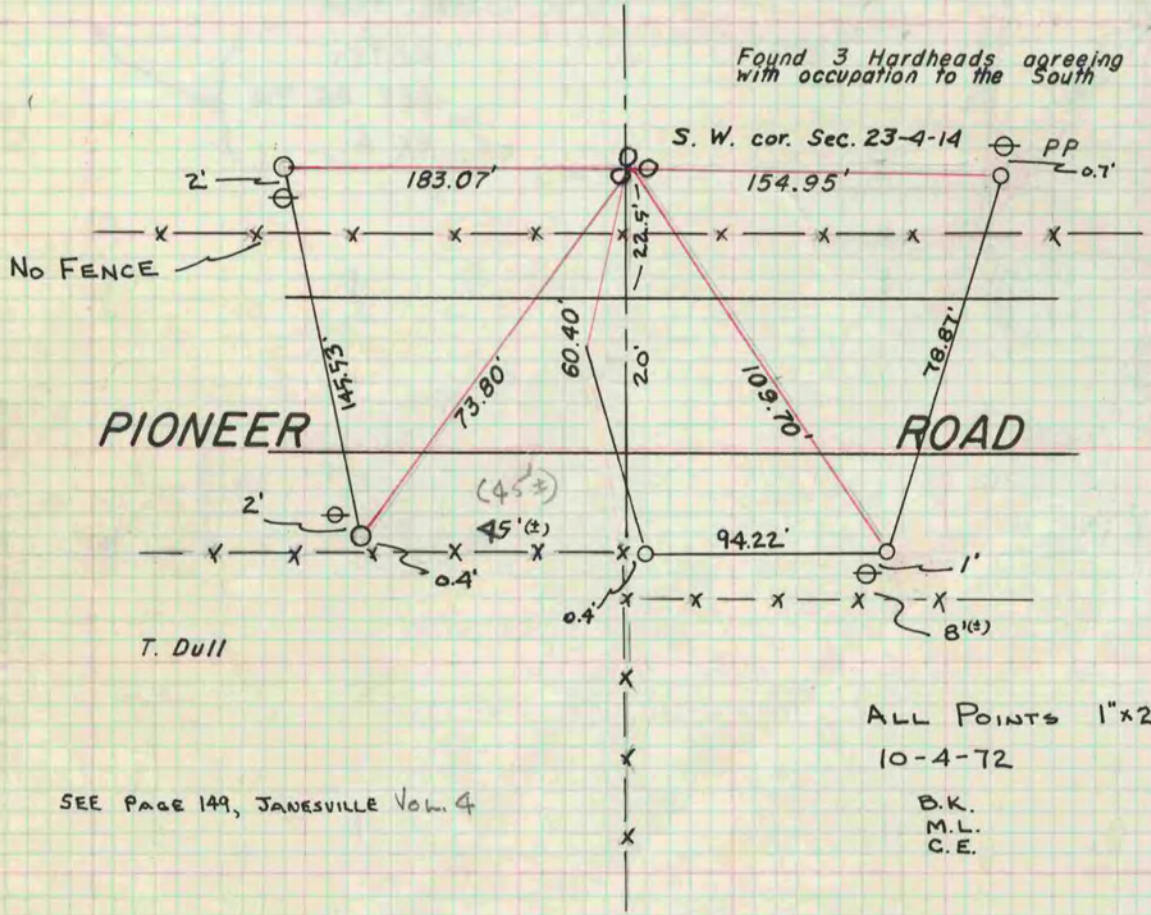
Of a Survey on Section 23 T 4 R 14 E. of the 4 P. M. in LIMA Township

Rock County, Wisconsin, made October the 4th 1972

I hereby certify that the following is a correct record of said survey as made by me.

Hugh De
County Surveyor.

COUNTY BUILDING
IN CITY OF BELOIT



SEE PAGE 149, JANESVILLE Vol. 4

ALL POINTS 1"x24" PIPES
10-4-72
B.K.
M.L.
C.E.