

PLAT AND RECORD

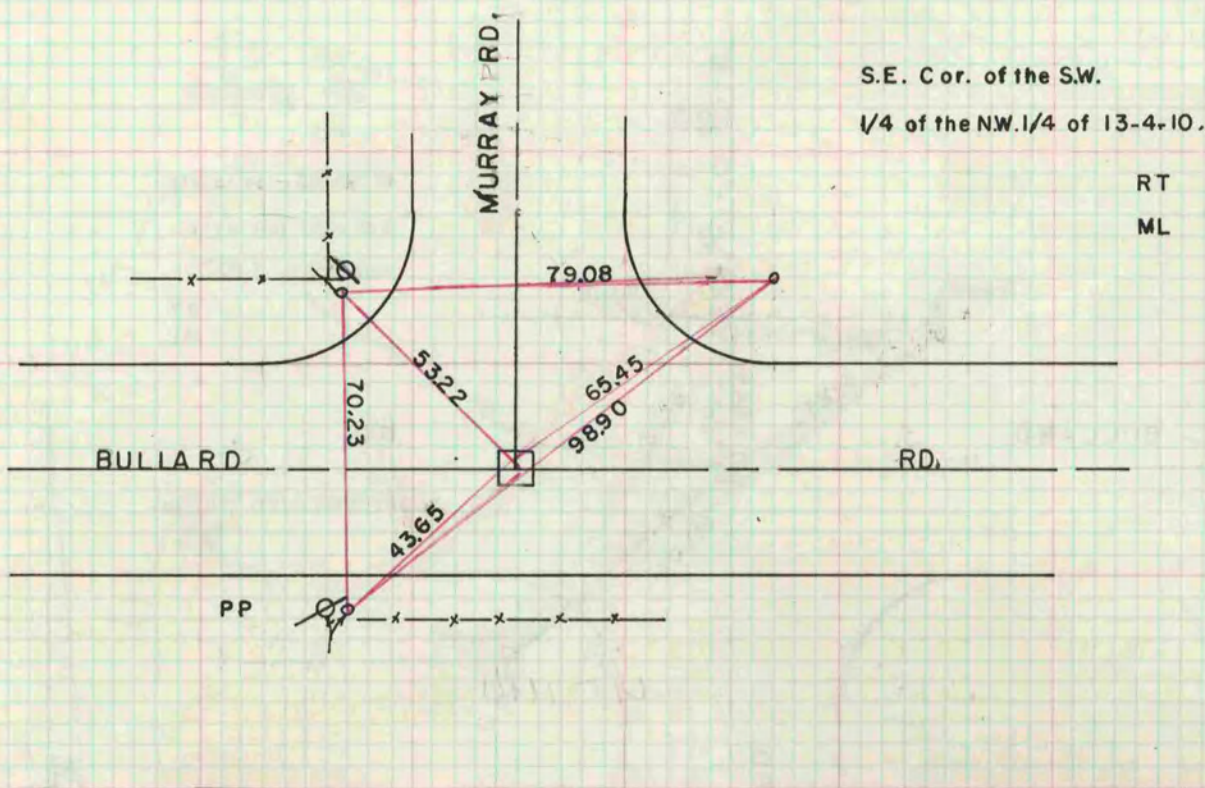
439

Of a Survey on Section 30 T 4 R 10 E. of the 4 P. M. in PORTER UNION Township
 Rock County, Wisconsin, made the 1970

I hereby certify that the following is a correct record of said survey as made by me.

COUNTY BUILDING
 IN CITY OF BELOIT

R. B. Batteman
 County Surveyor.



See Vol. A.P. 493
 For RE-REFERENCES
 4/5/71

