

# PLAT AND RECORD

487

Of a Survey on Section 27 T 3 R 12 E. of the 4 P. M. in Janesville Township

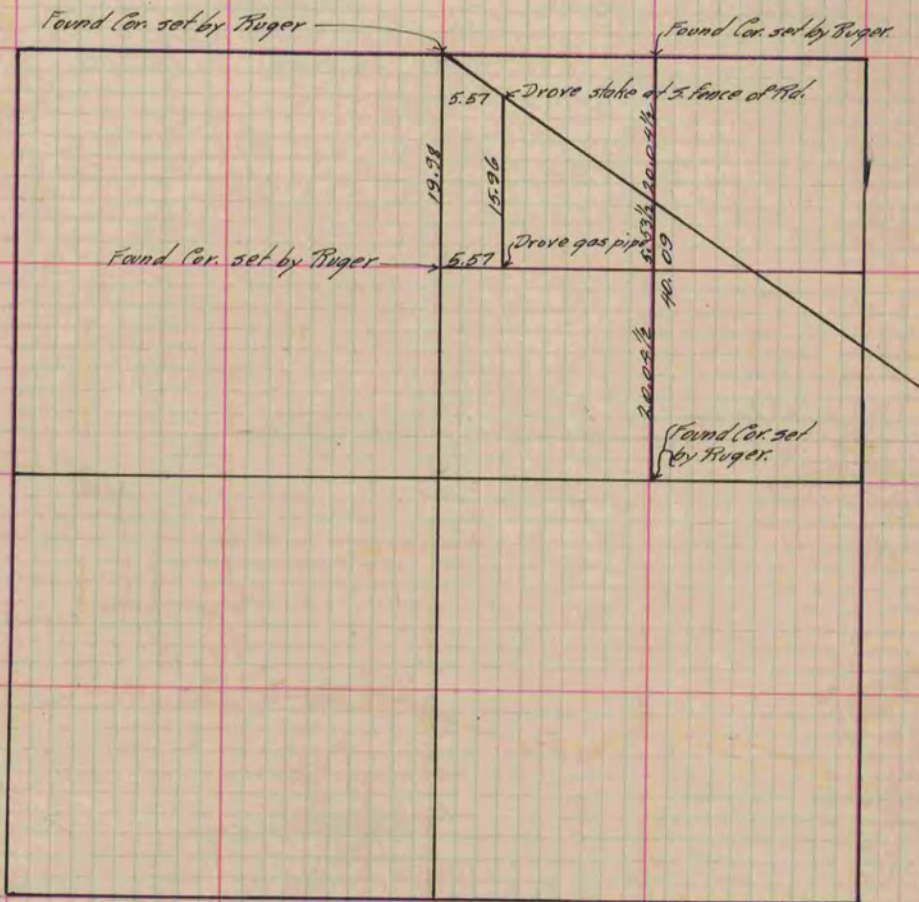
Rock County, Wisconsin, made April the 2 1894

I hereby certify that the following is a correct record of said survey as made by me.

(Signed) O. G. Bleedorn  
O. G. B.

County Surveyor.

COUNTY BUILDING  
IN CITY OF BELOIT



Copied from P. 377 Vol. 2 County Surveyor's Record