

# PLAT AND RECORD

Of a Survey on Section 9 T 1 R 11 E. of the 4 P. M. in Newark Township  
Rock County, Wisconsin, made January the 6<sup>th</sup> 1882

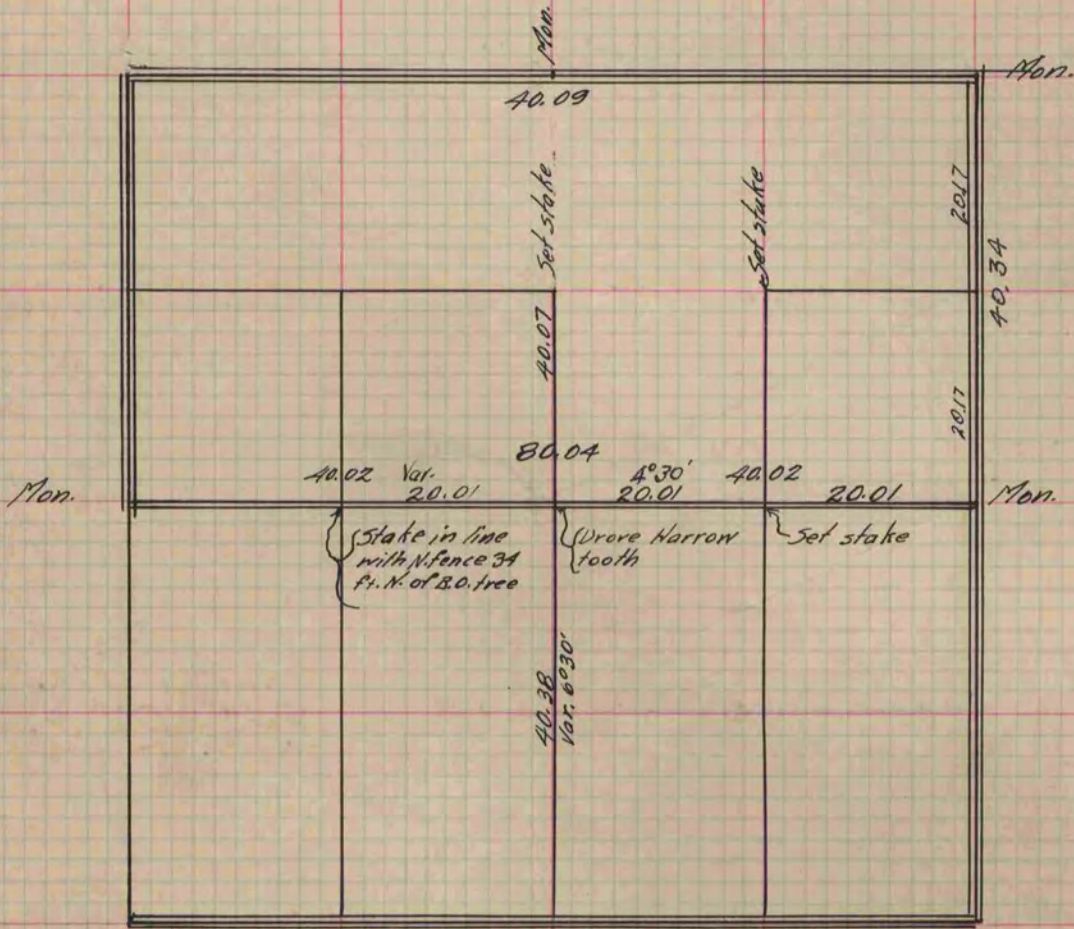
I hereby certify that the following is a correct record of said survey as made by me.

COUNTY BUILDING  
IN CITY OF БЕЛОIT

(Signed) J. F. Holmes  
RAB

County Surveyor.

*Sec. 9 Newark*



The above is a record plat of a survey made by me on Sec. 9 in Newark  
Jan. 6 - 1882  
J. F. Holmes Co. Surveyor.

Copied from P. 282 Vol. 2 County Surveyor's Record.