

PLAT AND RECORD

Of a Survey on Section 5 T 2 R 13 E. of the 4 P. M. in La Prairie Township

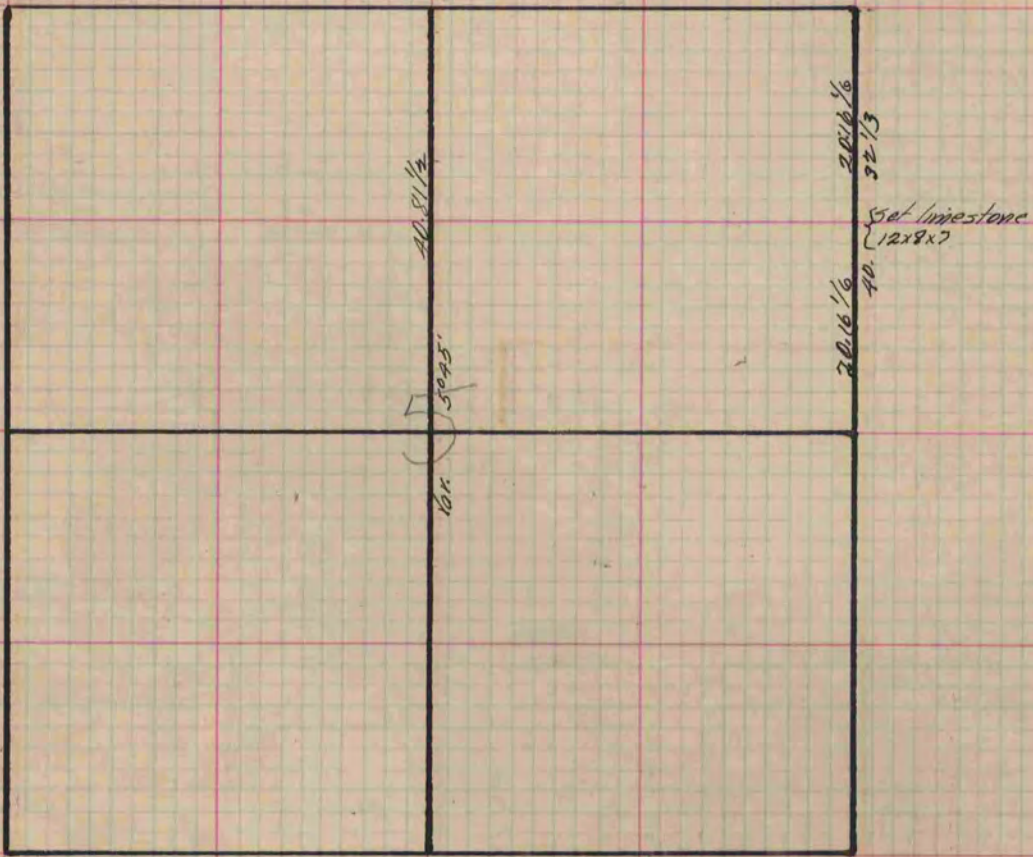
Rock County, Wisconsin, made _____ the _____ 19

I hereby certify that the following is a correct record of said survey as made by me.

COUNTY BUILDING
IN CITY OF BELOIT

(Signed) Edward Ruger
RMR

County Surveyor.



Copied from P. 290 Vol. 2 County Surveyor's Record.