

PLAT AND RECORD

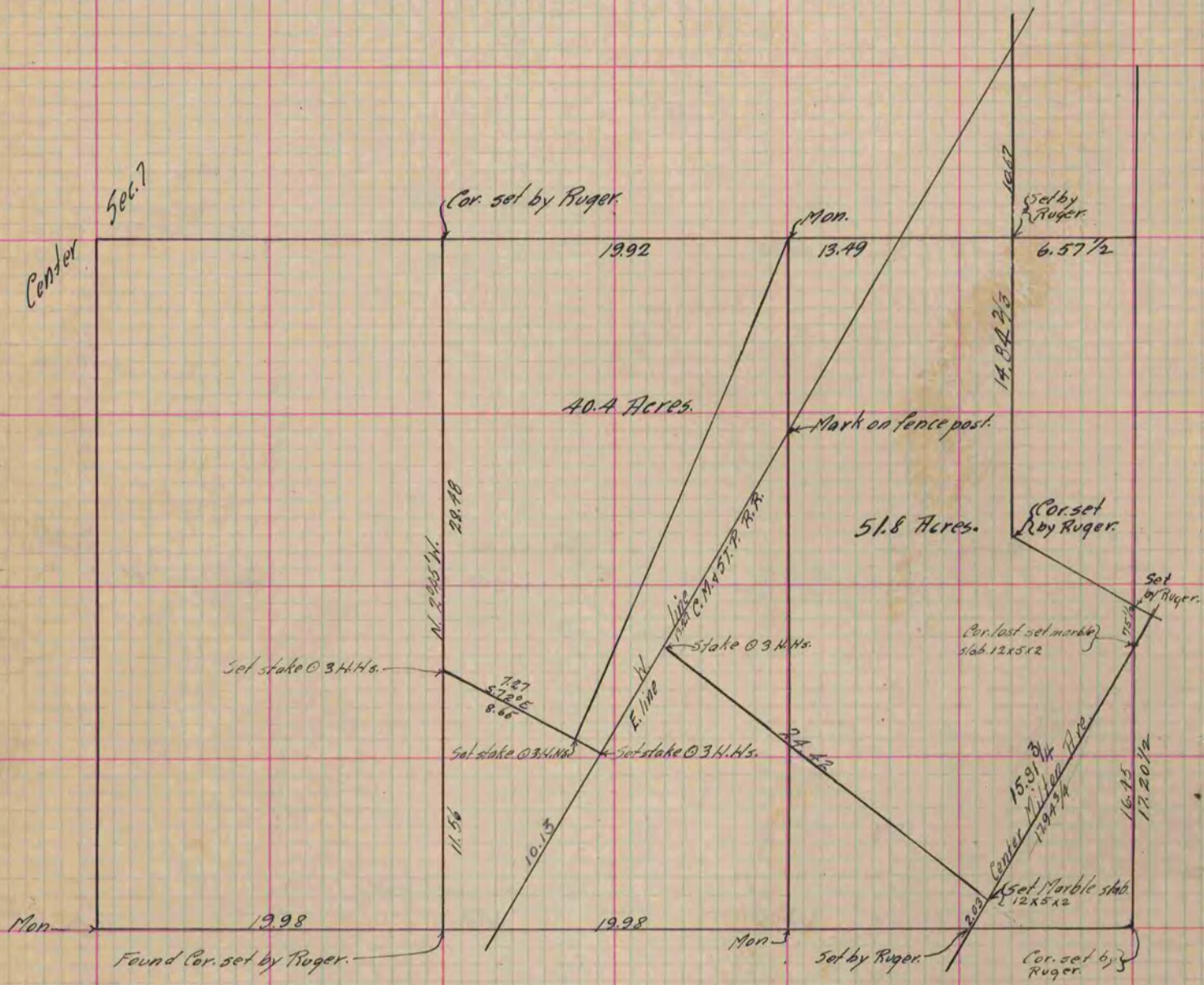
Of a Survey on Section ^{5E/4} 7 T 3 R 13 E. of the 4 P. M. in Harmony Township
 4 W. 1/4 - 3 W. 1/4 8
 Rock County, Wisconsin, made Oct " " the 6 " " 1891

I hereby certify that the following is a correct record of said survey as made by me.

**COUNTY BUILDING
 IN CITY OF BELOIT**

(Signed) O. C. Blood or n
AMB

Dep. County Surveyor.



Copied from P. 357 Vol. 2 County Surveyor's Record.