

# PLAT AND RECORD

Of a Survey on <sup>NE 1/4</sup> Section 3 T 2 R 12 E. of the 4 P. M. in Rock Township

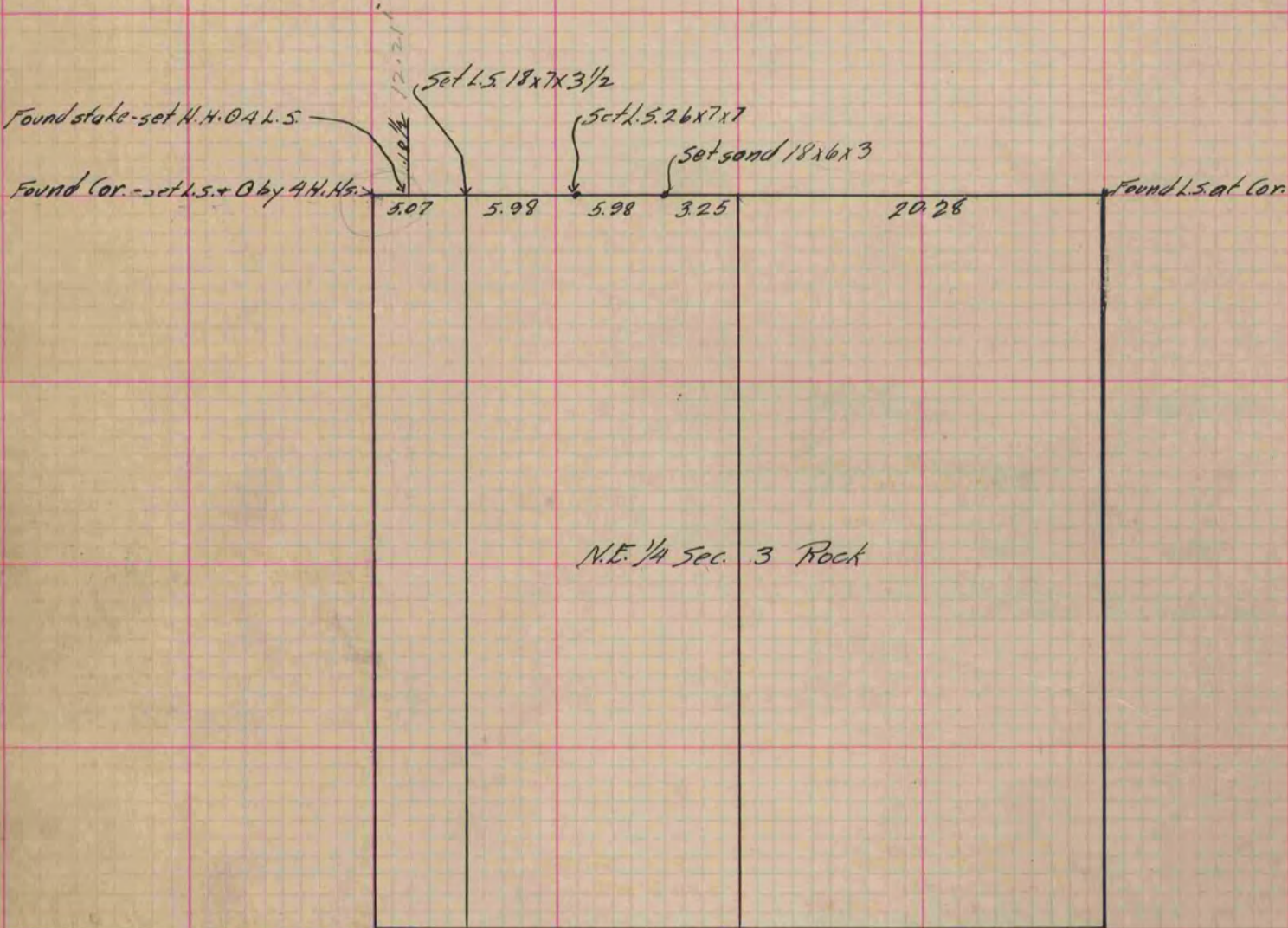
Rock County, Wisconsin, made Apr. the 19 1892

I hereby certify that the following is a correct record of said survey as made by me.

COUNTY BUILDING  
IN CITY OF BELOIT

(Signed) O. G. Bleedorn  
O. G. B.

County Surveyor.



Copied From P. 366 Vol. 2 County Surveyor's Record.