

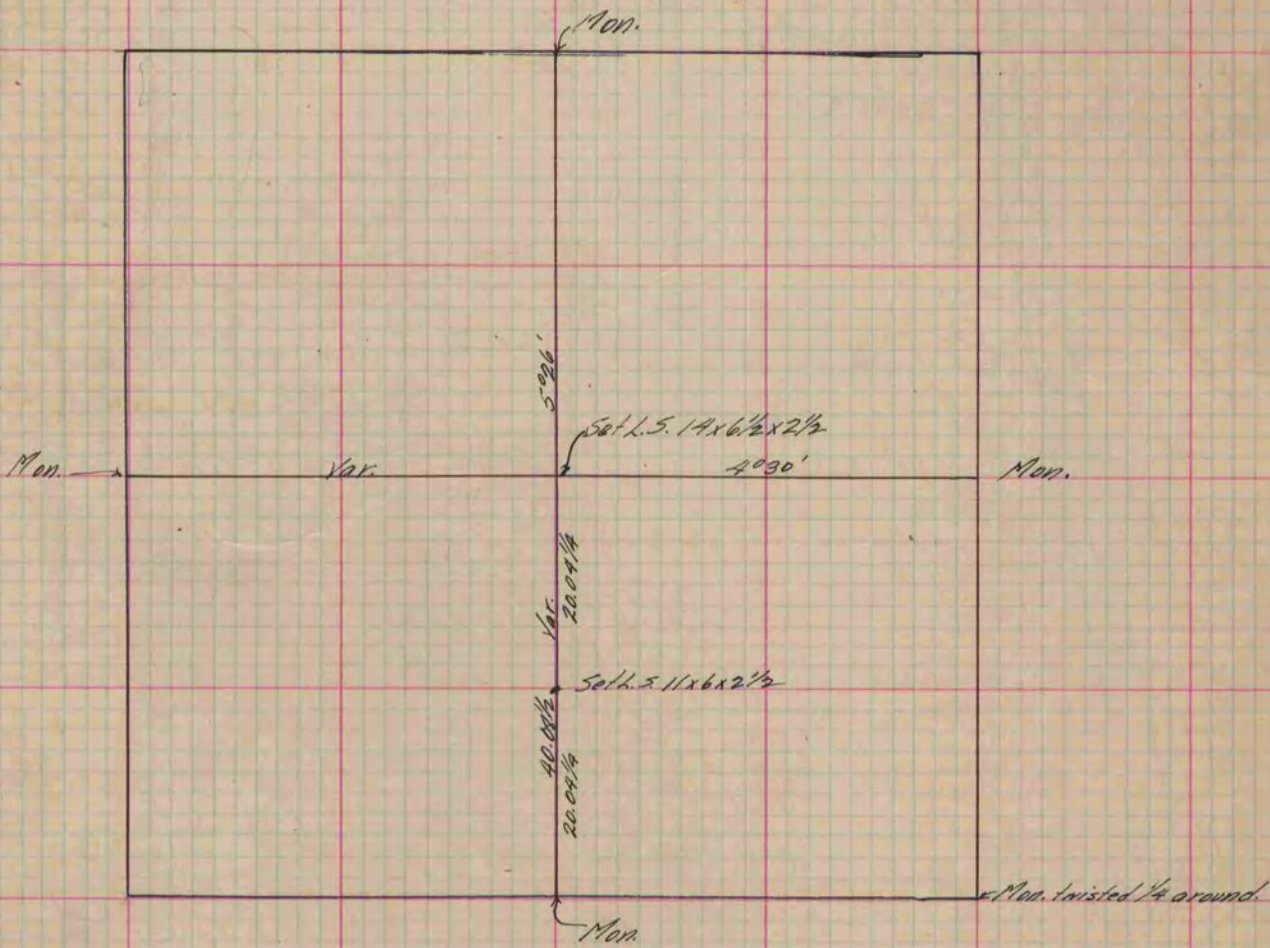
# PLAT AND RECORD

Of a Survey on Section 30 T 2 R 13 E. of the 4 P. M. in La Prairie Township  
Rock County, Wisconsin, made Sept the 22 1891

I hereby certify that the following is a correct record of said survey as made by me.

COUNTY BUILDING  
IN CITY OF BELOIT

(Signed) O. G. Bleedorn  
RHB Dep. County Surveyor.



*Copied from P. 357 Vol. 2 County Surveyor's Record.*