

PLAT AND RECORD

Of a Survey on Section 9 T 1 R 13 E. of the 4 P. M. in Turtle Township

Rock County, Wisconsin, made Sept the 1882

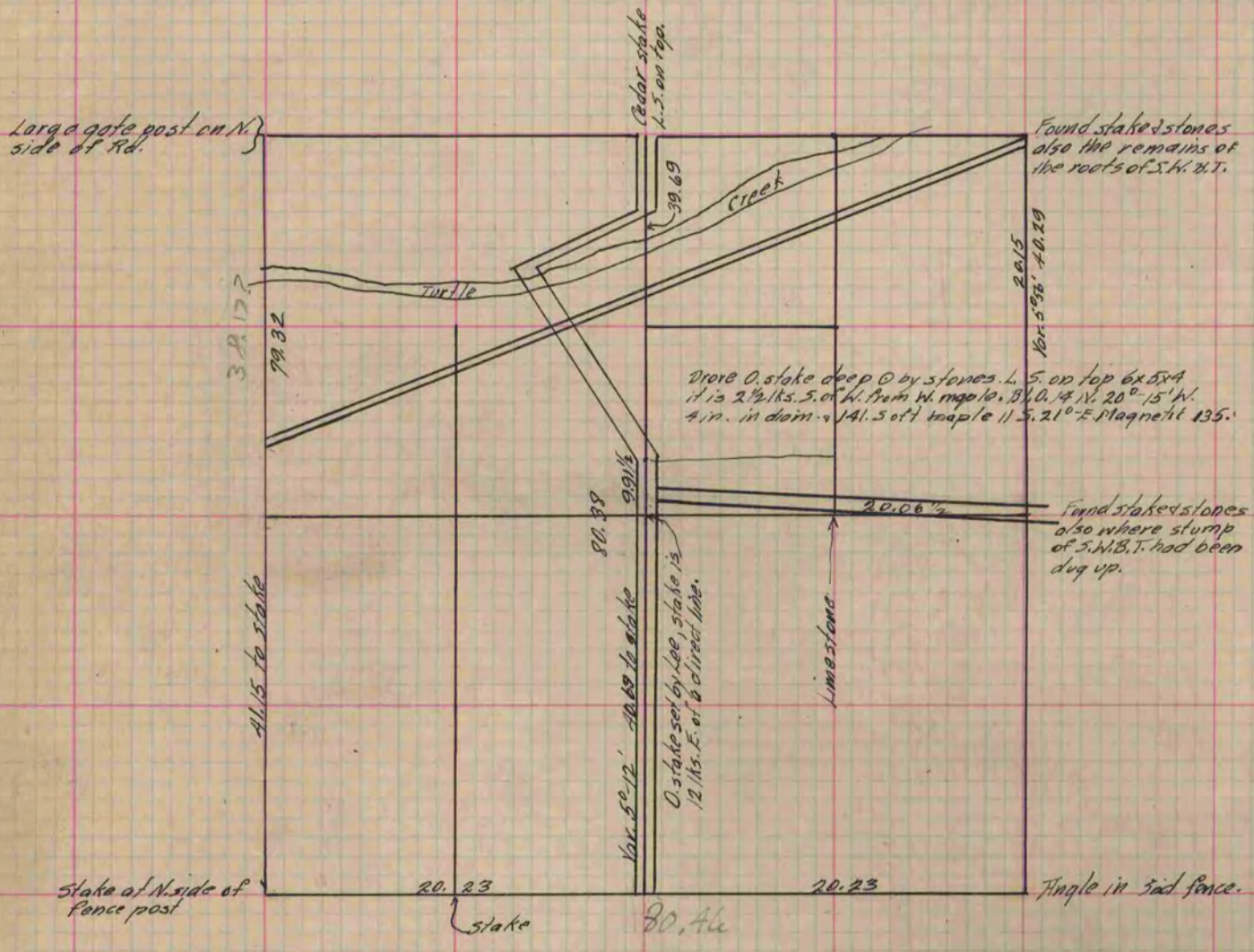
I hereby certify that the following is a correct record of said survey as made by me.

**COUNTY BUILDING
IN CITY OF БЕЛОIT**

(Signed) L. H. Holmes.
R.H.B.

County Surveyor.

Sec. 9 Turtle



Copied from P. 287 Vol 2 County Surveyor's Record.