

PLAT AND RECORD

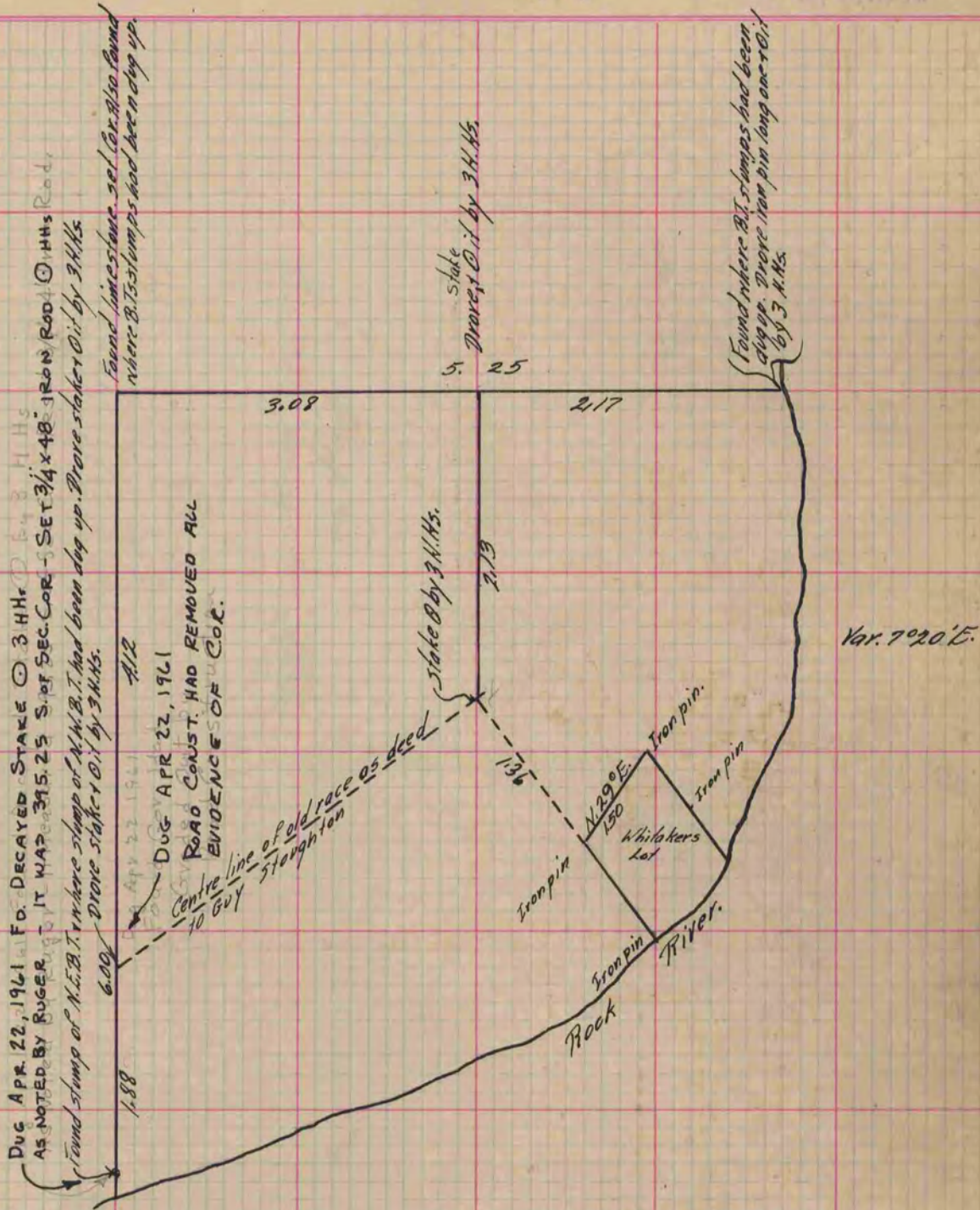
COUNTY BUILDING
IN CITY OF BELOIT

Of a Survey on Section 21 T A R 12 E. of the 4 P. M. in Fulton Township

Rock County, Wisconsin, made July the 10 1875

I hereby certify that the following is a correct record of said survey as made by me.

(Signed) *Edward Ruger*
County Surveyor.



At a point of intersection of the S. line of old race way with the E. line of the Whitaker lot drove stake, also drove witness stake 9 H.S. S. on Whitaker's E. line. Cut mark on the black smith shop to show the N.W. cor. of Whitaker Lot. At the intersection of the N. + S. lines of the old race way with the W. line of Sec. 21, Fulton, drove stakes. At the intersection of the N. + S. lines of the old race way with the line parallel to the W. line of Sec. 21, Fulton + 3.08 chs. E. there from drove stakes.

(Signed) *Edward Ruger*
County Surveyor.

Copied from P. 151 Vol. 2 County Surveyors Record.