

# PLAT AND RECORD

Of a Survey on Section 28 & 33 T 1 R 10 E. of the 4 P. M. in Avon Township

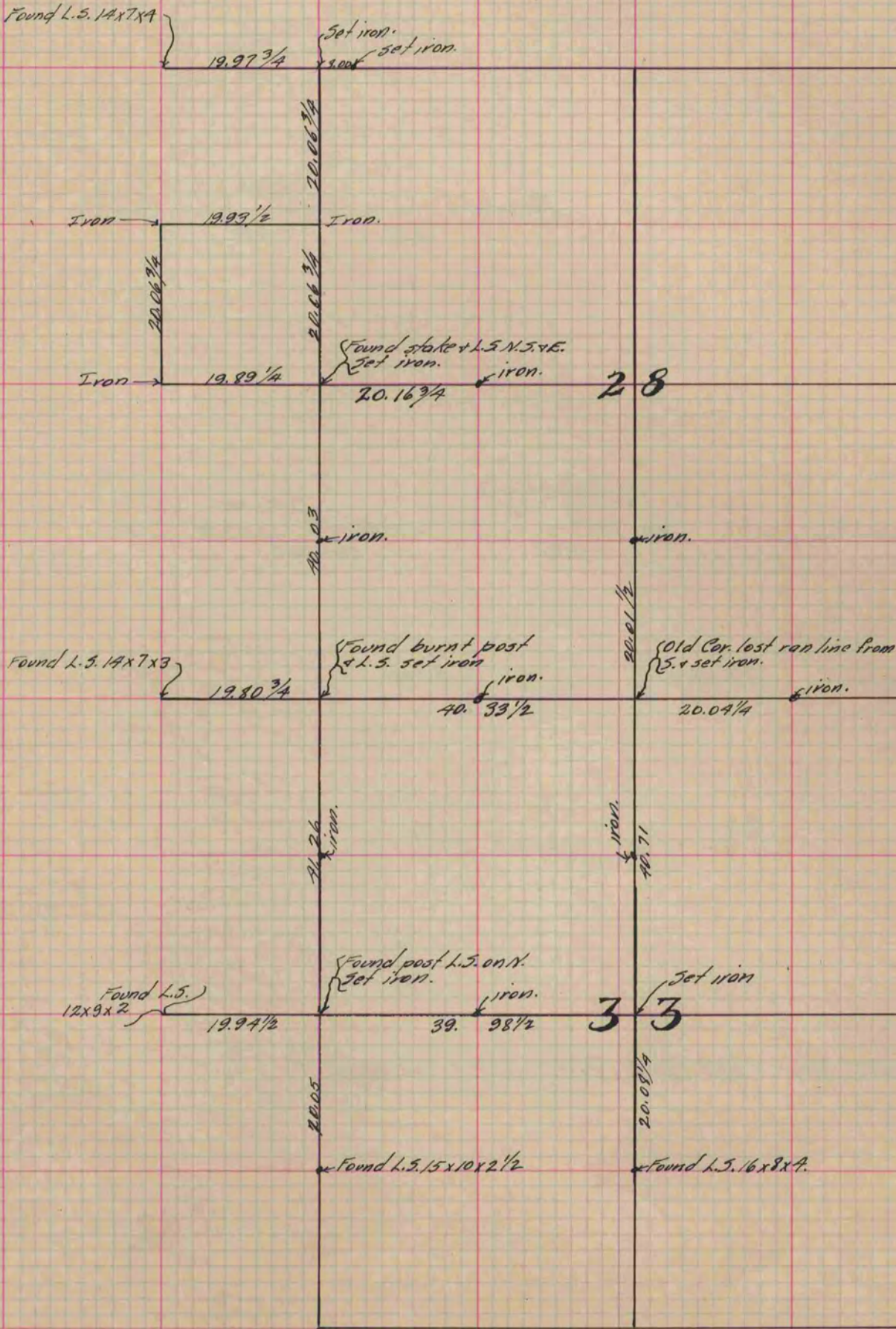
Rock County, Wisconsin, made May the 22 to 25 1900

I hereby certify that the following is a correct record of said survey as made by me.

COUNTY BUILDING  
IN CITY OF БЕЛОIT

(Signed) P. F. Brown  
P. F. BROWN

County Surveyor.



Copied from P. 391 Vol. 2 County Surveyor's Record.