

# PLAT AND RECORD

Of a Survey on Section 12 T 1 R 10 E. of the 4 P. M. in Avon Township

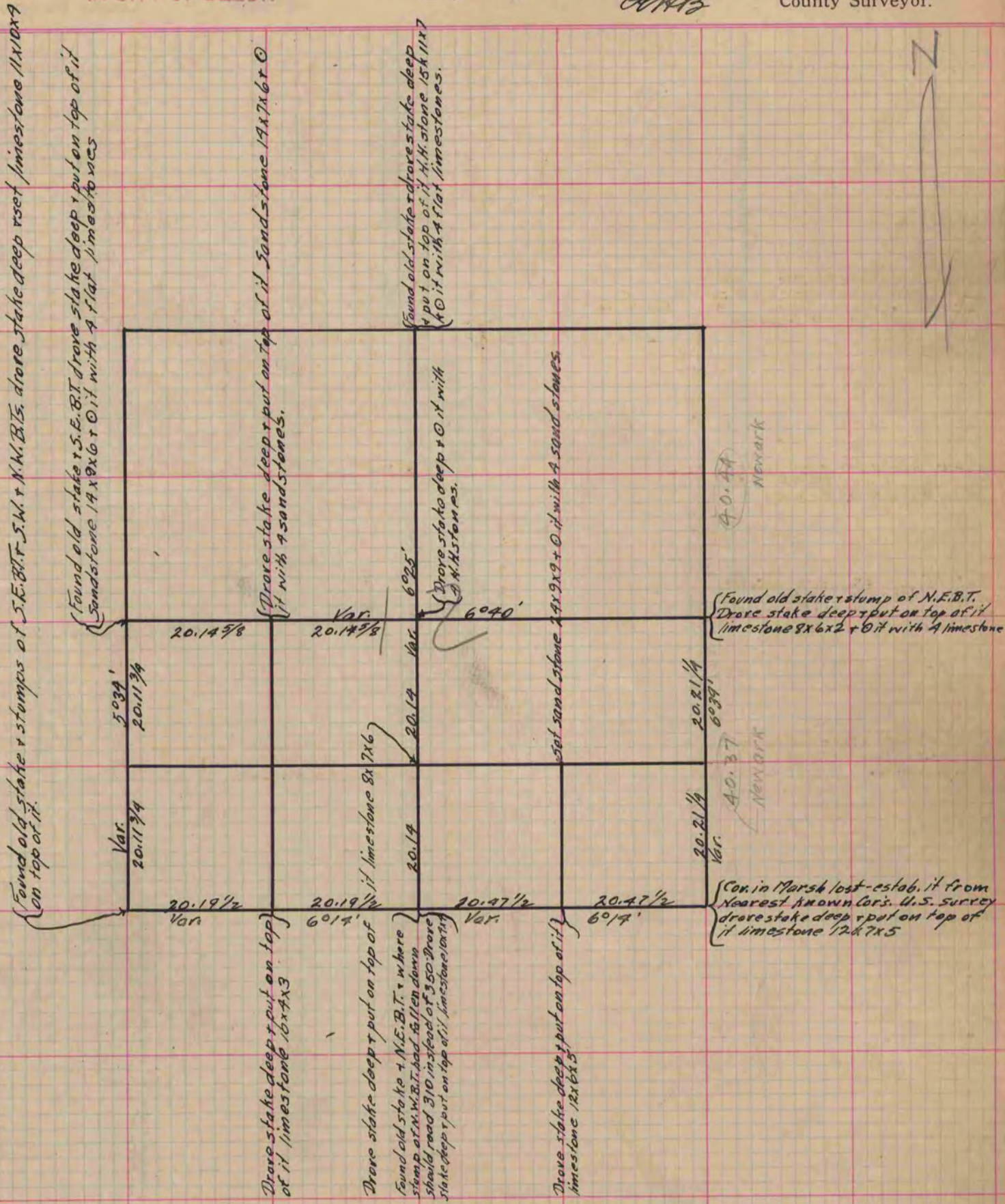
Rock County, Wisconsin, made May the 19+20 1871

I hereby certify that the following is a correct record of said survey as made by me.

**COUNTY BUILDING  
IN CITY OF БЕЛОIT**

*(Signed) Edward Roger*  
*E.R.R.*

County Surveyor.



*Copied from Page 40 Vol. 2. Original County Surveyor's Record.*