

PLAT AND RECORD

Of a Survey on Section 25 T 2 R 12 E. of the 4 P. M. in Rock Township

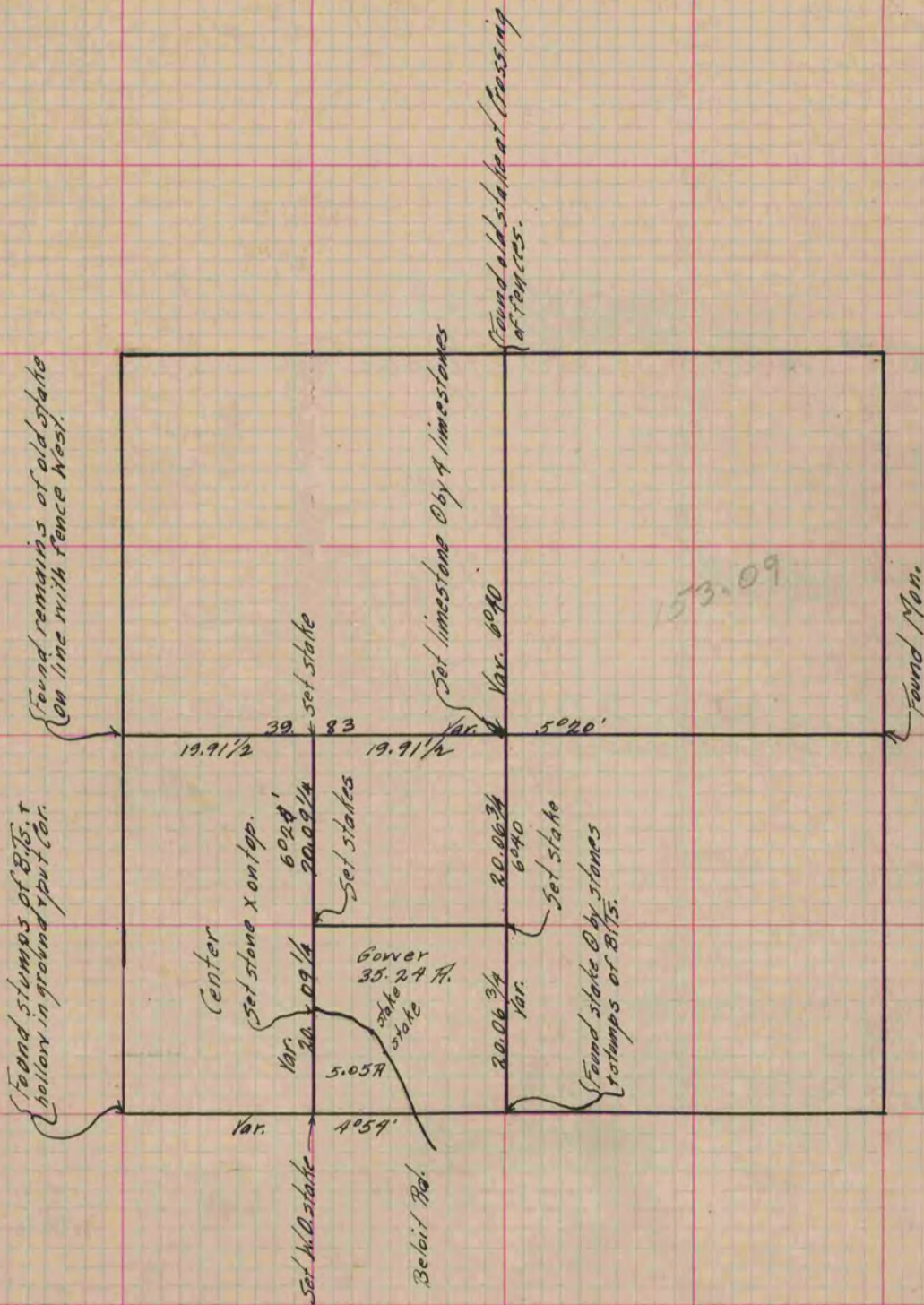
Rock County, Wisconsin, made May the 13, 17 + 18 1873

I hereby certify that the following is a correct record of said survey as made by me.

COUNTY BUILDING
IN CITY OF БЕЛОИТ

(Signed) R. K. Lee
RKL

Deputy
County Surveyor.



Copied from Page 57 Vol. 2 Original County Surveyor's Record.