

PLAT AND RECORD

Of a Survey on Section 2 T 2 R 12 E. of the 4 P. M. in Rock Township

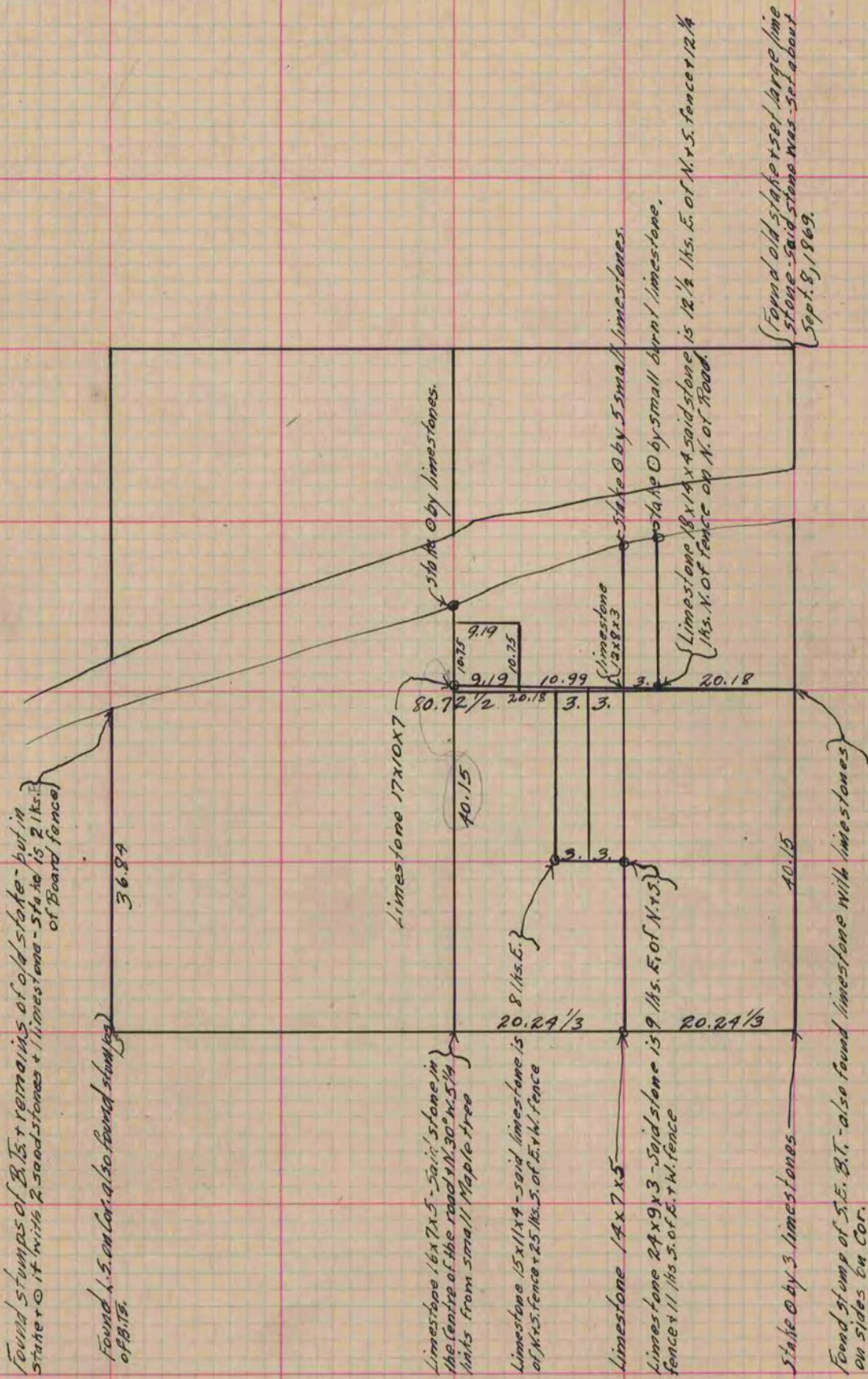
Rock County, Wisconsin, made December the 17-18-20+21 1869

I hereby certify that the following is a correct record of said survey as made by me.

COUNTY BUILDING
IN CITY OF BELOIT

(Signed) Edward Roger
R. A. B.

Deputy
County Surveyor.



Copied from Page 14 (upper 1/2) Vol. 2 Original County Surveyor's Record.