

PLAT AND RECORD

Of a Survey on Section 31 6 T 4 3 R 13 13 E. of the 4 P. M. in MILTON HARMONY Township

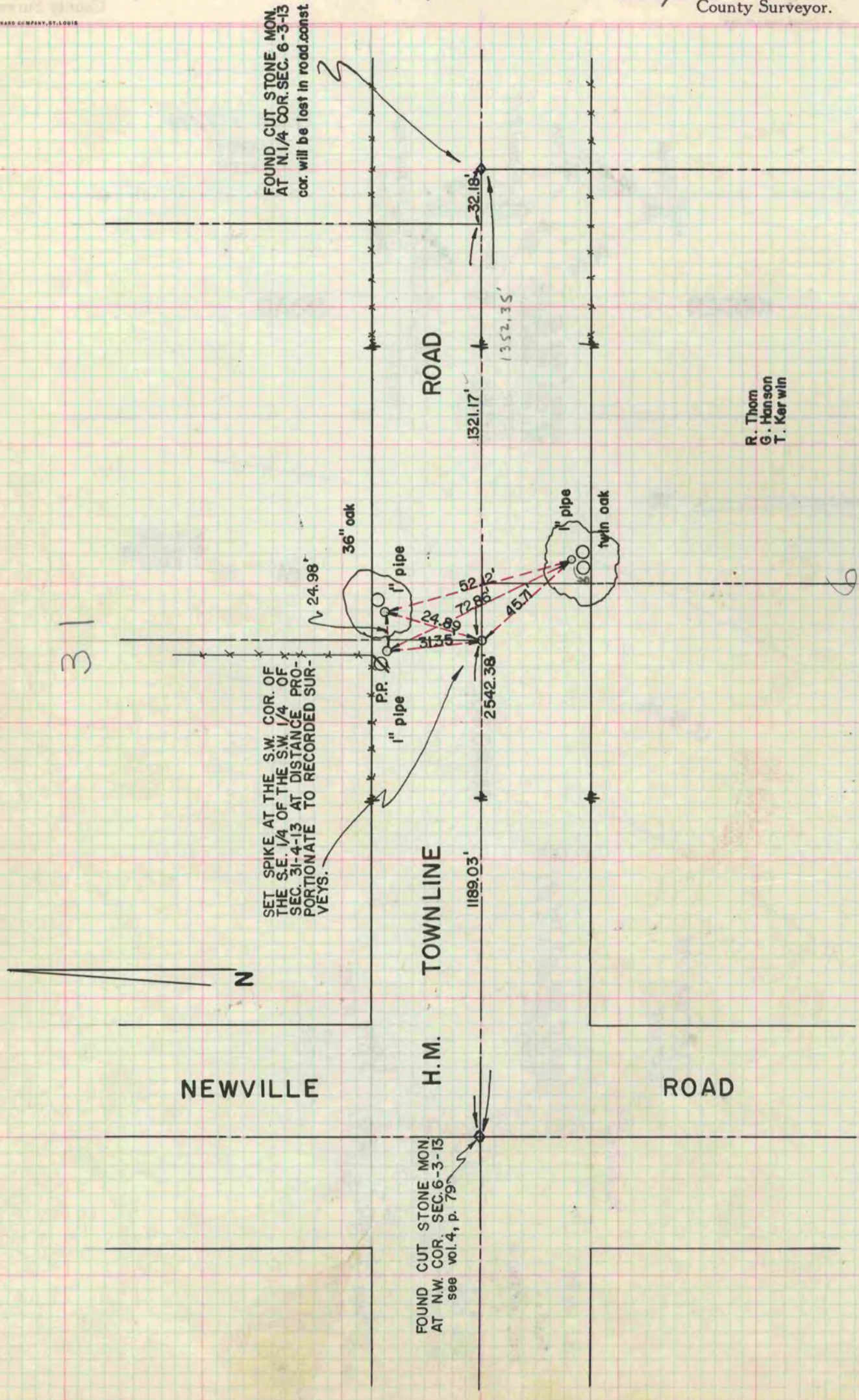
Rock County, Wisconsin, made DECEMBER 28 the 27th 1960

I hereby certify that the following is a correct record of said survey as made by me.

COUNTY BUILDING
IN CITY OF БЕЛОИТ

R. B. Bostman
County Surveyor.

THE GEO. D. BARBARO COMPANY, ST. LOUIS



R. Thom
G. Hanson
T. Kerwin