

# PLAT AND RECORD

Of a Survey on Section 34 T 2 R 11 E. of the 4 P. M. in Plymouth Township

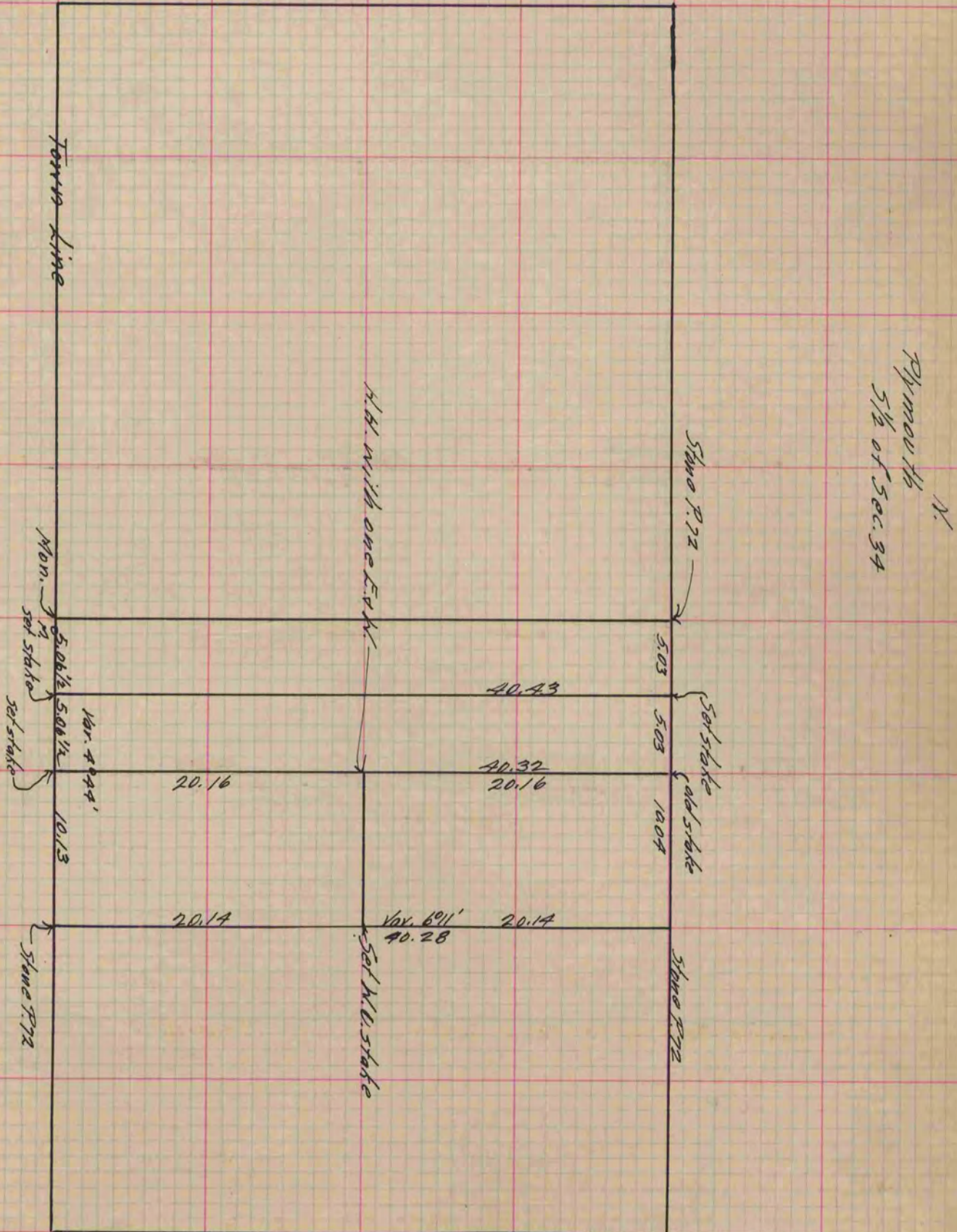
Rock County, Wisconsin, made December the 11<sup>th</sup> 1881

I hereby certify that the following is a correct record of said survey as made by me.

COUNTY BUILDING  
IN CITY OF BELOIT

(Signed) John F. Holmes  
J.F.H.

County Surveyor.



Copied from P. 277 Vol 2 County Surveyors Record.