

PLAT AND RECORD

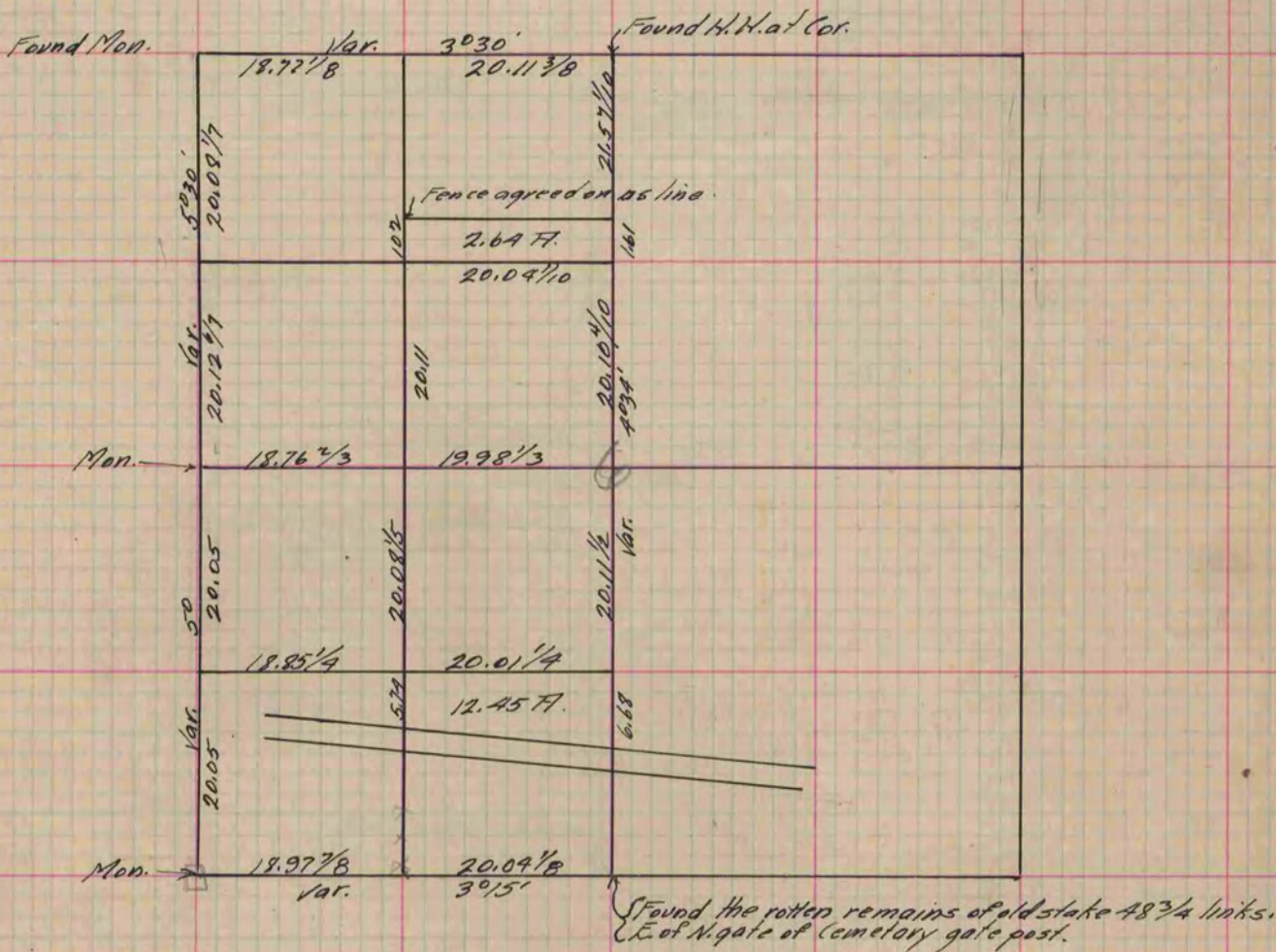
Of a Survey on Section 6 T 2 R 14 E. of the 4 P. M. in Bradford Township
 Rock County, Wisconsin, made June the 7th + 8th 1887

I hereby certify that the following is a correct record of said survey as made by me.

COUNTY BUILDING
 IN CITY OF БЕЛОИТ

(Signed) R. K. Lee
R. K. Lee

Dept. _____
 County Surveyor.



Copied from P. 317 Vol. 2 County Surveyor's Record.