

PLAT AND RECORD

Of a Survey on Section 16 T 4 R 12 E. of the 4 P. M. in Fulton Township

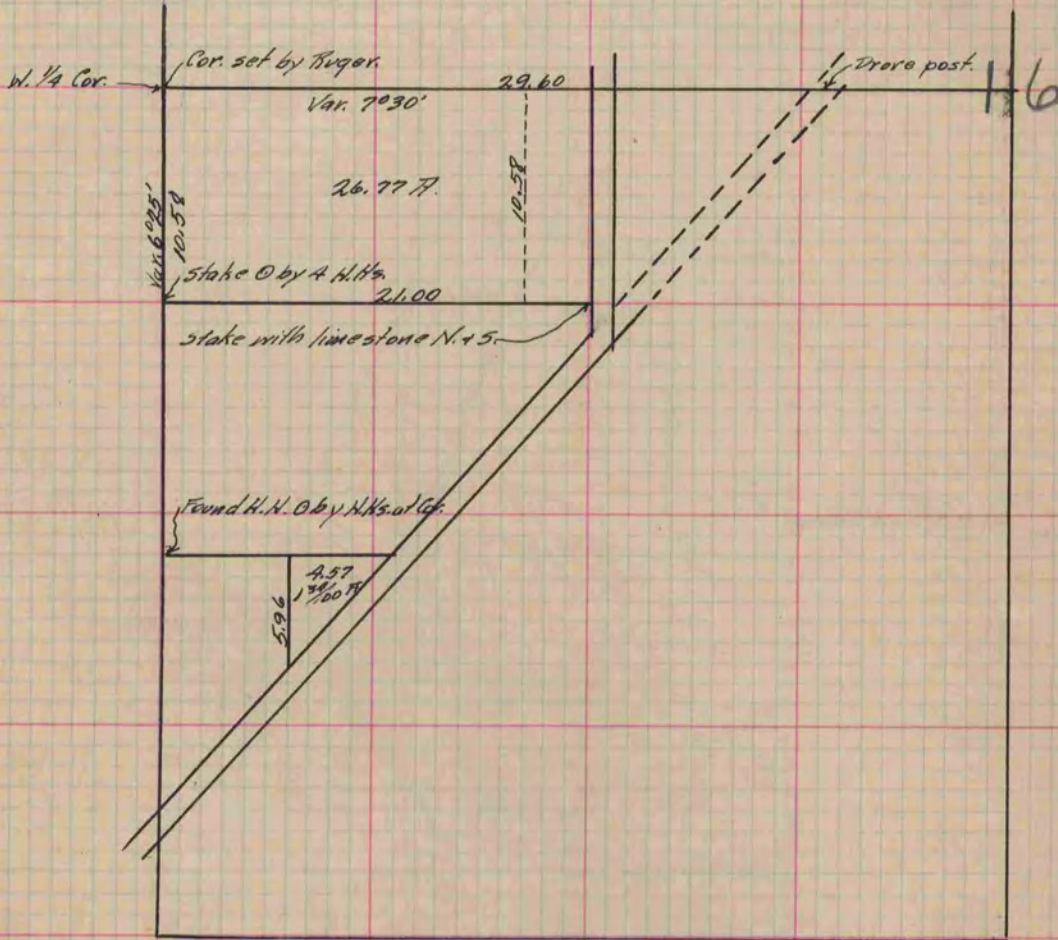
Rock County, Wisconsin, made November the 23rd & 24th 1883

**COUNTY BUILDING
IN CITY OF БЕЛОIT**

I hereby certify that the following is a correct record of said survey as made by me.

(Signed) R. K. Lee
R. K. Lee

Pop. County Surveyor.



Copied from P. 292 Vol. 2 County Surveyor's Record.