

PLAT AND RECORD

Of a Survey on Section 27 T 3 R 12 E. of the 4 P. M. in Sanesville Township

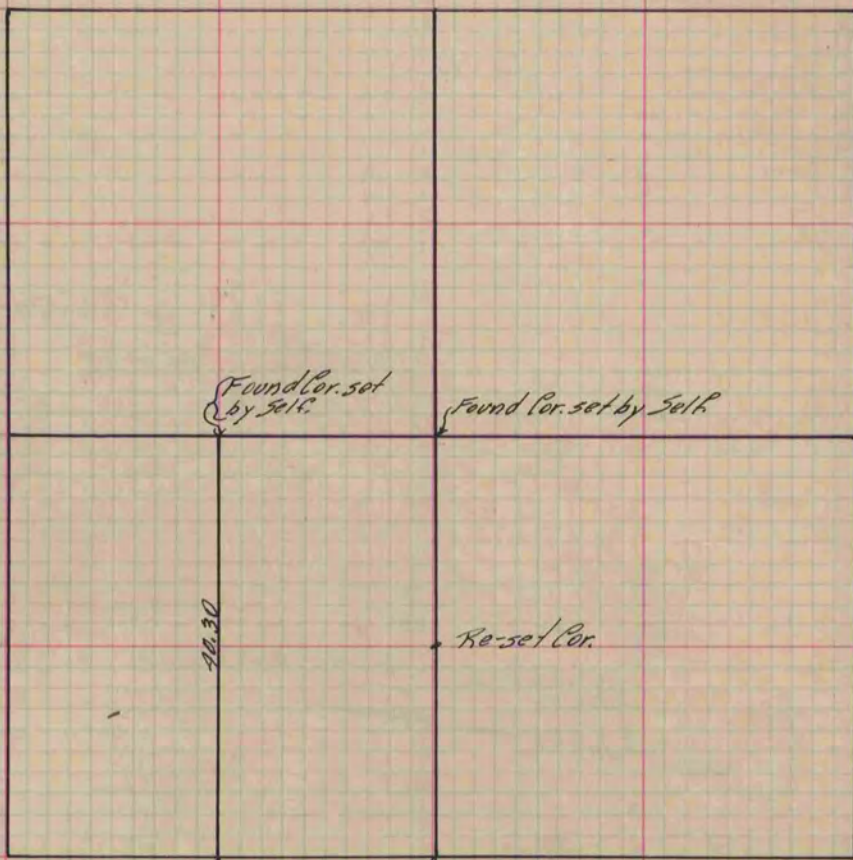
Rock County, Wisconsin, made November the 6th 1882

I hereby certify that the following is a correct record of said survey as made by me.

COUNTY BUILDING
IN CITY OF BELOIT

(Signed) Edward Riger
RAH

County Surveyor.



Found Cor. set by Self.

Found Cor. set by Self. Limestone O by A.H.H. - Set on top Limestone 18x9x5 + put N.H.s. on N. & S. sides.

Copied from P. 321 Vol. 2 County Surveyor's Record.