

# PLAT AND RECORD

Of a Survey on Sections <sup>31+32</sup> ~~41+5~~ T <sup>3</sup> ~~2~~ R <sup>14</sup> ~~14~~ E. of the 4 P. M. in <sup>Scholes town</sup> ~~Bradford~~ Township

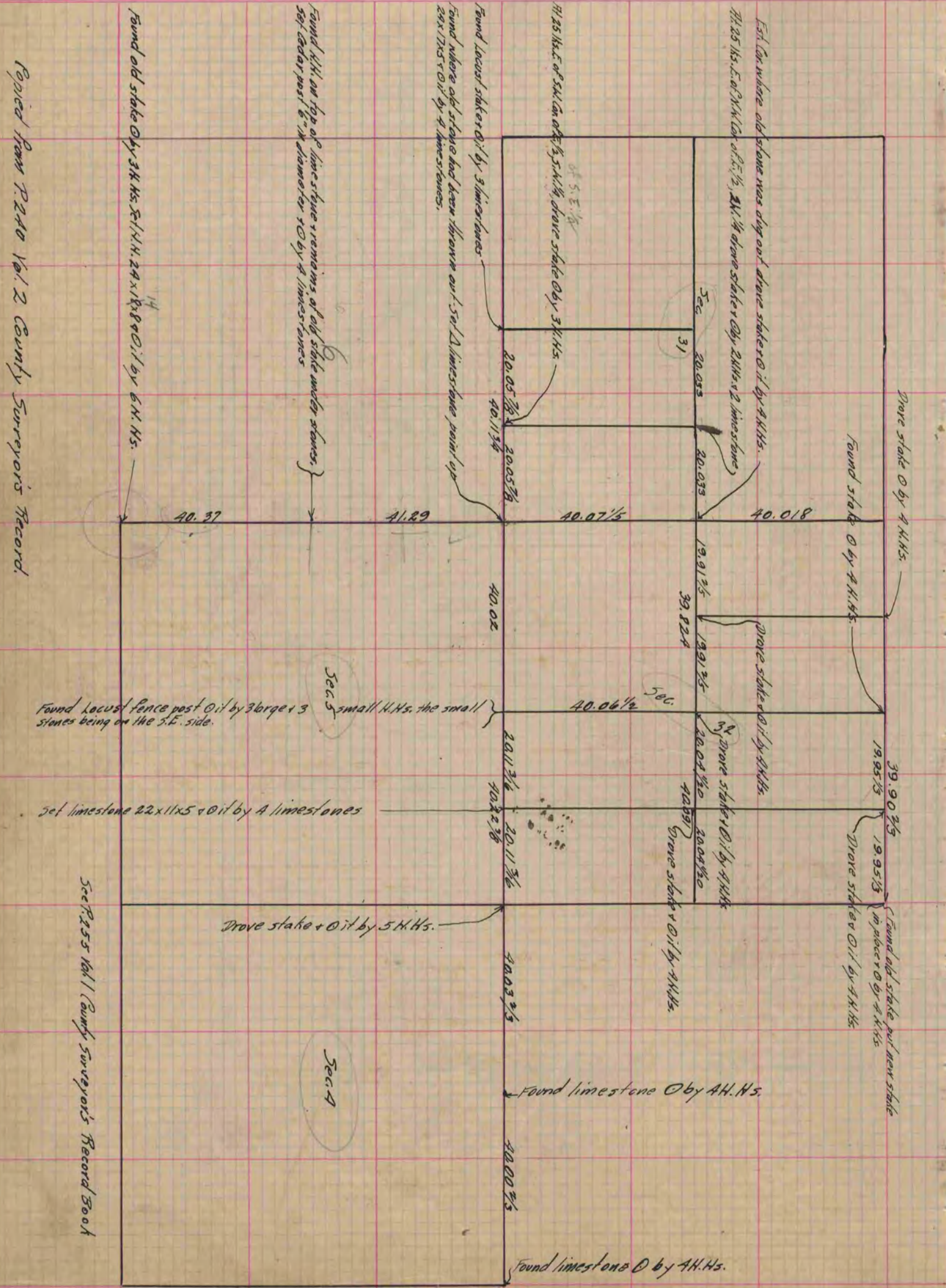
Rock County, Wisconsin, made <sup>August</sup> the <sup>21</sup> ~~21~~ 1885

I hereby certify that the following is a correct record of said survey as made by me.

COUNTY BUILDING  
IN CITY OF БЕЛОIT

(Signed) Edward Ruger  
R.H.S.

County Surveyor.



Copied from P.240 Vol. 2 County Surveyors Record.

See P.255 Vol. 1 County Surveyors Record Book