

U.S. PUBLIC LAND SURVEY MONUMENT RECORD

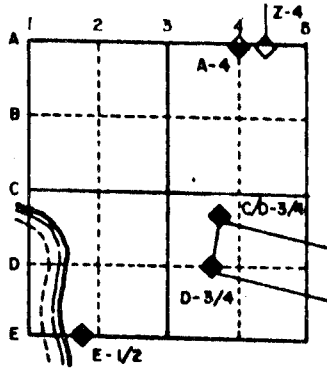
For Public Land Survey Corners in the
T. 3 N., R. 16 E.

CORNER CODE INDEX

	1	2	3	4	5	6	7	8	9	10	11	12	13	14	15	16	17	18	19	20	21	22	23	24	25
A																									
B																									
C	6																								
D		5																							
E			4																						
F				3																					
G					2																				
H																									
I																									
J																									
K																									
L																									
M																									
N																									
O																									
P																									
Q																									
R																									
S																									
T																									
U																									
V																									
W																									
X																									
Y																									
Z																									

PLACE MONUMENT SYMBOL (◆) AT PROPER LOCATION ON ABOVE INDEX

EXAMPLE



CENTER TWP
ROCK COUNTY WI

IF AVAILABLE STATE PLANE COORDINATES

North (Y) _____ Eleve. (Z) _____
East (X) _____ Zone _____
Hor. Datum _____ Vert. Datum _____

(a.)

◆ CORNER MONUMENT

○ WITNESS MONUMENT

BEARINGS ARE BASED ON:

FIELD BOOK _____ PAGE # _____

MICROFILMED

SHOW A PLAN VIEW DRAWING DEPICTING THE CORNER MONUMENT AND SURROUNDING PHYSICAL FEATURES, INCLUDING THE EXCAVATION AREA AND DEPTH. THE CORNER MONUMENT SHALL HAVE THE FOLLOWING CHARACTERISTICS: 1) HAVE AT LEAST TWO PREDETERMINED BREAK-OFF POINTS. 2) IF BROKEN, LEAVE A PERMANENTLY MAGNETIZED REMNANT AT THE ORIGINAL POINT. 3) MUST BE EXTENDABLE. 4) THE CAP IS INSCRIBED: ROCK COUNTY SURVEY MONUMENT - PENALTY FOR DISTURBING MARKER. 5) OR AN EXISTING CUT LIMESTONE. AN IRON PIPE 1 1/2" x 4'0" (MINIMUM) MAY BE USED IN AREAS WHERE GROUND WATER IS WITHIN ONE FOOT OF THE SURFACE. IF THE CORNER IS OCCUPIED BY AN IMPROVEMENT (MANHOLE, BURIED CABLE, ETC.) ANY DURABLE, DISTINCT MONUMENT MAY BE USED. CORNERS SHALL BE REFERENCED WITH AT LEAST 4 DURABLE WITNESS MONUMENTS. WITNESS MONUMENTS SHALL BE MADE OF CONCRETE, NATURAL STONE, IRON OR OTHER EQUALLY DURABLE MATERIAL, EXCEPT WOOD. DESCRIBE THE CORNER AND THE WITNESS MONUMENTS.

CORNER CODE:

Z 19(1)

(A) Describe any record evidence, monument evidence, occupational evidence, testimonial evidence of any other material evidence you considered, and whether the monument was found or placed.

- 1868 LOCKE REMONUMENTATION INTERSECTED 1/4 LINE FOR TOWN 3 11 LKS NORTH OF COR. FOUND STONE WITH STAKE SET BY ANDREW CODDINGTON IN OLD MOUND. COR IN CENTER OF HWY & IN LINE OF FENCE RUNNING NORTH. PLACED NORTH 1/4 COR OF SECTION 2 .66' WEST OF 1/4 COR OF SECTION 35. PLACED CUT LIMESTONE AT NORTH 1/4 COR. SHOWS A DISTANCE OF 2657.49 FROM THE SW TO S 1/4 CORNERS OF SECTION 35.
- 1877 RUGER VOL 2 PG 234 SUBDIVIDED SECTION 2 STATES NOTHING ABOUT THE S 1/4 COR BUT STATES THAT THE N 1/4 COR OF SECTION 2 IS SOUTH OF A LINE DRAWN FROM THE NW TO NE CORNERS OF SEC 2.
- 1933 SUNNY VOL 3 PG 235 AT THE N 1/4 COR OF SECTION 2 SET 1" X 36" PIPE IN CONCRETE PAVEMENT 8.0' SOUTH OF CENTER OF SAME. SHOWS A DISTANCE OF 2656.9 TO BOTH THE NW AND NE CORNERS OF SECTION 2. SHOWS A THE N 1/4 COR .66 WEST OF THE S 1/4 COR OF SECTION 35. STATES NOTHING ABOUT THE S 1/4 COR.
- 1977 BARNES VOL 6 PG 364 PLACED ALUM MON ON LINE WITH N 1/4 COR OF SECTION 2 AND NE COR OF SECTION 2 AT RECORD DISTANCE, .66'. AT N 1/4 CORNER OF SEC 2 FOUND 1" PIPE 0.2' DEEP. PLACED ALUMINUM MONUMENT. 1979 SCHROEDER VOL 5 PG 531 SUBDIVIDED SECTION USING ALUMINUM MONUMENT.
- 1988 DUG AND FOUND CUT LIMESTONE 26" DEEP AT THE N 1/4 CORNER OF SECTION 2 T2N R11E. THE STONE IS 3.26' FROM THE ALUMINUM MONUMENT. REJECTED THE PERPETUATED LOCATION THAT SUNNY ESTABLISHED IN 1933. ESTABLISHED THE SOUTH QUARTER CORNER ON LINE WITH THE CUT LIMESTONE AND THE NW CORNER OF SECTION 2. DID NOT MONUMENT BECAUSE STH 11 WILL BE RECONSTRUCTED WITHIN THE NEXT TWO YEARS.

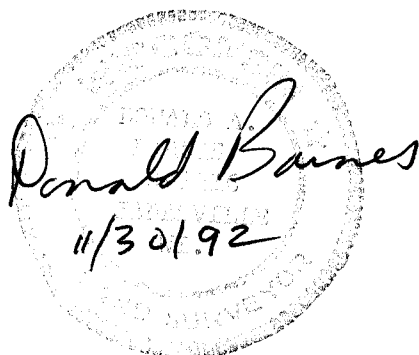
FOUND DOT DISK THAT APPEARED TO PERPETUATE THEIR STATION 379+20.

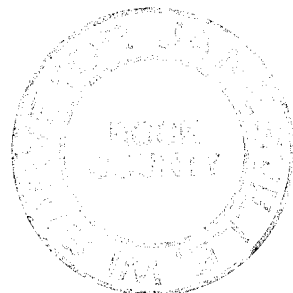
(C) Was the corner restored through acceptance of (1) an obliterated evidence location or (2) a found perpetuated location?

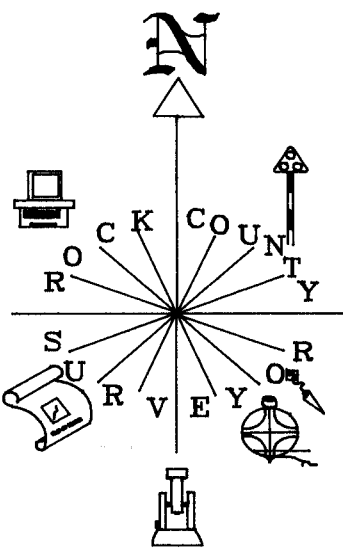
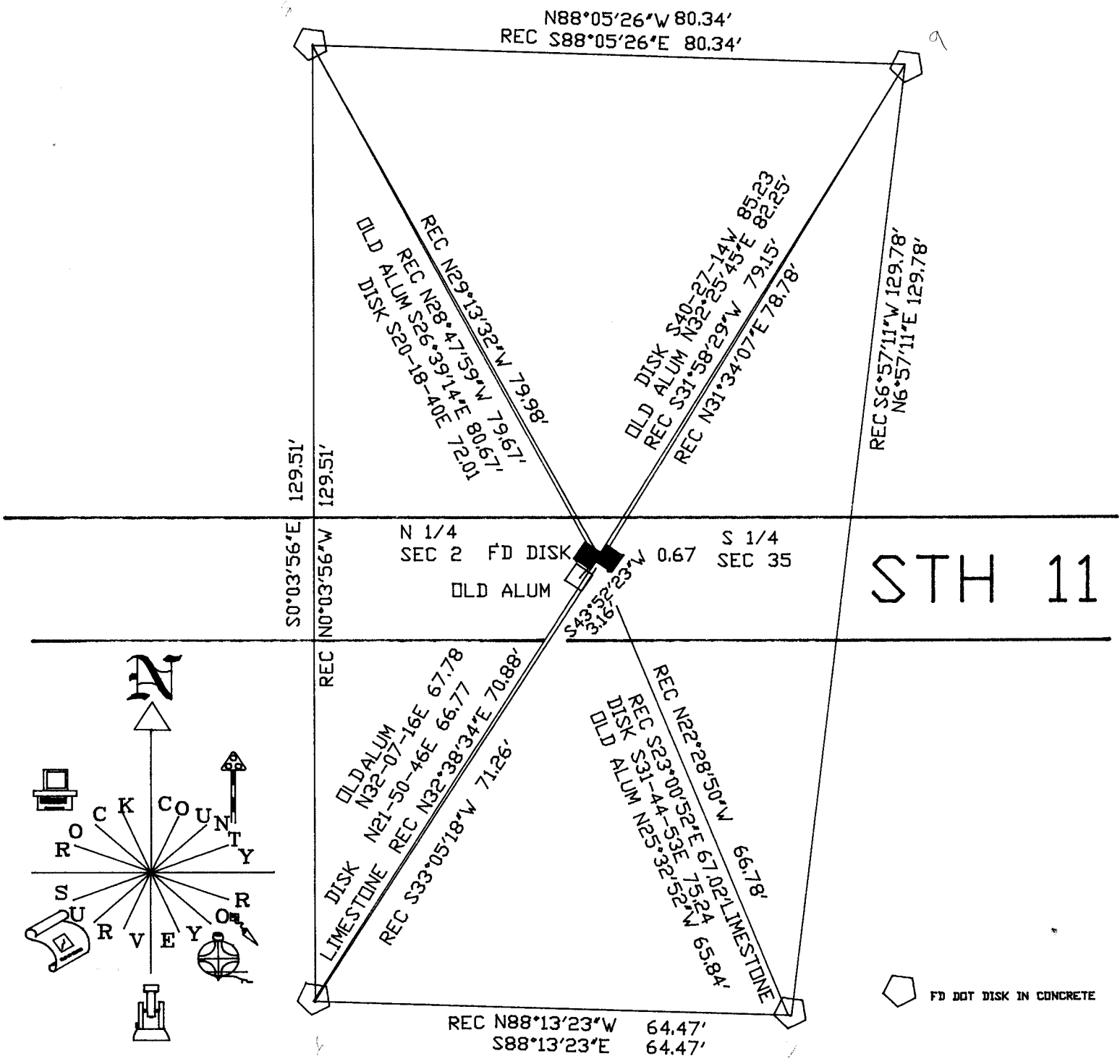
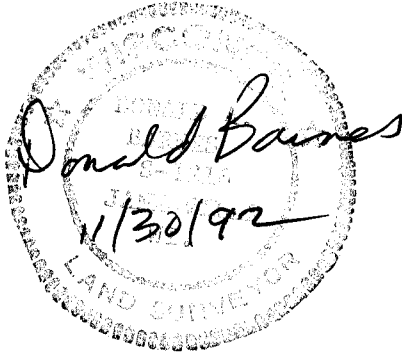
ACCEPTED TIES OF RECORD. DOT DID NOT PLACE A MONUMENT.

(D) Describe any material discrepancy between the location of the corner as restored or reestablished and the location of that corner as previously restored or reestablished by distance and direction. Show the discrepancy on the plan view drawing under (a), above. Show the distances between the corner as previously restored or reestablished and (1) the corner as restored or reestablished, and (2) to at least 4 of the witness monuments shown on the drawing in (a), above.

I, Donald Barnes, hereby certify that the corner points as identified by the corner code index were, in a field survey on November 9, 1992 established, re-established, monumented, re-monumented, recovered or restored as expressed below and in conformance with the regulations and rules as required in the current manual of survey instructions of the United States Department of Interior, Bureau of Land Management.


Donald Barnes
11/30/92





FD DOT DISK IN CONCRETE

N 1/4 COR SEC 2 PLYMOUTH TWP
IS ON THE WEST SIDE. FOUND CUT LIMESTONE.

Z 19(1)