

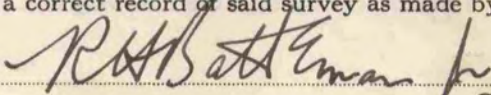
# PLAT AND RECORD

COUNTY BUILDING  
IN CITY OF BELOIT

Of a Survey on Section 14 T 3 R 12 E. of the 4 P. M. in JANESVILLE Township

Rock County, Wisconsin, made NOVEMBER the 2nd 1959

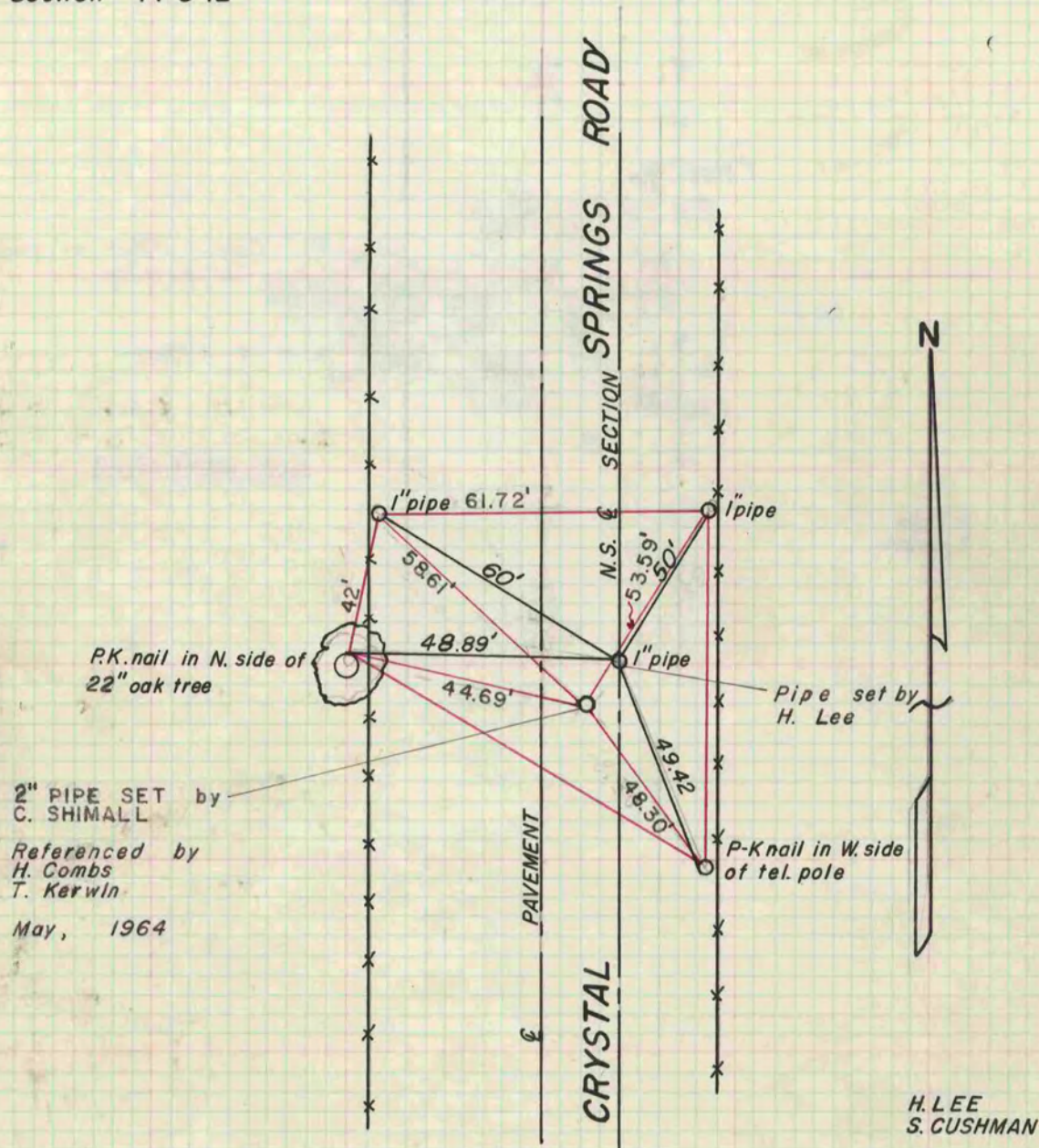
I hereby certify that the following is a correct record of said survey as made by me.



County Surveyor.

THE GEO. D. BARNARD COMPANY, ST. LOUIS

Center of Section 14-3-12



H. LEE  
S. CUSHMAN