

# PLAT AND RECORD

Of a Survey on Section 6 T 2 R 14 E. of the 4 P. M. in BRADFORD Township

Rock County, Wisconsin, made AUGUST the 15 1960

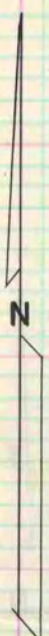
I hereby certify that the following is a correct record of said survey as made by me.

COUNTY BUILDING  
IN CITY OF BELoit

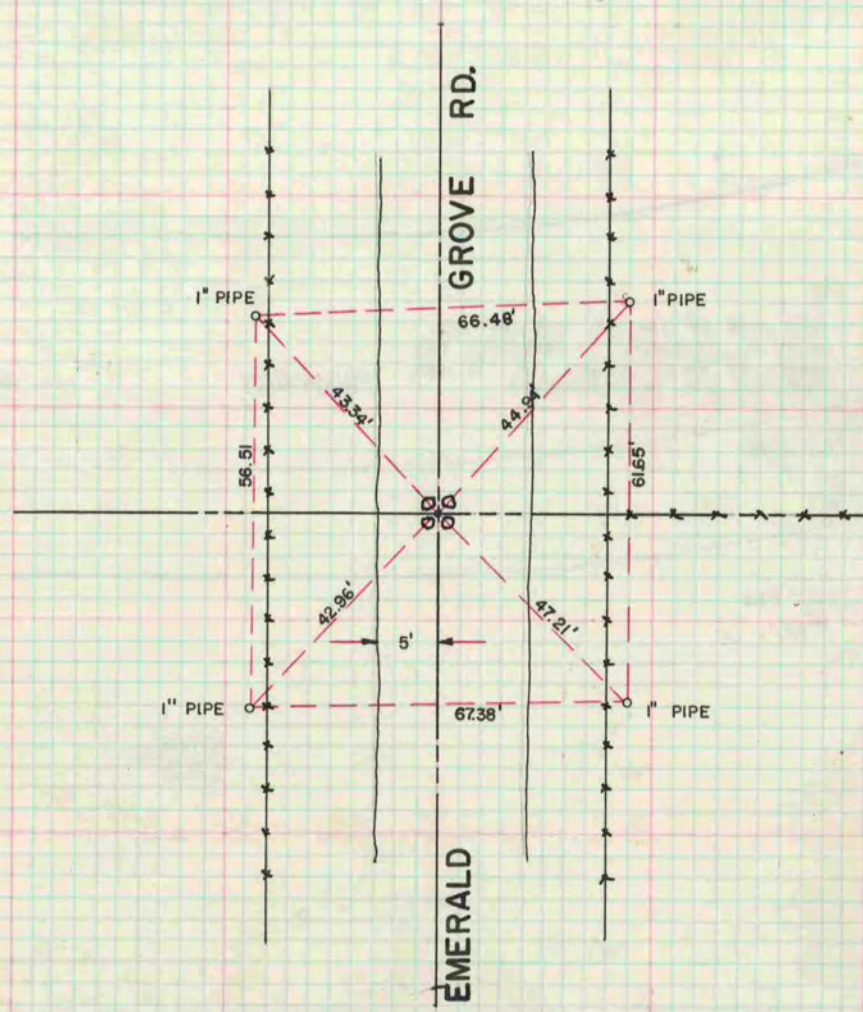
*Robert E. Korman*

County Surveyor.

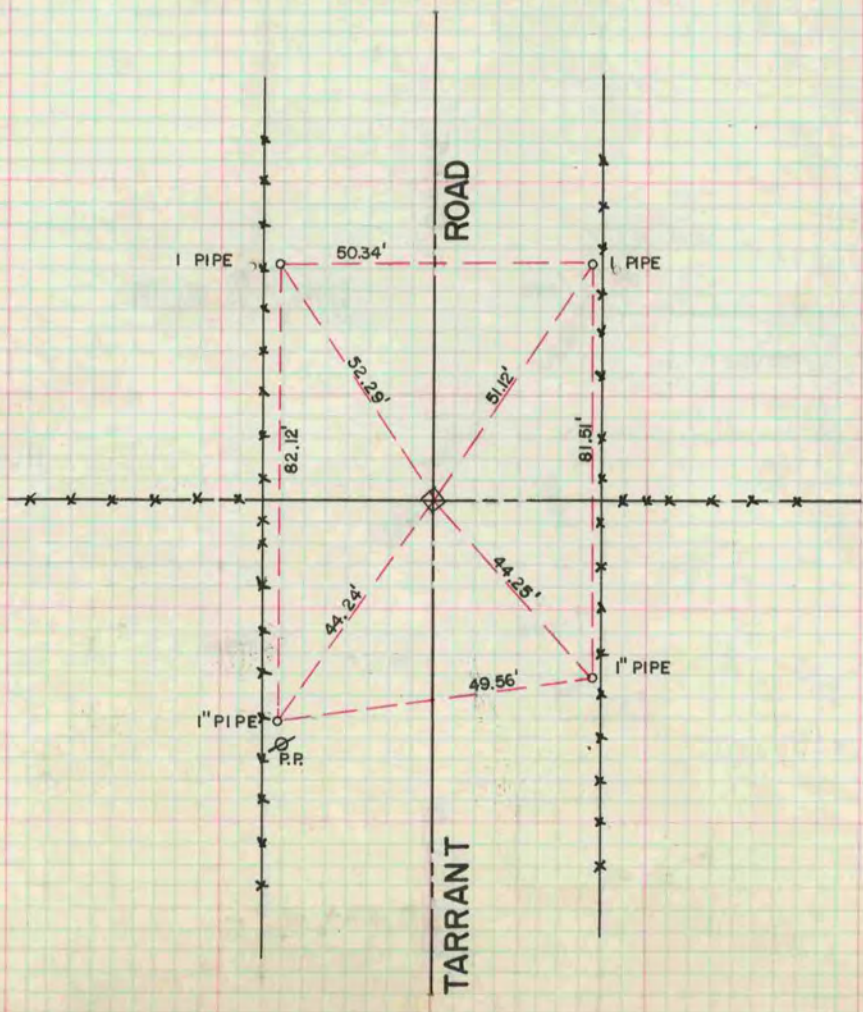
THE GEO. B. BARBARO COMPANY, ST. LOUIS



R. THOM  
G. HANSON  
J. KANE



FOUND CEDAR POST SURR. BY  
4 LARGE LIMESTONES AT  
THE EAST 1/4 COR. SEC. 6-2-14  
NOTE: SET 1" PIPE



FOUND CUT STONE MON. AT  
THE WEST 1/4  
6-2-14 NOTE: SET RR. SPIKE