

PLAT AND RECORD

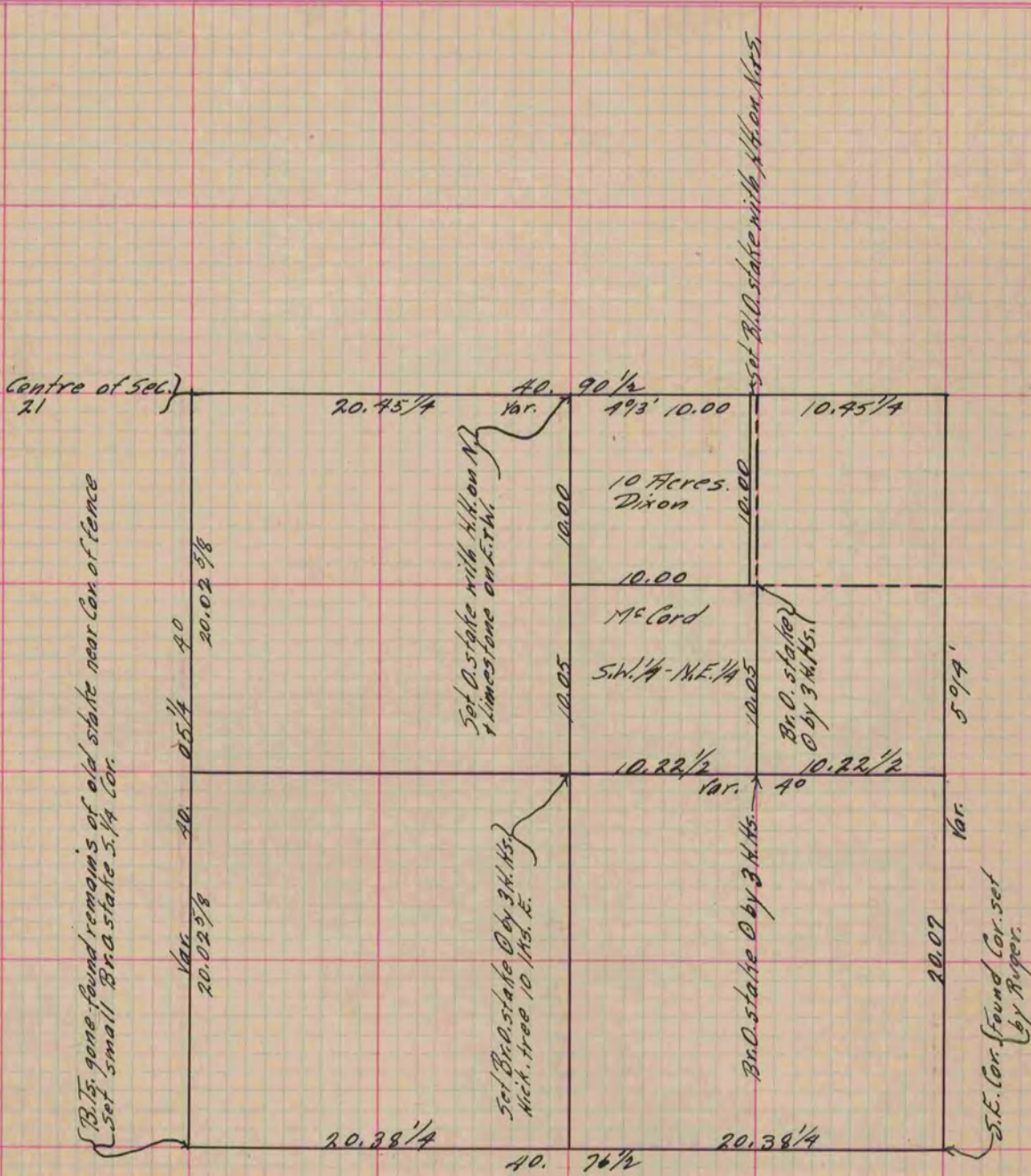
Of a Survey on Section ^{SE 1/4} 21 T 4 R 14 E. of the 4 P. M. in LIMA Township
 Rock County, Wisconsin, made April the 21, 22 & 23 1872

I hereby certify that the following is a correct record of said survey as made by me.

COUNTY BUILDING
 IN CITY OF БЕЛОIT

(Signed) R. K. Lee
RKL

Deputy
 County Surveyor.



Copied from Page 55 Vol. 2 Original County Surveyor's Record.