

PLAT AND RECORD

Of a Survey on Section 26 T 3 R 12 E. of the 4 P. M. in Janesville Township

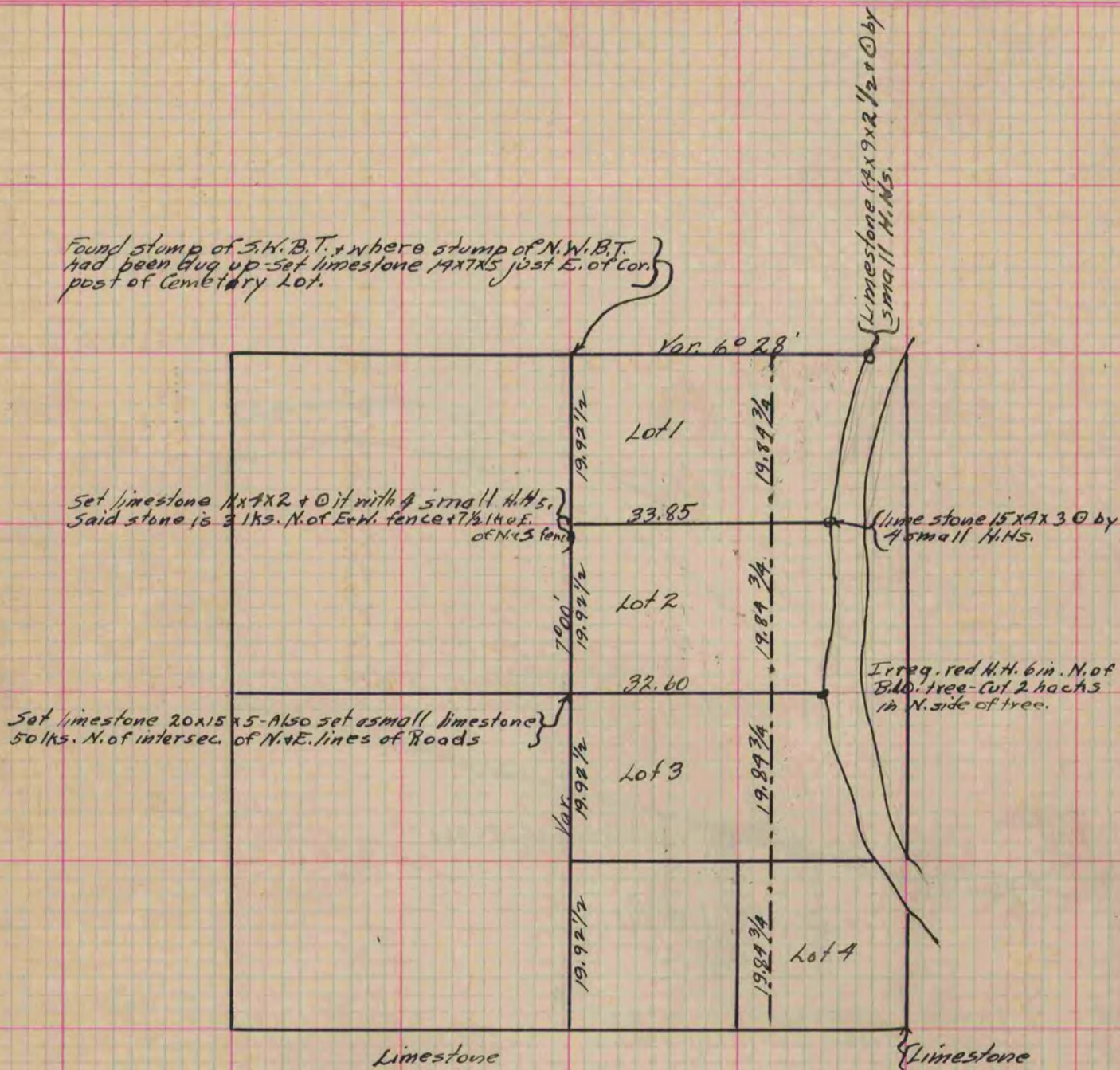
Rock County, Wisconsin, made April the 26+27 1871

I hereby certify that the following is a correct record of said survey as made by me.

COUNTY BUILDING
IN CITY OF BELOIT

(Signed) Edward Ruger

County Surveyor.



Copied from Page 38 Vol. 2 Original County Surveyor's Record.