

# PLAT AND RECORD

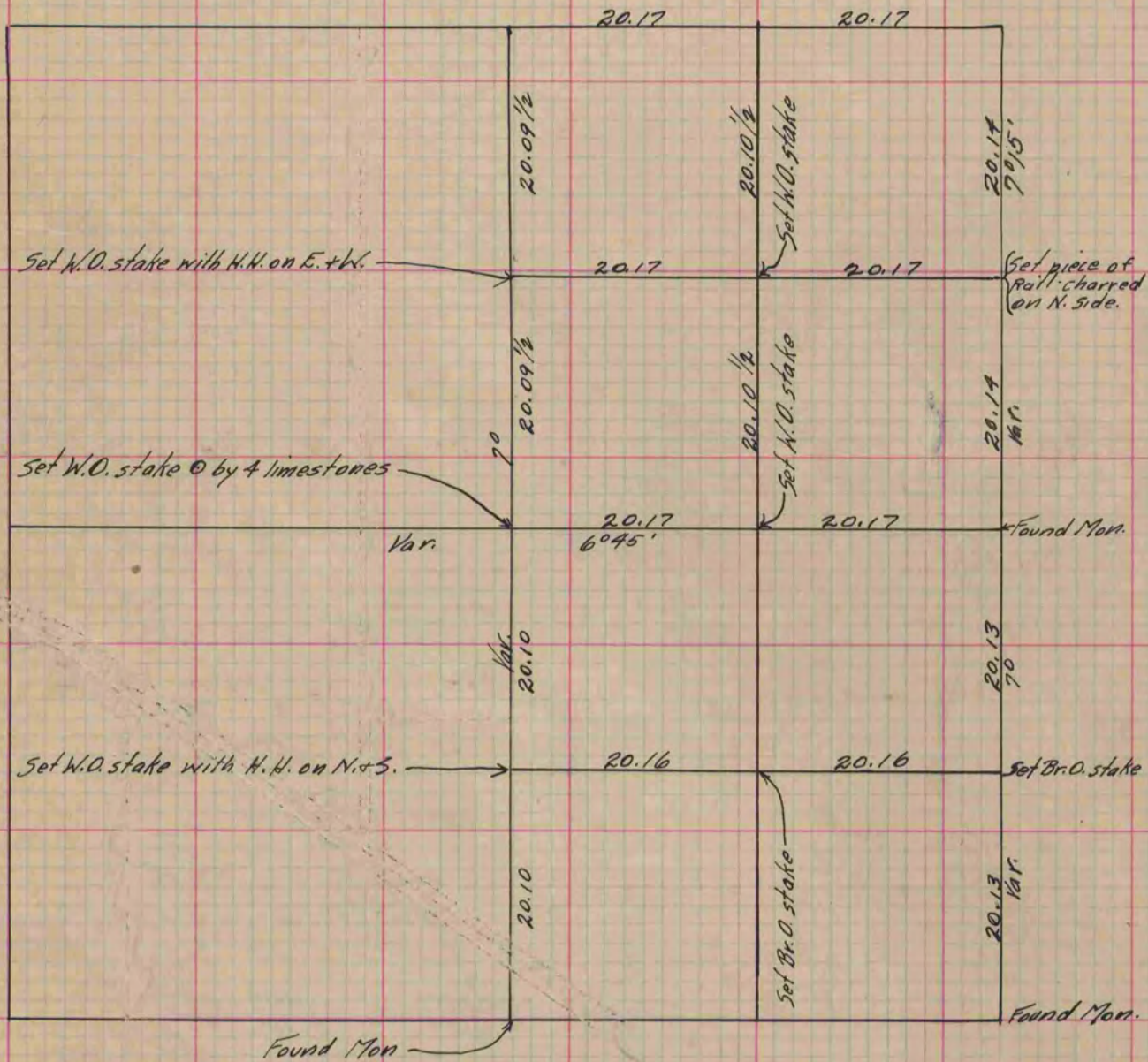
Of a Survey on Section 14 T 2 R 11 E. of the 4 P. M. in Plymouth Township  
Rock County, Wisconsin, made October the 29<sup>th</sup> 1869

I hereby certify that the following is a correct record of said survey as made by me.

COUNTY BUILDING  
IN CITY OF BELOIT

(Signed) R. K. Lee  
R. K. Lee

County Surveyor.



Copied from Lower 1/2 of Page 7 Vol. 2 Original County Surveyor's Record.