

# PLAT AND RECORD

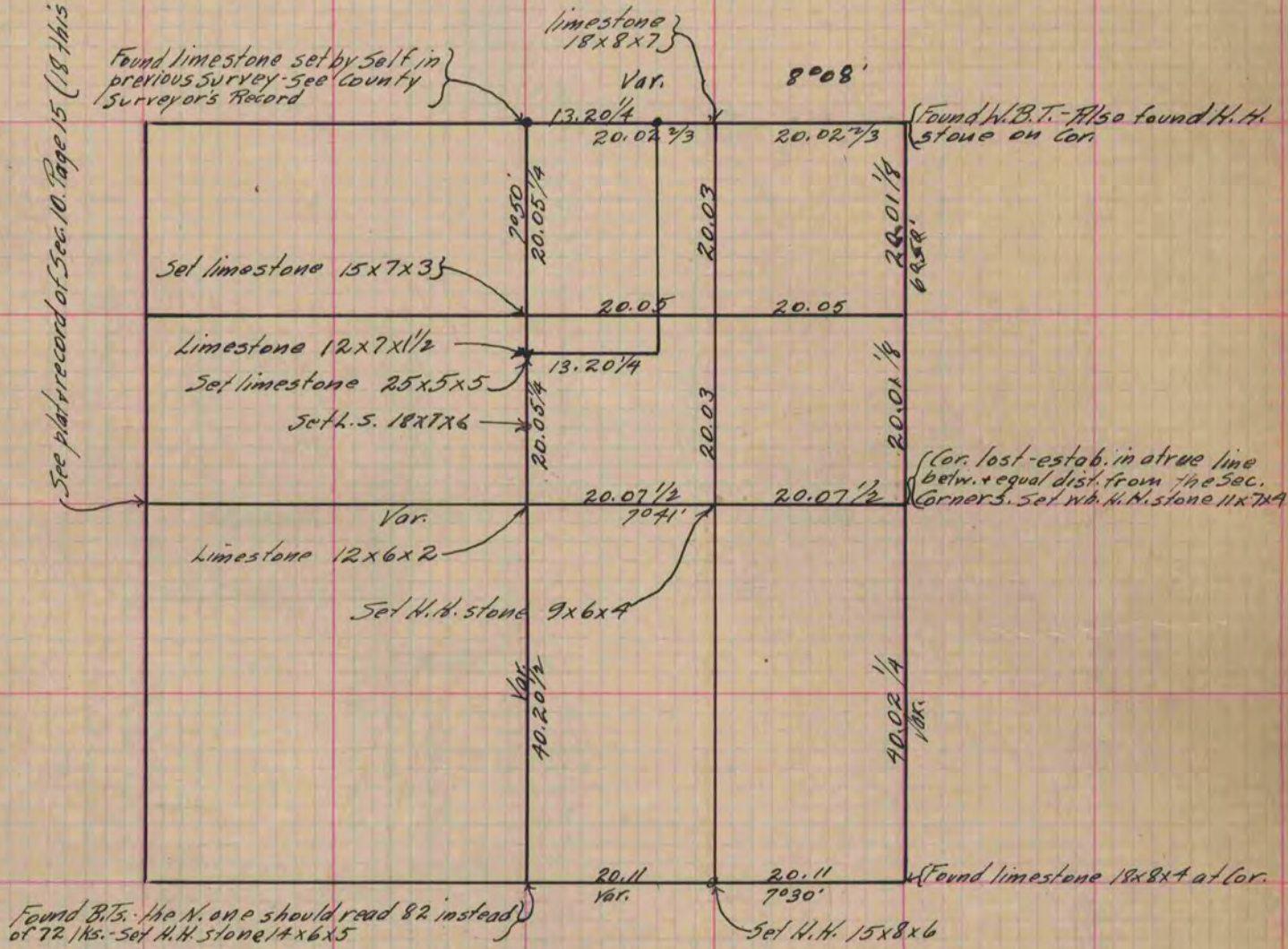
Of a Survey on Section 11 T 3 R 12 E. of the 4 P. M. in Janesville Township  
 Rock County, Wisconsin, made <sup>November 16<sup>th</sup> 1869+</sup> ~~February 11+12 1870+~~ <sup>November</sup> the 14 1873

I hereby certify that the following is a correct record of said survey as made by me.

COUNTY BUILDING  
IN CITY OF БЕЛОИТ

(Signed) Edward Ruger  
R. H. B. Deputy  
County Surveyor.

See plat record of Sec. 10. Page 15 (18 this book) R.H.B.



At Stawson's S.W. Cor. set limestone 12x7x1 1/2 - At the S.W. Cor. of the N. 1/2 of the N.E. 1/4 of Sec. 11 Janesville set limestone 15x7x3 - At the point where the N. x S. 1/4 of said Sec. intersects Stawson's S. line set limestone 25x5x5.  
 Stawson's S.W. Cor. is 27 1/2 lks. S. + 10 1/2 lks. W. of the S.W. Cor. of the N. 1/2 of the N.E. 1/4 of Sec. 11. Janesville. It was estab. from the bearing tree mentioned in his deed.

Copied from Upper 1/2 of Page 16 Vol. 2. Original County Surveyor's Record.