

PLAT AND RECORD

Of a Survey on Section 10 T 3 R 12 E. of the 4 P. M. in *Janesville* Township

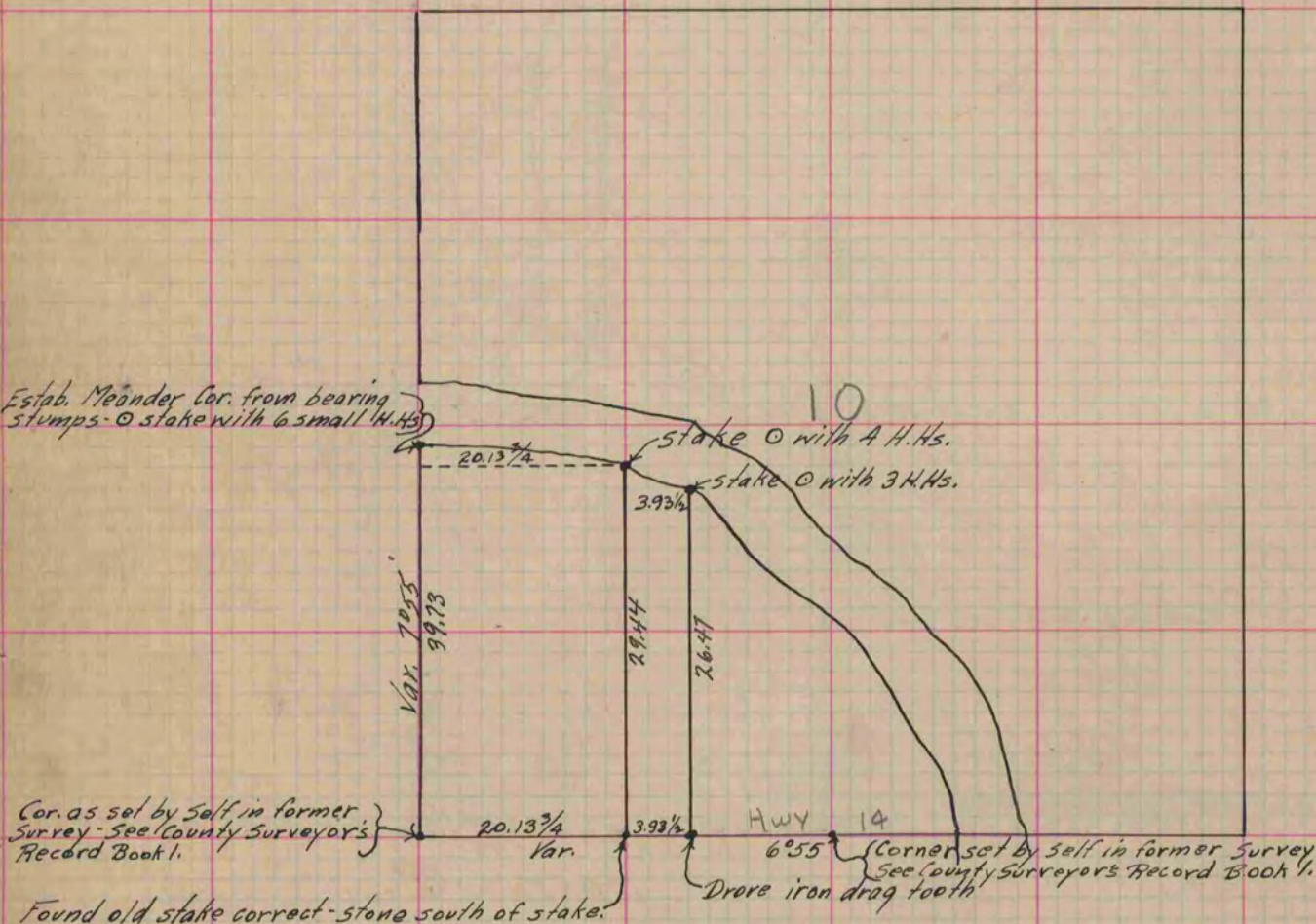
Rock County, Wisconsin, made *October* the *16th* 1869

I hereby certify that the following is a correct record of said survey as made by me.

COUNTY BUILDING
IN CITY OF BELOIT

(Signed) *Edward Ruger*
R. H. B.

{ Deputy
County Surveyor.



Copied from Lower 1/2 Page 12 Vol. 2. Original County Surveyor's Record