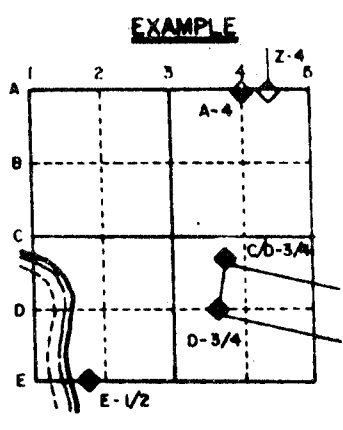


U.S. PUBLIC LAND SURVEY MONUMENT RECORD

For Public Land Survey Corners in the
T. 3 N., R. 11 E.

CORNER CODE INDEX

	1	2	3	4	5	6	7	8	9	10	11	12	13	14	15	16	17	18	19	20	21	22	23	24	25
A																									
B																									
C	6																								
D		5																							
E			4																						
F				3																					
G					2																				
H																									
I																									
J	7																								
K		8																							
L			9																						
M				10																					
N					11																				
O						12																			
P							13																		
Q								14																	
R									15																
S										16															
T											17														
U												18													
V													19												
W														20											
X															21										
Y																22									
Z																	23								
																		24							
																			25						
																				26					
																					27				
																						28			
																							29		
																								30	
																									31
																									32
																									33
																									34
																									35
																									36



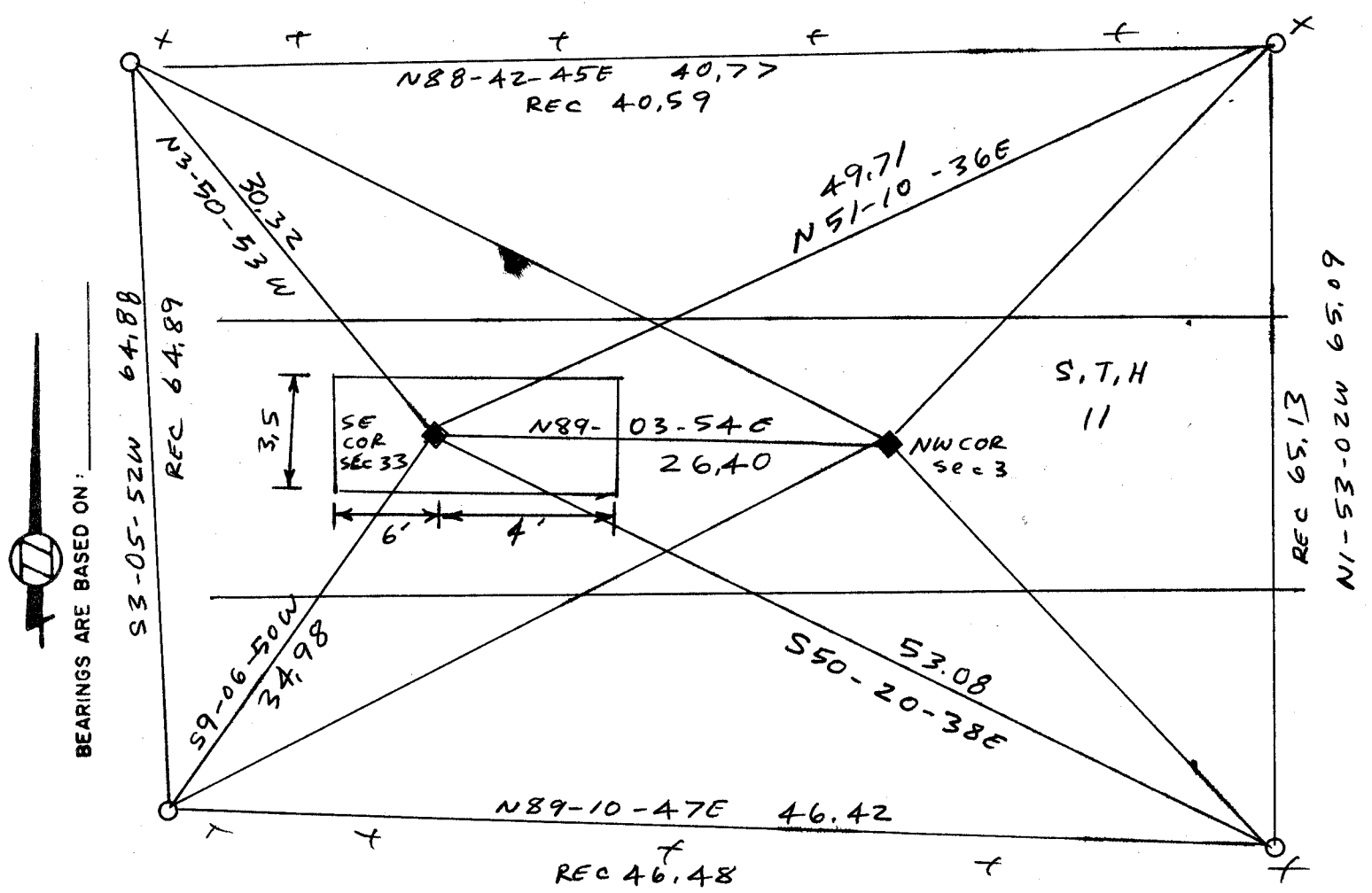
CENTER TWP
 ROCK COUNTY WI

IF AVAILABLE
 STATE PLANE COORDINATES
 North (Y) 246,015.82 Eleve. (Z) _____
 East (X) 2,217,948.38 Zone _____
 Hor. Datum _____ Vert. Datum _____

PLACE MONUMENT SYMBOL (◆) AT PROPER LOCATION ON ABOVE INDEX

USING D.O.T CONTROL

(a) ◆ CORNER MONUMENT ○ WITNESS MONUMENT



FIELD BOOK 2 PAGE # 76
3 3 PLYMOUTH BK

MICROFILMED

SHOW A PLAN VIEW DRAWING DEPICTING THE CORNER MONUMENT AND SURROUNDING PHYSICAL FEATURES, INCLUDING THE EXCAVATION AREA AND DEPTH. THE CORNER MONUMENT SHALL HAVE THE FOLLOWING CHARACTERISTICS: 1) HAVE AT LEAST TWO PREDETERMINED BREAK-OFF POINTS. 2) IF BROKEN, LEAVE A PERMANENTLY MAGNETIZED REMNANT AT THE ORIGINAL POINT. 3) MUST BE EXTENDABLE. 4) THE CAP IS INSCRIBED: ROCK COUNTY SURVEY MONUMENT - PENALTY FOR DISTURBING MARKER. 5) OR AN EXISTING CUT LIMESTONE. AN IRON PIPE 1 1/2" x 4'0" (MINIMUM) MAY BE USED IN AREAS WHERE GROUND WATER IS WITHIN ONE FOOT OF THE SURFACE. IF THE CORNER IS OCCUPIED BY AN IMPROVEMENT (MANHOLE, BURIED CABLE, ETC.) ANY DURABLE, DISTINCT MONUMENT MAY BE USED. CORNERS SHALL BE REFERENCED WITH AT LEAST 4 DURABLE WITNESS MONUMENTS. WITNESS MONUMENTS SHALL BE MADE OF CONCRETE, NATURAL STONE, IRON OR OTHER EQUALLY DURABLE MATERIAL, EXCEPT WOOD. DESCRIBE THE CORNER AND THE WITNESS MONUMENTS.

CORNER CODE: 213

(b.) Describe any record evidence, monument evidence, occupational evidence, testimonial evidence or any other material evidence you considered, and whether the monument was found or placed.

1866 LOCKE REMONUMENTATION. INTERSECTED NORTH BOUNDARY 11.88' EAST OF CORNER. CORNERS FOR TOWN 2 AND 3 BOTH LOST. SET CORNER FOR TOWN 3 MIDWAY AND ON A RIGHT LINE BETWEEN THE 1/4 CORNERS 1/2 MILE EAST AND WEST, AND SET THE CORNER FOR TOWN 2 2.64' EAST OF CORNER FOR TOWN 3. CORNER IN CENTER OF HIGHWAY. PLACED CUT LIMESTONES.

1934 SUNNY VOL 3 PG 236 SHOWS CORNER IS 40 LINKS WEST OF THE NE CORNER OF SECTION 4. STATES NOTHING ELSE ABOUT THE CORNER. DUG 4' X 10' HOLE AND FOUND NOTHING. SUBSOIL INDICATES AREA WAS CUT. LARGE BANK CUT ON NORTH SIDE AND POSSIBLY SMALL CUT ON SOUTH SIDE. PLACED CORNER ON LINE WITH NE CORNER OF SECTION 3 PLYMOUTH AND NORTH QUARTER CORNER OF SECTION 4 PLYMOUTH AT RECORD DISTANCE.

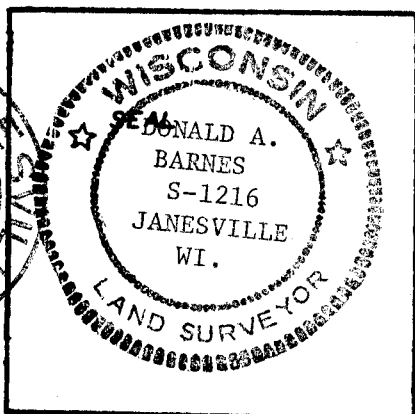
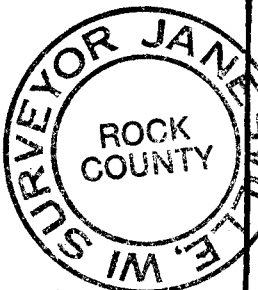
(c.) Was the corner restored through acceptance of (1) an obliterated evidence location, or, (2) a found perpetuated location?

YES. USED LOCKE'S JOG DISTANCE WHICH WAS THE SAME AS THE ORIGINAL GOVERNMENT DISTANCE.

(d.) Describe any material discrepancy between the location of the corner as restored or reestablished and the location of that corner as previously restored or reestablished by distance and direction. Show the discrepancy on the plan view drawing under (d), above. Show the distances between the corner as previously restored or reestablished and (1) the corner as restored or reestablished, and (2) to at least 4 of the witness monuments shown on the drawing in (d), above.

(e.) Was the corner reestablished through lost corner proportionate methods? If so, show the method, including the directions and distances to other public land survey corners used as evidence or used for proportioning in determining the corner location.

I, Donald Barnes, hereby certify that the corner points as identified by the corner code index were, in a field survey on Oct 18 1988, established, re-established, monumented, re-monumented, recovered or restored as expressed below and in conformance with the regulations and rules as required in the current manual of survey instructions of the United States Department of Interior, Bureau of Land Management.



COUNTY SURVEYOR FILING DATA

Date of Computer Entry _____

Date Received _____

Date Microfilmed _____

Treasurer's Receipt No. _____

Number of Included Sheets _____

AFFIX YOUR LAND SURVEYOR SEAL. CORNER CODE 213