

**PUBLIC LAND SURVEY MONUMENT RECORD**

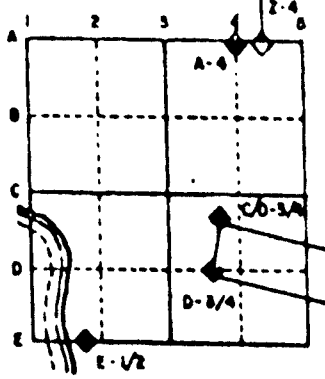
For Public Land Survey Corners in the  
T. 3 N., R. 11 E.

**CORNER CODE INDEX**

	1	2	3	4	5	6	7	8	9	10	11	12	13	14	15	16	17	18	19	20	21	22	23	24	25
A																									
B	6																								
C		5																							
D			4																						
E				3																					
F					2																				
G																									
H	7																								
I		8																							
J			9																						
K				10																					
L					11																				
M						12																			
N							13																		
O								14																	
P									15																
Q										16															
R											17														
S												18													
T													19												
U														20											
V															21										
W																22									
X																	23								
Y																		24							
Z																			25						
																				26					
																					27				
																						28			
																							29		
																								30	
																									31
																									32
																									33
																									34
																									35
																									36

PLACE MONUMENT SYMBOL (◆) AT PROPER LOCATION ON ABOVE INDEX

**EXAMPLE**



CENTER TWP  
ROCK COUNTY WI

IF AVAILABLE  
STATE PLANE COORDINATES

North (Y) \_\_\_\_\_ Eleve. (Z) \_\_\_\_\_  
 East (X) \_\_\_\_\_ Zone \_\_\_\_\_  
 Hor. Datum \_\_\_\_\_ Vert. Datum \_\_\_\_\_

◆ CORNER MONUMENT

○ WITNESS MONUMENT

BEARINGS ARE BASED ON:

(B) Describe any record evidence, monument evidence, occupational evidence, testimonial evidence or any other material evidence you considered, and whether the monument was found or placed.

1876 RUGER VOL 2 PG 218 DROVE STAKE. 2653.20 TO SE & 2578.29 TO SW CORNERS OF SEC 6. 2647.60 TO CENTER OF SEC 7.

1876 RUGER VOL 2 PG 219 "FOR CORNERS ON SOUTH LINE SEE PAGE 172". USED CORNER TO SUBDIVIDE SECTION 6.

1900 BROWN VOL 2 PG 520 FOUND STAKE. SET STAKE SURROUNDED BY 3 WHITE BRICKS. 2586.54 TO SW AND 2661.78 TO SE CORNERS OF SECTION 6. USED CORNER TO SUBDIVIDE SECTION 6.

19?? KERCH VOL 3 PG 15 FOUND CORNER SET BY BROWN. 2658.8 TO SE & 2585.5 TO SW CORNERS OF SEC 6. CALLS FOR NEW N/S ROAD.

FOUND 8" DIAMETER X 3' ROTTED WOOD POST. 5' DEEP UNDER POST FOUND BUGGY AXLE. PLACED 3/4X24 REROD WITH MAGNETS. AT GROUND SURFACE INSTALLED POLY. MONUMENT ABOVE REROD. CORNER IS 4' NORTH OF SOUTH EDGE OF PAVEMENT EXTENDED FROM THE EAST. IT IS ALSO 2' WEST OF THE EAST EDGE OF THE PAVEMENT EXTENDED FROM THE NORTH.

C) Was the corner restored through acceptance of (1) an obliterated evidence location, or, (2) a found perpetuated location?  
ACCEPTED FOUND PERPETUATED LOCATION

D) Describe any material discrepancy between the location of the corner as restored or reestablished and the location of that corner as previously restored or reestablished by distance and direction. Show the discrepancy on the plan view drawing under (a), above. Show the distances between the corner as previously restored or reestablished and (1) the corner as restored or reestablished, and (2) to at least 4 of the witness monuments shown on the drawing in (a), above.

(E) Was the corner reestablished through lost corner proportionate methods? If so, show the method, including the directions and distances to other public land survey corners used as evidence or used for proportioning the corner location.  
NO

I, Donald Barnes, hereby certify that the corner points as identified by the corner code index were, in a field survey on, April 17, 1995, established, re-established, monumented, re-monumented, recovered or restored as expressed below and in conformance with the regulations and rules as required in the current manual of survey instructions of the United States Department of Interior, Bureau of Land Management.

seal  
*Donald Barnes*  
4/19/95

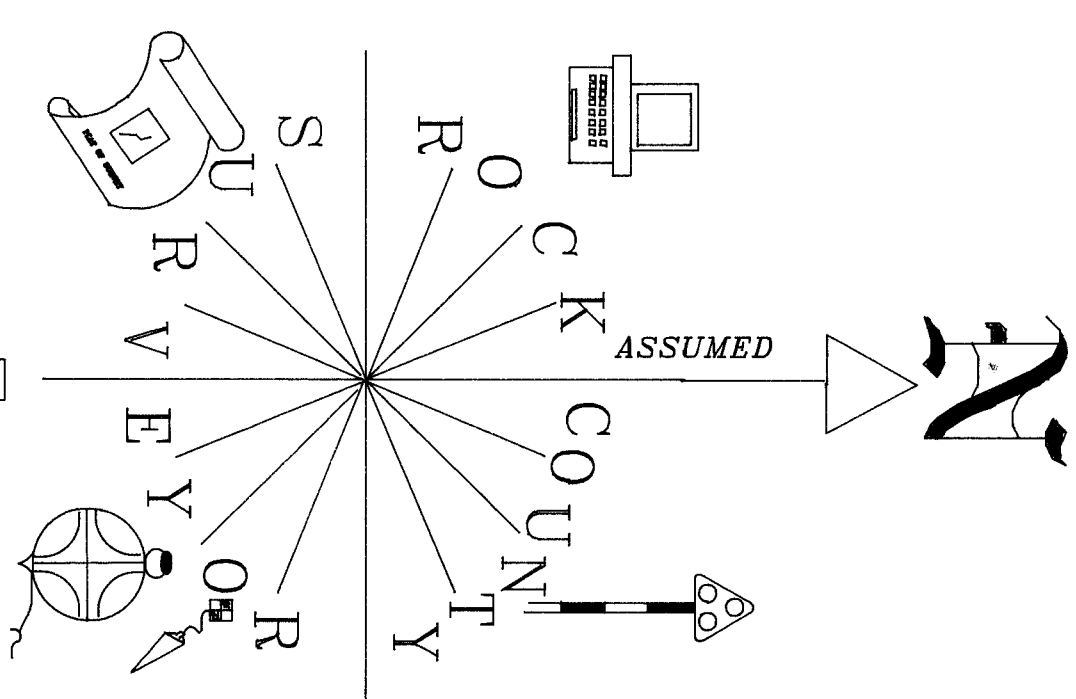
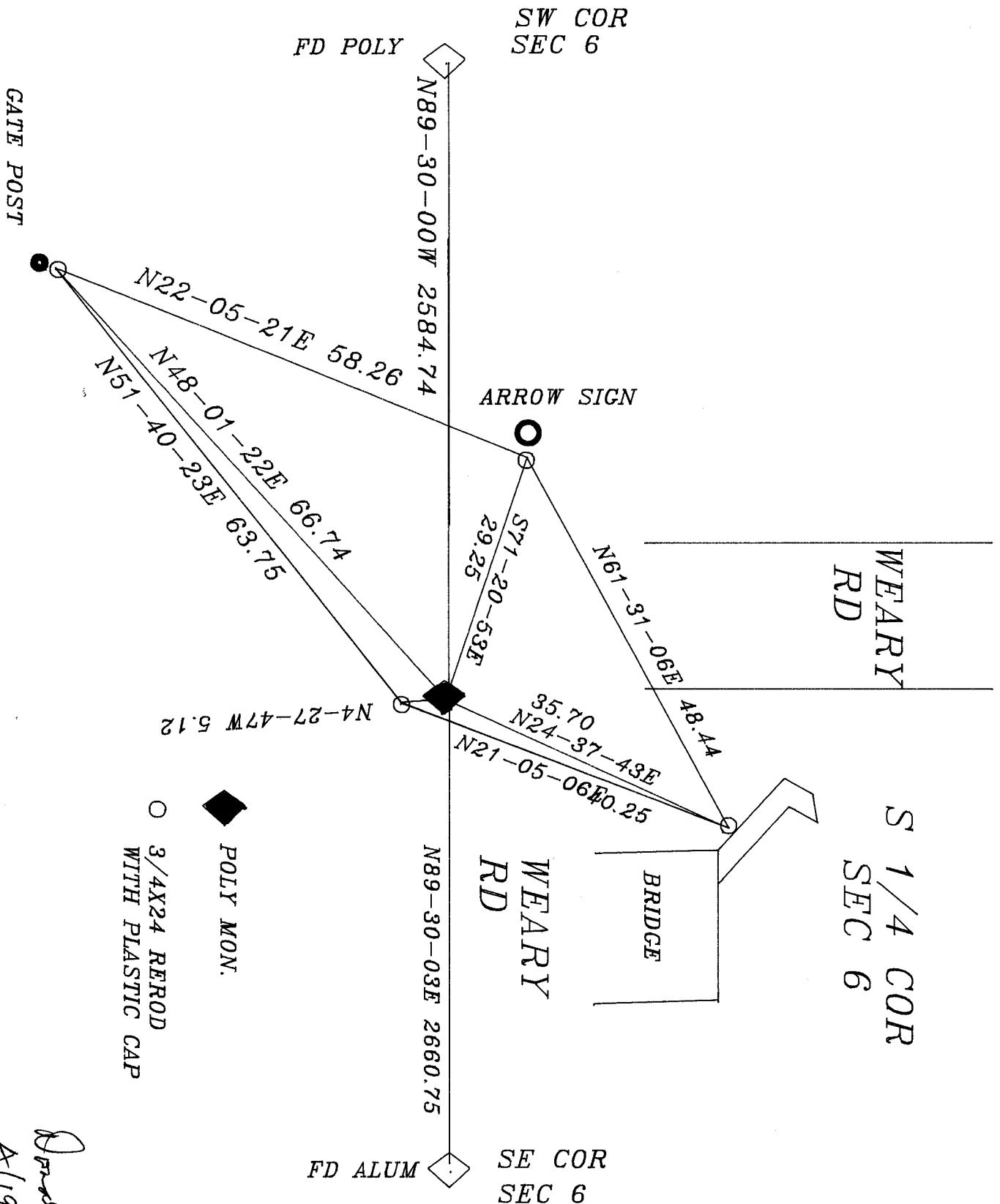
COUNTY SURVEYOR FILING DATA

Date of computer entry \_\_\_\_\_

Date microfilmed \_\_\_\_\_

Number of included sheets \_\_\_\_\_  
CORNER CODE

EMBOSS LAND SURVEYOR SEAL



*Donald Brown*  
A/19/95

FB# 4 PG 47,60,61  
FD 8" DIA 3" WOOD  
POST & UNDER THAT A  
BUGGY AXLE.  
INSTALLED POLY. MON.