

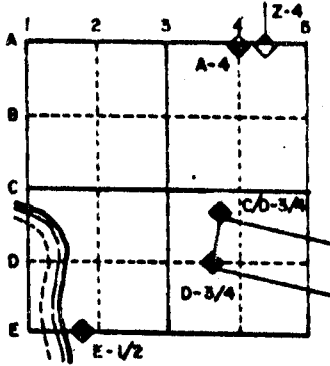
U.S. PUBLIC LAND SURVEY MONUMENT RECORD

For Public Land Survey Corners in the
T. 3 N., R. 11 E.

CORNER CODE INDEX

	1	2	3	4	5	6	7	8	9	10	11	12	13	14	15	16	17	18	19	20	21	22	23	24	25
A																									
B																									
C	6																								
D		5																							
E			4																						
F				3																					
G					2																				
H																									
I																									
J	7																								
K		8																							
L			9																						
M				10																					
N					11																				
O						12																			
P	13																								
Q		14																							
R			15																						
S				16																					
T					17																				
U						18																			
V							19																		
W								20																	
X									21																
Y										22															
Z											23														
												24													
													25												
														26											
															27										
																28									
																	29								
																		30							
																			31						
																				32					
																					33				
																						34			
																							35		
																								36	

EXAMPLE



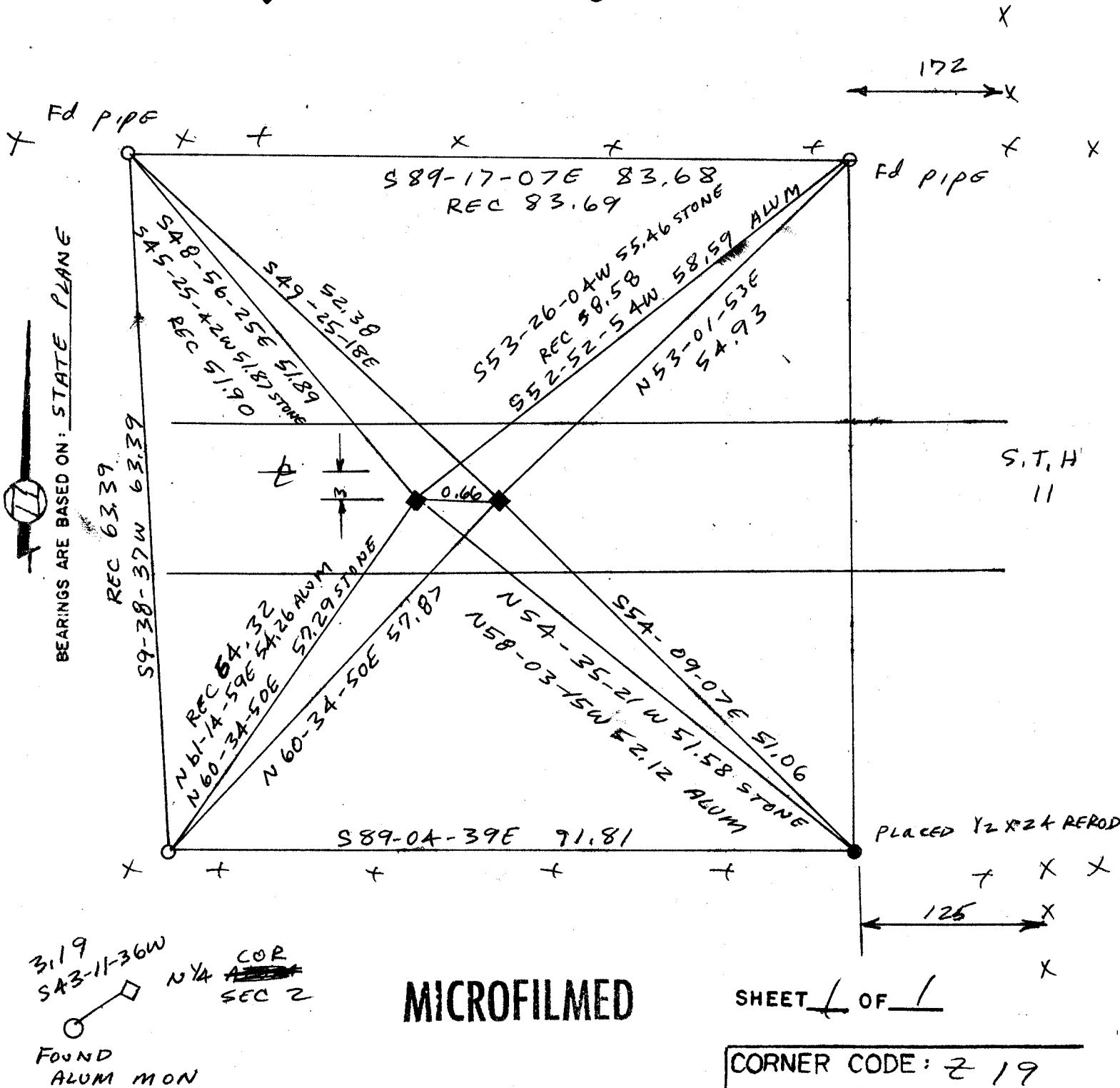
CENTER TWP
ROCK COUNTY WI

IF AVAILABLE STATE PLANE COORDINATES

North (Y) 246,093.47 Eleve. (Z) _____
 East (X) 2,225,932.01 Zone _____
 Hor. Datum _____ Vert. Datum _____

PLACE MONUMENT SYMBOL (◆) AT PROPER LOCATION USING STATE DOT CONTROL LOCATION ON ABOVE INDEX

o.) ◆ CORNER MONUMENT ○ WITNESS MONUMENT



(A) Describe any record evidence, monument evidence, occupational evidence, testimonial evidence of any other material evidence you considered, and whether the monument was found or placed.

1868 LOCKE REMONUMENTATION INTERSECTED 1/4 LINE FOR TOWN 3 11 LKS NORTH OF COR. FOUND STONE WITH STAKE SET BY SUDREW CODDINGTON IN OLD MOUND. COR IN CENTER OF HWY & IN LINE OF FENCE RUNNING NORTH. PLACED NORTH 1/4 COR OF SECTION 2 .66' WEST OF 1/4 COR OF SECTION 35. PLACED CUT LIMESTONE AT NORTH 1/4 COR. SHOWS A DISTANCE OF 2657.49 FROM THE SW TO S 1/4 CORNERS OF SECTION 35.

1877 RUGER VOL 2 PG 234 SUBDIVIDED SECTION 2 STATES NOTHING ABOUT THE S 1/4 COR BUT STATES THAT THE N 1/4 COR OF SECTION 2 IS SOUTH OF A LINE DRAWN FROM THE NW TO NE CORNERS OF SEC 2.

1933 SUNNY VOL 3 PG 235 AT THE N 1/4 COR OF SECTION 2 SET 1" X 36" PIPE IN CONCRETE PAVEMENT 8.0' SOUTH OF CENTER OF SAME. SHOWS A DISTANCE OF 2656.9 TO BOTH THE NW AND NE CORNERS OF SECTION 2. SHOWS A THE N 1/4 COR .66 WEST OF THE S 1/4 COR OF SECTION 35. STATES NOTHING ABOUT THE S 1/4 COR.

1977 BARNES VOL 6 PG 364 PLACED ALUM MON ON LINE WITH N 1/4 COR OF SECTION 2 AND NE COR OF SECTION 2 AT RECORD DISTANCE, .66'. AT N 1/4 OF SEC 2 FOUND 1" PIPE .2' DEEP. PLACED ALUM MON.

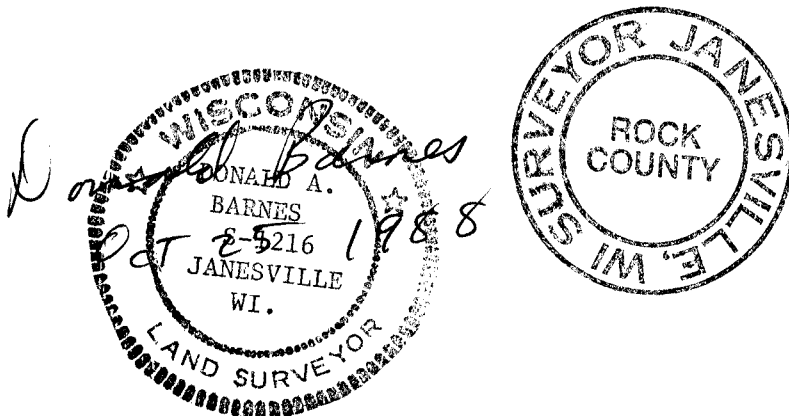
1979 SCHROEDER VOLS PG 531 SUBDIVIDED SECTION USING ALUM MON. DUG AND FOUND CUT LIMESTONE 26" DEEP AT THE N QUARTER CORNER OF SECTION 2 T2N R11E. THE STONE IS 3.26' FROM THE ALUMINUM MONUMENT. REJECTED THE PERPETUATED LOCATION THAT SUNNY ESTABLISHED IN 1933. ESTABLISHED THE SOUTH QUARTER CORNER ON LINE WITH THE CUT LIMESTONE AND THE NW CORNER OF SECTION 2. DID NOT MONUMENT BECAUSE STH 11 WILL BE RECONSTRUCTED WITHIN THE NEXT TWO YEARS.

(C) Was the corner restored through acceptance of (1) an obliterated evidence location or (2) a found perpetuated location?

CORNER WAS RESTORED THROUGH ACCEPTANCE OF OBLITERATED EVIDENCE LOCATION.

(d) Describe any material discrepancy between the location of the corner as restored or reestablished and the location of that corner as previously restored or reestablished by distance and direction. Show the discrepancy on the plan view drawing under (a), above. Show the distances between the corner as previously restored or reestablished and (1) the corner as restored or reestablished, and (2) to at least 4 of the witness monuments shown on the drawing in (a), above.

THE DISCREPANCY IS SHOWN ON THE MAP.



219