

# U.S. PUBLIC LAND SURVEY MONUMENT RECORD

For Public Land Survey Corners In:

WISCONSIN ADMINISTRATIVE CODE A-E 7.08 REQUIREMENT

T. 03 N. R. 11 E. 4th P.M.

CENTER TWP  
ROCK COUNTY WI

CORNER CODE INDEX

A	1	2	3	4	5	6	7	8	9	10	11	12	13	14	15	16	17	18	19	20	21	22	23	24	25	A
B																										B
C																										C
D																										D
E																										E
F																										F
G																										G
H																										H
J																										J
K																										K
L																										L
M																										M
N																										N
O																										O
P																										P
Q																										Q
R																										R
S																										S
T																										T
U																										U
V																										V
W																										W
X																										X
Y																										Y
Z																										Z

IF AVAILABLE  
ROCK COUNTY COORDINATES PREFERRED

North 286479.317 Elev. \_\_\_\_\_

East 440226.614

Hor. Datum \_\_\_\_\_ Vert. Datum \_\_\_\_\_

LATITUDE \_\_\_\_\_

LONGITUDE \_\_\_\_\_

ELLIPS. HT. \_\_\_\_\_

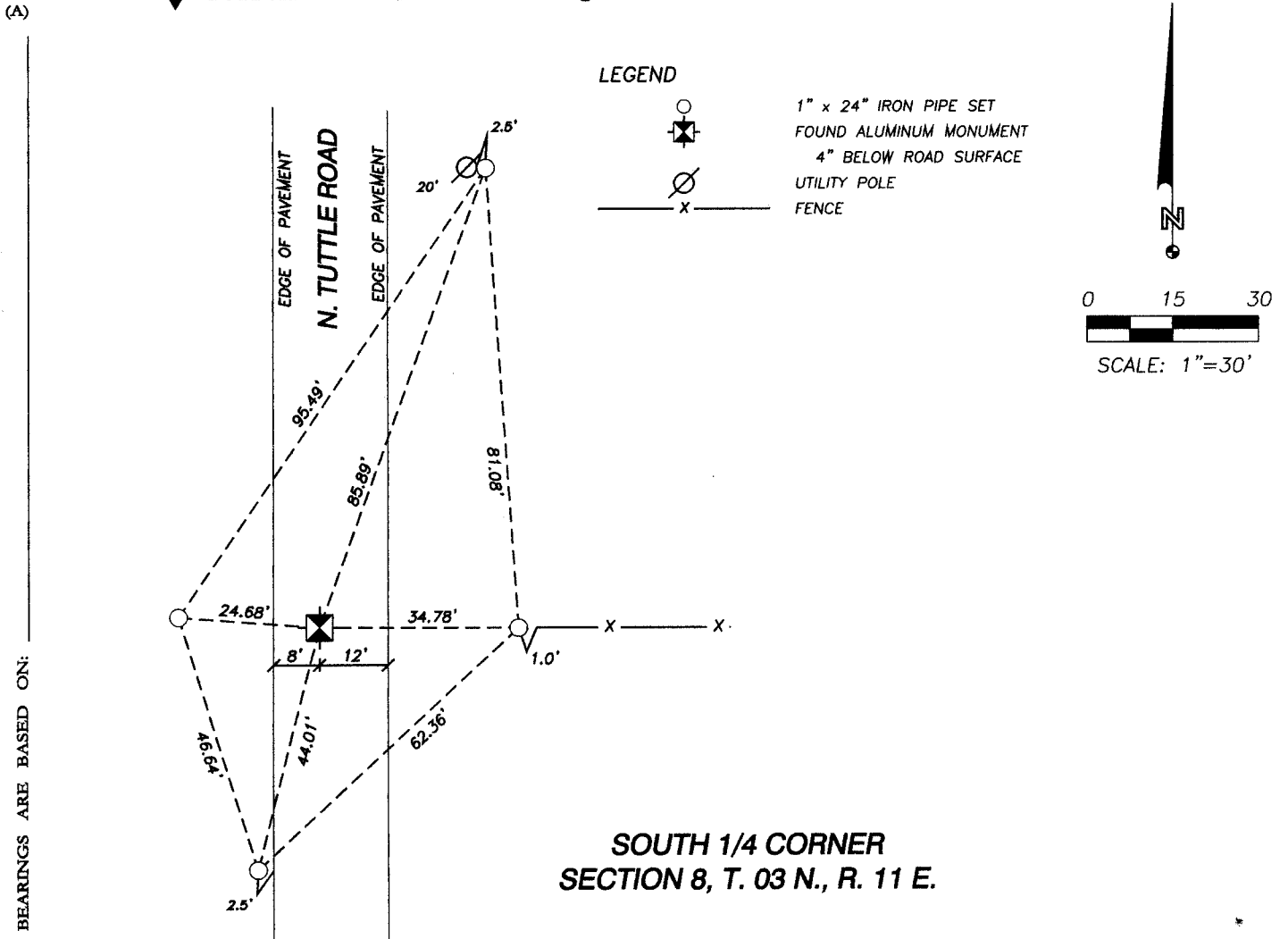
NAD83(91) \_\_\_\_\_ NETWORK ADJ. YR 2010

GPS (X) \_\_\_\_\_ TRAVERSE (X) \_\_\_\_\_

BASED ON THE FOLLOWING CONTROL:

PLACE MONUMENT SYMBOL AT PROPER  
LOCATION ON ABOVE INDEX

◆ CORNER MONUMENT      ○ WITNESS MONUMENT



FIELD BOOK 1 PAGE # 54

SHEET 1 OF 1

SHOW A PLAN VIEW DRAWING DEPICTING THE CORNER MONUMENT AND SURROUNDING PHYSICAL FEATURES, INCLUDING THE EXCAVATION AREA AND DEPTH.

CORNER CODE 544CE

J-7

**(B) Describe any record evidence, monument evidence, occupational evidence, testimonial evidence or any other material evidence you considered, and whether the monument was found or placed.**

I found an aluminum monument 4 inches below the surface of North Tuttle Road approximately 36 feet West of and in line with an occupation fence running East and in line with fence remnants running West.

This monument was apparently set either above a stone monument found and shown on Tie Sheet by Rock County Surveyor Donald Barnes, S-1216, dated August 14, 1979, or to replace same. No record is available regarding the placement of this monument.

**(C) Was the corner restored through acceptance of (1) an obliterated evidence location, or, (2) a found perpetuated location?**

Found perpetuated location.

**(D) Describe any material discrepancy between the location of the corner as restored or reestablished and the location of that corner as previously restored or reestablished by distance and direction. Show the discrepancy on the plan view drawing under (A) above. Show the distances between the corner as previously restored or reestablished and (1) the corner as restored or reestablished, and (2) to at least 4 of the witness monuments shown on the drawing in (A), above.**

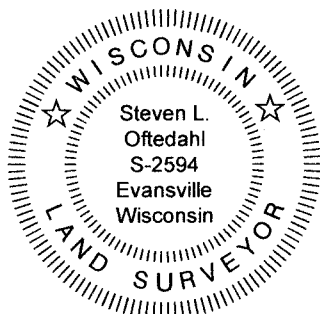
I shot a direct distance of 5306.59 feet from this monument to an aluminum monument found marking the North 1/4 Corner of this Section. Based on coordinate values available from the Rock County Surveyors' office, this distance is recorded as 5306.44 feet.

I accepted the monument location and set 4 witness monuments as shown.

**(E) Was the corner reestablished through lost corner proportionate methods? If so, show the method, including the directions and distance to other public land survey corners used as evidence or used for proportioning the corner location.**

No.

I, Steven L. Oftedahl, hereby certify that the corner location as defined by the corner code index was determined by me under my direction and control and that this U.S. Public Land Survey Monument Record is correct and complete to the best of my knowledge and belief.



Steven L. Oftedahl January 18, 2011

SHEET 1 OF 1

CORNER CODE 544CE

J-7