

PUBLIC LAND SURVEY MONUMENT RECORD

For Public Land Survey Corners in the

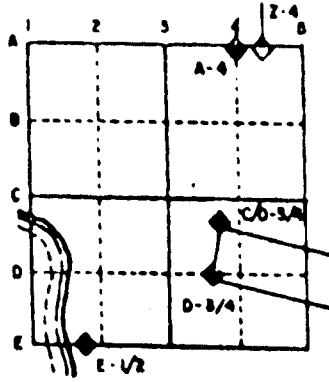
T. 3 N., R. 11 E.

CORNER CODE INDEX

	1	2	3	4	5	6	7	8	9	10	11	12	13	14	15	16	17	18	19	20	21	22	23	24	25
A																									
B	6																								
C		5																							
D			4																						
E				3																					
F					2																				
G	7																								
H		6																							
I			5																						
J				4																					
K					3																				
L	8																								
M		7																							
N			6																						
O				5																					
P	9																								
Q		8																							
R			7																						
S				6																					
T	10																								
U		9																							
V			8																						
W				7																					
X					6																				
Y						5																			
Z							4																		

PLACE MONUMENT SYMBOL (●) AT PROPER LOCATION ON ABOVE INDEX

EXAMPLE



CENTER TWP
ROCK COUNTY WI

IF AVAILABLE
STATE PLANE COORDINATES

North (Y) _____ Eleve. (Z) _____
 East (X) _____ Zone _____
 Hor. Datum _____ Vert. Datum _____

◆ CORNER MONUMENT

○ WITNESS MONUMENT

BEARINGS ARE BASED ON:

(B) Describe any record evidence, monument evidence, occupational evidence, testimonial evidence or any other material evidence you considered, and whether the monument was found or placed.

- 1833 SEP 11th ORIGINAL SURVEYOR NORTH ON EAST SIDE SECTION 1 MAGNOLIA TWP. 5280 INTERSECTED SOUTH BOUNDARY OF T4 AS RUN OUT FROM SUGAR CREEK SET POST FOR CORNER TO TOWNSHIPS 3 & 4 NORTH, RAND 9 EAST IN PRAIRIE AND MADE A MOUND .
- 1833 SEP 15th ORIGINAL SURVEYOR WEST ON SOUTH LINE SECTION 31 PORTER TWP. 7756.32' INTERSECTED RANGE LINE 118.8' SOUTH OF TEMPORARY POST. SET POST AT INTERSECTION CORNERS TOWNSHIPS 3 & 4 N RANGES 10 & 11 E AND MADE A MOUND 4 FEET SQUARE AT BASE AND 4 FEET HIGH.
- 1835 US PLAT MAP SHOWS A COMMON CORNER AND A DISTANCE OF 2560.8' TO THE E 1/4 CORNER OF SECTION 1 MAGNOLIA TWP AND 2338.38 TO COMPUTED POSITION OF THE W 1/4 CORNER OF SECTION 6 CENTER TWP.
- 1855 CHURCH VOL 1 PG 47 DID NOT STATE WHAT HE FOUND. CALLS FOR (18.87 1/5 + 19.87 1/2 CH) 2557.5' BUT SHOULD PROBABLY BE 2623.5 TO S 1/4 CORNER OF SEC 36 UNION TWP & 2529.12 TO E 1/4 CORNER OF SECTION 1 MAGNOLIA TWP.
- 1870 RUGER REMONUMENTATION NOTES EAST ON SOUTH LINE OF SE 1/4 SEC 36 ON A VAR 6-10 OFFSET SOUTH 3 LKS (1.98') AT 39.775 CHS (2625.15') INTERSECTED EAST BOUNDARY LINE 10 LKS (6.6') SOUTH OF CORNER FOUND STAKE SET BY LOCKE AT CORNER. COR VAR 6-16. NORTH ON EAST LINE OF SE 1/4 SEC 36 ON A VAR 7-21 OFFSET WEST 8 LKS (5.28') AT 40.19 CHS (2652.54') INTERSECTED QUARTER LINE 1 LK (.66') WEST OF QUARTER CORNER. FOUND STAKE SURROUNDED BY HARD HEAD STONES SET BY LOCKE AT CORNER,. ALSO FOUND REMAINS OF STUMPS OF BEARING TREES. COR VAR 7-28. PLACED CUT LIMESTONE AT CORNER.
- 1874 RUGER VOL 2 PG 165 FOUND STONE MONUMENT. 2602.16' TO S 1/4 CORNER OF SECTION 31 PORTER TWP, 2660.79' TO W 1/4 CORNER OF SECTION 31 PORTER TWP. CALLS FOR THE W 1/4 CORNER TO BE 11.22' NORTH OF THE E 1/4 CORNER OF SECTION 36 UNION TWP. W 1/4 CORNER OF SECTION 31 IS MIDWAY BETWEEN THE NW & SW CORNERS OF SECTION 31.
- 1876 RUGER VOL 2 PG 219 FOUND STONE MONUMENT CALLS FOR 2333.43' TO THE W 1/4 CORNER OF SECTION 6 CENTER TWP.
- 1900 BROWN VOL 2 PG 520 FOUND MONUMENT. 2614.92' TO N 1/4 CORNER OF SECTION 6 CENTER TWP. 2337.72' TO W 1/4 CORNER OF SECTION 6.
- 191? KERCH VOL 3 PG 15 FOUND MONUMENT BROKEN DROVE 1/2" RAKE TOOTH UNDER BASE & RESET PORTION OF MONUMENT IN ORIGINAL PLACE. 2596.1 TO N 1/4 CORNER (GAS PIPE) OF SECTION 6 CENTER TWP.
- 1911 TOWN ROAD RECORD FOR WEARY ROAD. COMMENCING AT THE FOUR CORNERS OF THE TOWNS OF UNION, MAGNOLIA, PORTER, AND CENTER; THENCE RUNNING EST ALONG THE SOUTH SIDE OF THE DRAINAGE DITCH BETWEEN THE TOWNS OF PORTER AND CENTER, UNTIL IT INTERSECTS A HIGHWAY RUNNING NORTH AND SOUTH ON THE HALF SECTION LINE OF SECTION SIX OF THE TOWN OF CENTER,

CORNER IS IN DEEP & WIDE IRRIGATION DITCH. MONUMENT WAS DESTROYED. DID NOT REPLACE MONUMENT.

C) Was the corner restored through acceptance of (1) an obliterated evidence location, or, (2) a found perpetuated location?
RESTORED CORNER THROUGH ACCEPTANCE OF OBLITERATED EVIDENCE LOCATION. USED LOCKE'S 1867 DISTANCES AROUND SECTION 36. THIS IS IN HARMONY WITH THE N/S FENCE AT THE SE CORNER OF SECTION 36. THIS IS ALSO IN HARMONY WITH THE RECORD DISTANCES TO THE W 1/4 CORNER OF SECTION 6 CENTER TWP AND THE FENCE INTERSECTION THERE. LOCKE (1867) CALLS FOR THE S 1/4 CORNER OF SECTION 36 TO BE ON LINE WITH THE SW AND SE CORNERS. RUGERS 1870 REMONUMENTATION NOTES CALL FOR THE CORNER TO BE OFF LINE. THE ESTABLISHED S 1/4 CORNER OF SECTION 36 IS 4.8' OFF LINE. THE FOLLOWING ARE THE DIFFERENCES IN VARANCE IN BEARINGS BETWEEN THE SW TO THE S1/4 CORNER AND THE S 1/4 CORNER TO THE SE CORNERS OF SECTION 36:

LOCKE 0-0
RUGER 0-23'
NEW BEARINGS 0-15'

10F 3

Donald Barnes
Sep 12, 1994

A 1

D) Describe any material discrepancy between the location of the corner as restored or reestablished and the location of that corner as previously restored or reestablished by distance and direction. Show the discrepancy on the plan view drawing under (a), above. Show the distances between the corner as previously restored or reestablished and (1) the corner as restored or reestablished, and (2) to at least 4 of the witness monuments shown on the drawing in (a), above.

(E) Was the corner reestablished through lost corner proportionate methods? If so, show the method, including the directions and distances to other public land survey corners used as evidence or used for proportioning the corner location.

NO

I, Donald Barnes, hereby certify that the corner points as identified by the corner code index were, in a field survey on, SEP 9, 1994, established, re-established, monumented, re-monumented, recovered or restored as expressed below and in conformance with the regulations and rules as required in the current manual of survey instructions of the United States Department of Interior, Bureau of Land Management.

seal
Donald Barnes
Sep 12, 1994

AFFIX YOUR LAND SURVEYOR SEAL

COUNTY SURVEYOR FILING DATA

Date of computer entry _____

Date microfilmed _____

Number of included sheets _____
CORNER CODE

20F3

A1

A

SECTION LINE

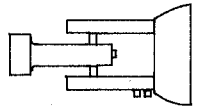
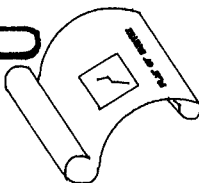
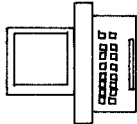
C K COUNTY

O R

S U R V E Y

O R

E Y



Donald Banes
Sep 12, 1994

NE COR SEC 1 T3N R10E
NW COR SEC 6 T3N R11E
SW COR SEC 31 T4N R11E
SE COR SEC 36 T4N R10E

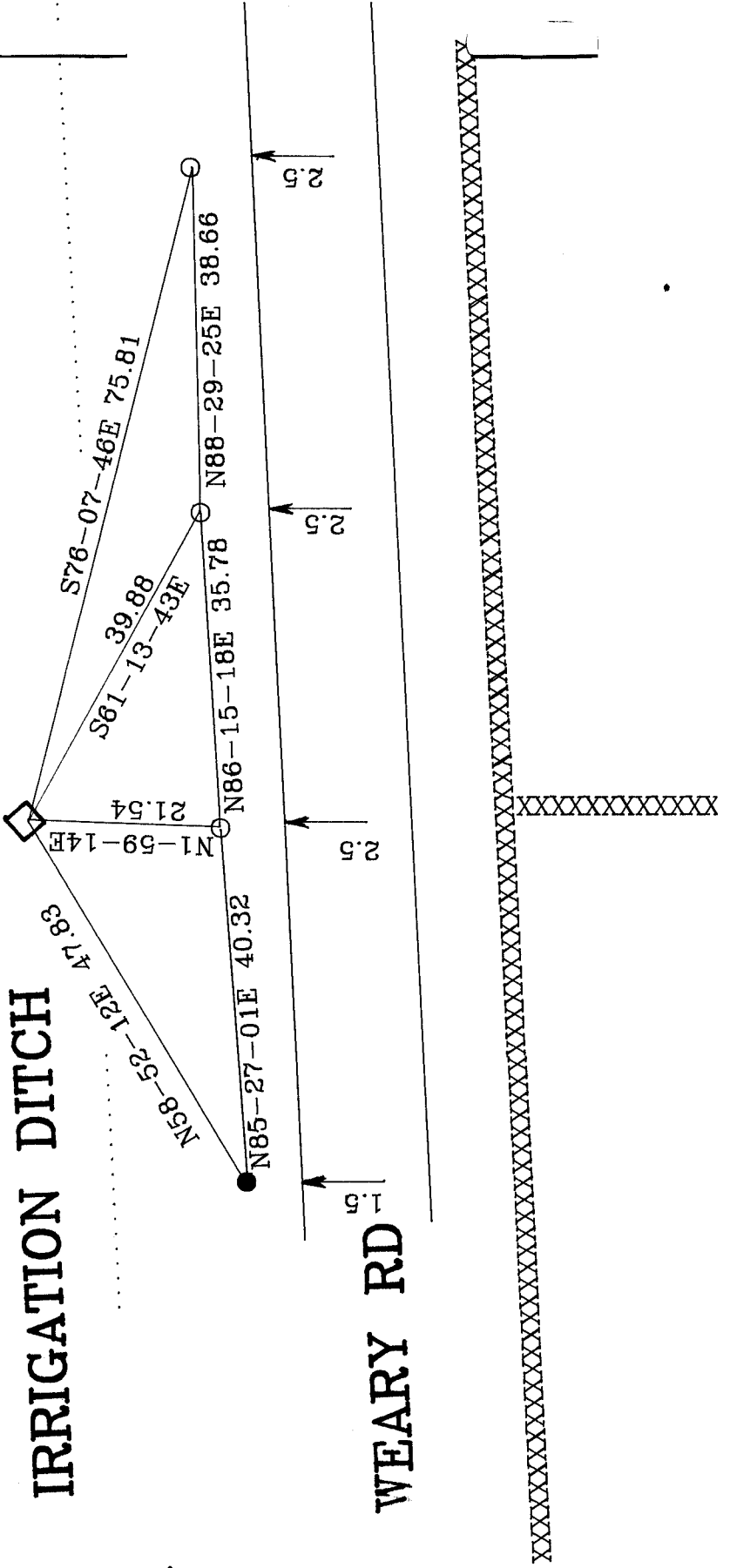
● 3/4X24 REROD
WITH PLASTIC CAP

○ 3/4X24 REROD

◇ DID NOT INSTALL MONUMENT

MAG FB #4 PG 31,40

IRRIGATION DITCH



WEARY RD

0 VOL. 6 PLAT AND RECORD

Survey on Section 36 4 N. 10 E. of the 4 P. M. in T 3 N. R. 10 W. Township

County, Wisconsin, made

I hereby certify that the following is a correct record of said survey as made by me.

County Surveyor.

LOCKE PRO 2618.27
 S89-47-28E 2618.51 VAR 7-00
 LOCKE 1867 2612.29 VAR 6-39
 BARNES 1860 2619.50
 ORIG 2602.05
 LOCKE PRO 2652.66
 NO-12-30W 2652.27
 LOCKE 1867 2648.50 VAR 7-35

LOCKE PRO 2611.32
 S89-45-10E 2618.46
 LOCKE 1867 2605.35 VAR 7-00
 LOCKE PRO 2656.63
 SO-09-48E 2653.02
 LOCKE 1867 2647.92 VAR 7-40
 RUGER 1870 2651.88 VAR 7-11

LOCKE PRO 2627.19
 RUGER 1870 2625.15 VAR 6-16
 LOCKE 1867 2621.19 VAR 6-65
 S89-51-41E 2627.19
 LOCKE PRO 2654.24
 SO-12-30E 2681.50
 LOCKE 1867 2648.18 VAR 7-35

CHURCH 1855 2491.50
 ORIG PLAT 0'
 ORIG FIELD NOTES 0'
 NO-01-38E 2413.68
 CHURCH 1855 2409.0 VAR 7-45'
 1320 CHURCH 1855 1089.0
 NO-27-12W 2562.24
 ORIG FIELD NOTES 2840 TO TEMP. POST
 CHURCH 1855 2529.12
 ORIG PLAT 2560.8
 CHURCH 1855 1240.8
 ORIGINAL SHOULD BE 2521.2 (2840-118.8)

CHURCH 1855 2647.92 VAR 4
 CHURCH 1855 2645.02
 S86-39-16E 2653.11
 INT 1/4 LINES 1323.96
 CHURCH 1855 2647.92 VAR 4
 1323.96 CHURCH 1855 1323.96
 NO-25-22W 2639.17
 BROWN 1900 2640
 RUGER 1876 2633.05
 ORIG PLAT 2640
 NO-25-23W 222.42
 ORIG PLAT 2560.8
 NO-31-38W 222.27
 RUGER 1878 2578.29
 ORIG 2665.42
 BROWN 1900 2588.54
 KERCH 2588.5

6
 36
 1

SEPT
 19

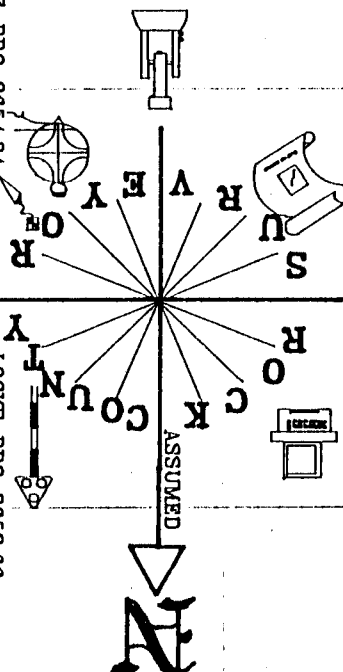
1994

NO-0456W 2850.48 VAR 8-58
 RUGER 1870 2652.54 VAR 8-58
 BARNES 1980 2850.47
 ORIG 2840

NO-11-04E 2855.13 VAR 8-45
 RUGER 1870 2853.2 VAR 8-45
 BARNES 1980 2654.94
 ORIG 2840

NO-35-09E 2279.66
 BARNES 1980 2276.86
 ORIG 2254.58

NO-14-48E 2658.85
 BARNES 1980 2658.81
 1925 BARNES 1979 1330



SEC 6

SEC 36

SEC 1