

U.S. PUBLIC LAND SURVEY MONUMENT RECORD

For Public Land Survey Corners in:

WI ADMINISTRATIVE CODE A-E 7.08 REQUIREMENT

T. 3 N., R. 11 E 4th P.M.

CORNER CODE INDEX

CENTER TWP

ROCK COUNTY, WI

IF AVAILABLE

ROCK COUNTY COORDINATES PREFERRED

1	2	3	4	5	6	7	8	9	10	11	12	13	14	15	16	17	18	19	20	21	22	23	24	25
A	6																							
B		5																						
C			4																					
D				3																				
E					2																			
F						1																		
G	1	8	9	10	11	12																		
H																								
I	18	17	16	15	14	13																		
J																								
K																								
L																								
M																								
N																								
O	19	20	21	22	23	24																		
P																								
Q																								
R																								
S	30	29	28	27	26	25																		
T																								
U																								
V																								
W																								
X																								
Y																								
Z																								

North _____ Elev. _____

East _____

Hor. Datum _____ Vert. Datum _____

LATITUDE _____ ELLIPS. HT. _____

LONGITUDE _____

ELLIPS. DATUM

NAD83(91) _____ COUNTY _____ LIST _____

GPS (X) _____ TRAVERSE (X) _____

BASED ON THE FOLLOWING CONTROL:

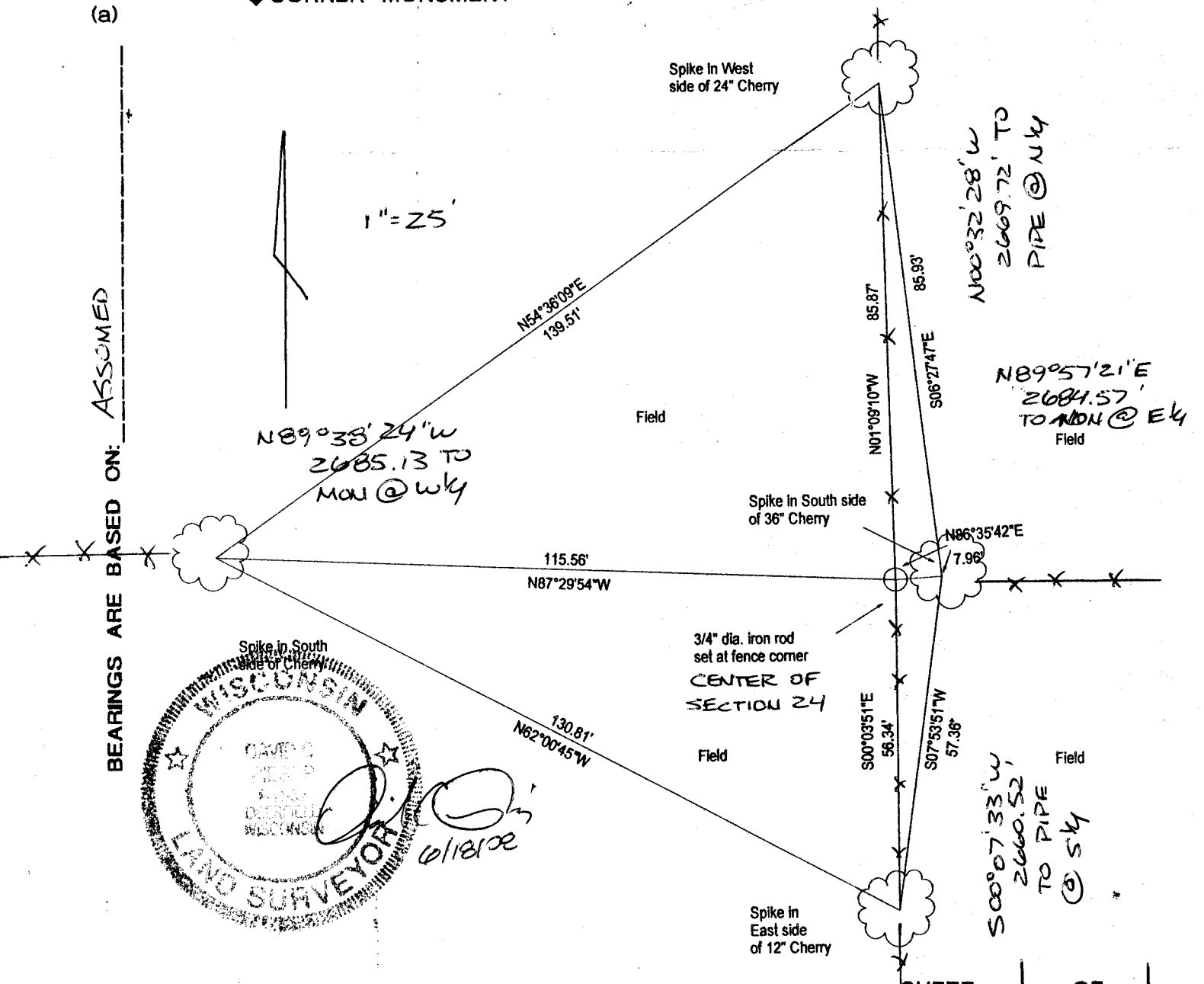
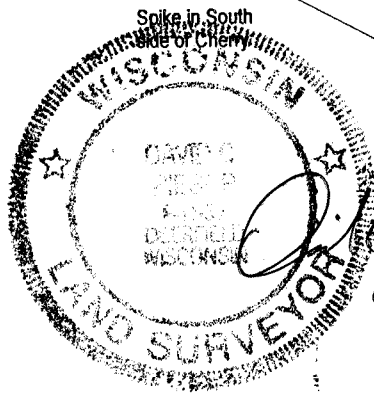
PLACE MONUMENT SYMBOL \blacklozenge AT PROPER LOCATION ON ABOVE INDEX

\blacklozenge CORNER MONUMENT

WITNESS MONUMENT

(a)

BEARINGS ARE BASED ON: ASSUMED



FIELD BOOK _____ PAGE # _____

SHOW A PLAN VIEW DRAWING DEPICTING THE CORNER MONUMENT AND SURROUNDING PHYSICAL FEATURES, INCLUDING THE EXCAVATION AREA AND DEPTH.

PLANNING & ZONING COMMITTEE ADOPTED THE ABOVE FORM ON 12/2/1982

SHEET 1 OF 1

CORNER CODE P-23

B) Describe any record evidence, monument evidence, occupational evidence, testimonial evidence or any other material evidence you considered, and whether the monument was found or placed.

I set a 3/4" dia rod at a very large and old fence corner. I accepted this corner as witness of 1857 survey by Joseph Church, County Survey Record # 768. This location generally fits adjacent occupied fence lines and provides distances to the Church survey to the West and South 1/4 corners. A straight line intersection of the 1/4 lines falls N58°32'34"W, 18.22.

C) Was the corner restored through acceptance of (1) an obliterated evidence location, or, (2) a found perpetuated location?

Accepted Fence Corner

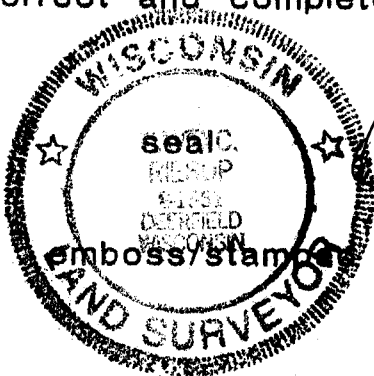
D) Describe any material discrepancy between the location of the Corner as restored or reestablished and the location of that corner as previously restored or reestablished by distance and direction. Show the discrepancy on the plan view drawing under (a), above. Show the distances between the corner as previously restored or reestablished and (1) the corner as restored or reestablished, and (2) to at least 4 of the witness monuments shown on the drawing in (a), above.

NA

E) Was the corner reestablished through lost corner proportionate methods? If so, show the method, including the directions and distances to other public land survey corners used as evidence or used for proportioning the corner location.

NA

I, DAVID RIESOP, hereby certify that the corner location as identified by the corner code index was determined by me under by direction and control and that this U.S. Public Land Survey Monument Record is correct and complete to the best of my knowledge and belief.



David Riesop
6/19/28

Number of included sheets _____

A-E 7.08 REQUIREMENT CORNER CODE P-23