

PLAT AND RECORD

Of a Survey on Section 32 T 3 R 13 E. of the 4 P. M. in HARMONY Township

Rock County, Wisconsin, made MARCH the 21st 1962

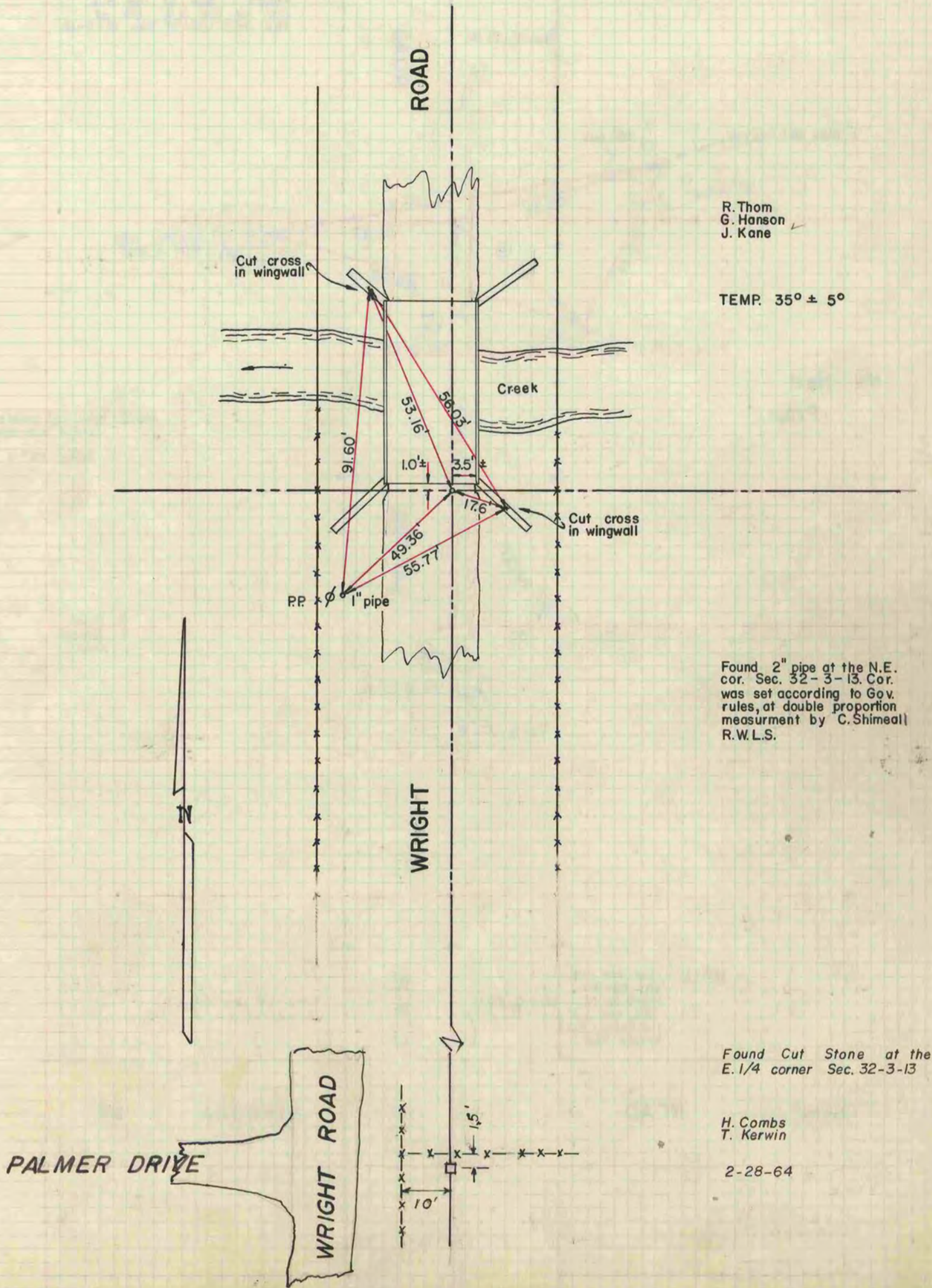
I hereby certify that the following is a correct record of said survey as made by me.

R. B. Bettman

County Surveyor.

COUNTY BUILDING
IN CITY OF БЕЛОИТ

THE GEO. S. BARRARD COMPANY, ST. LOUIS



R. Thom
G. Hanson
J. Kane

TEMP. 35° ± 5°

Found 2" pipe at the N.E. cor. Sec. 32-3-13. Cor. was set according to Gov. rules, at double proportion measurement by C. Shimeall R.W.L.S.

Found Cut Stone at the E. 1/4 corner Sec. 32-3-13

H. Combs
T. Kerwin

2-28-64